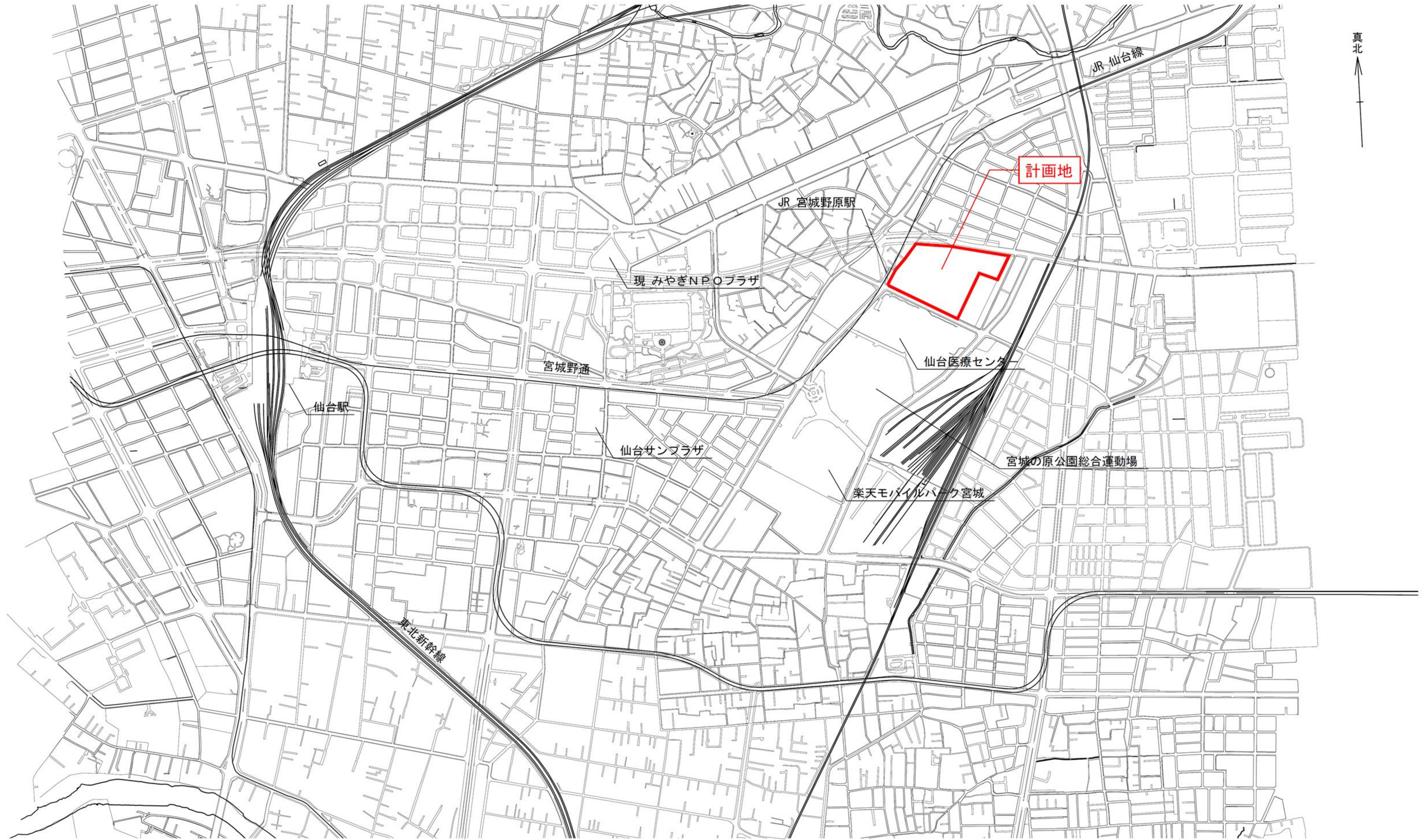
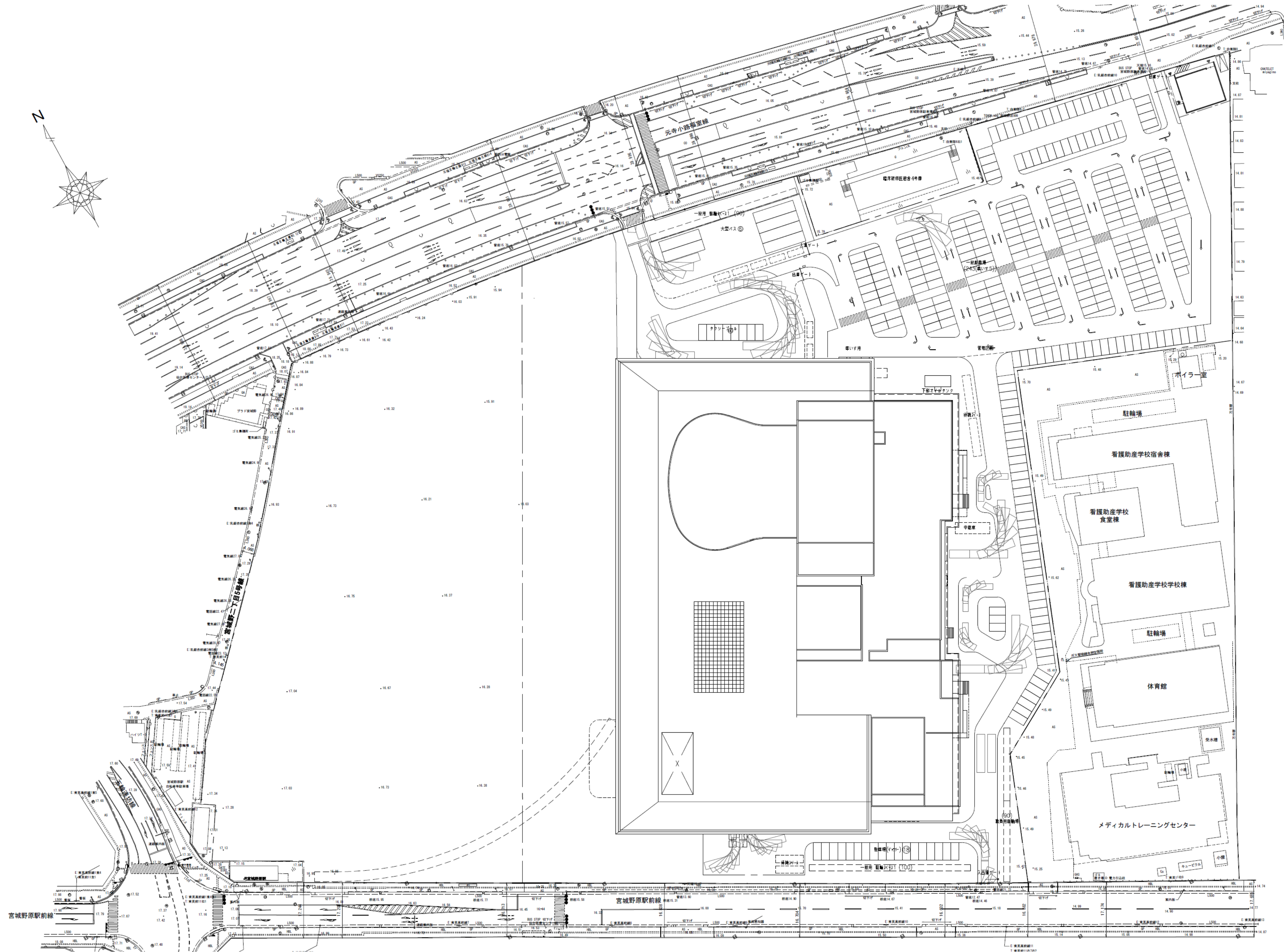


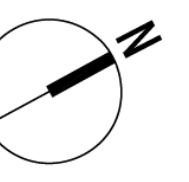
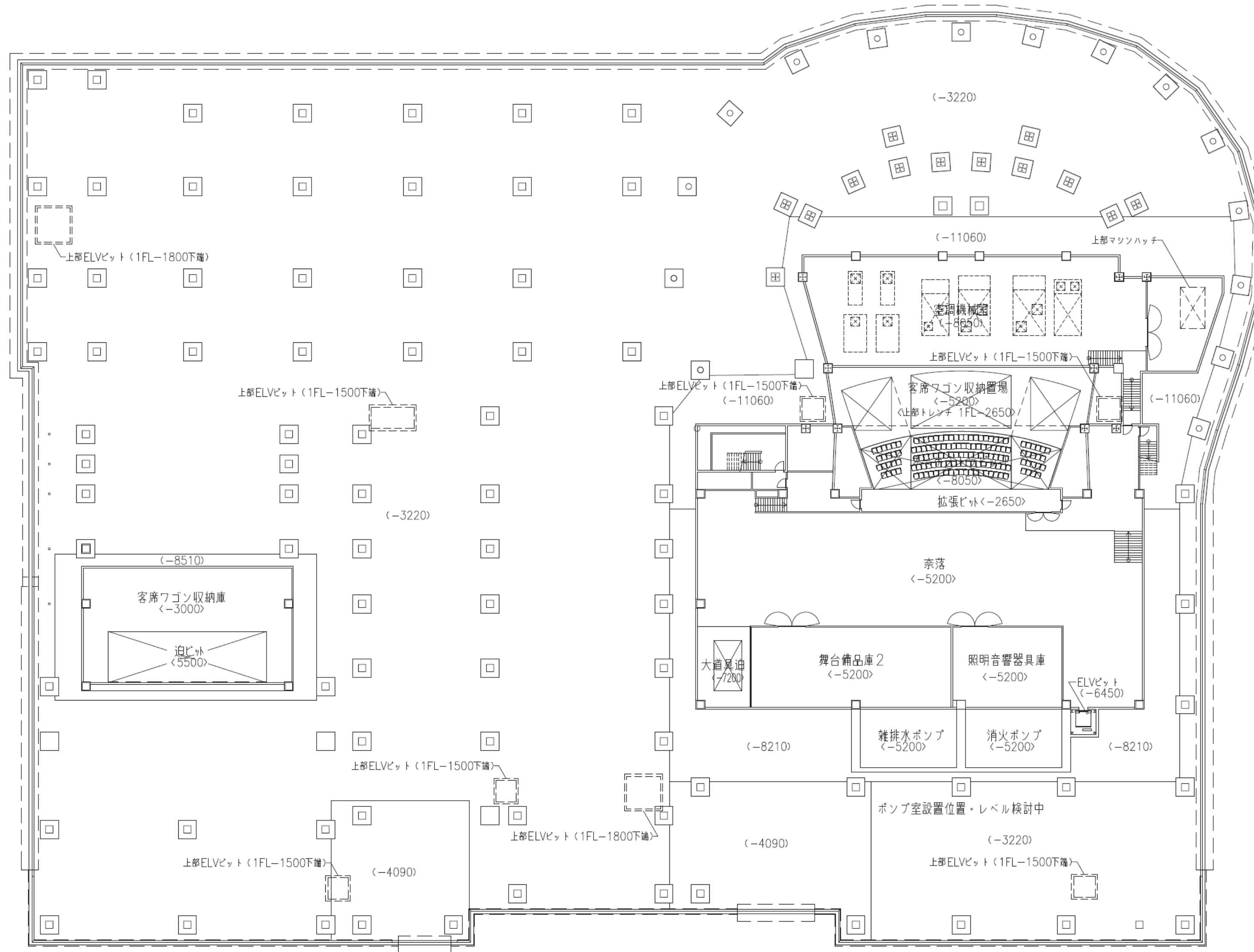
# 位置図



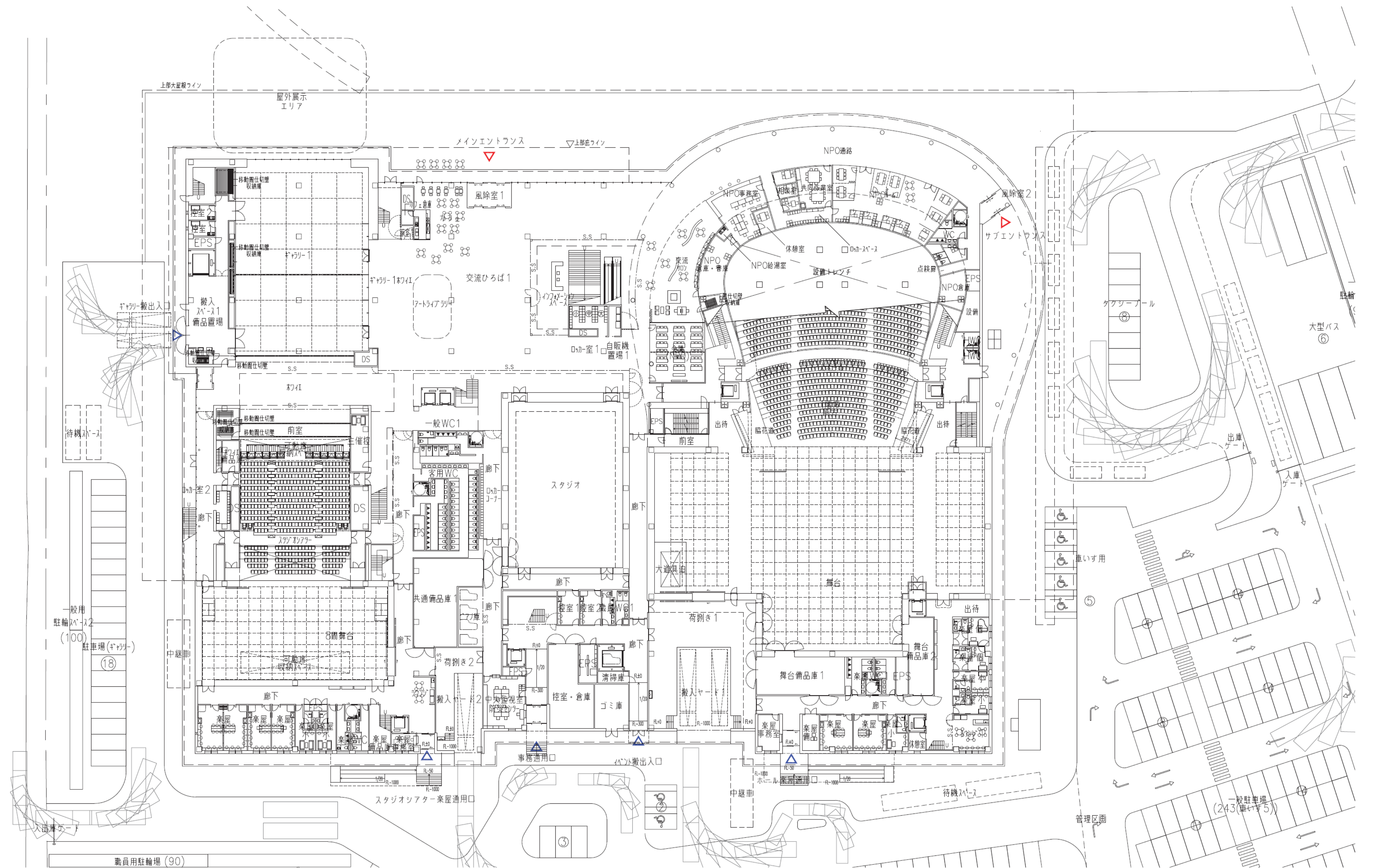
# 配置図



# 地下1階平面図

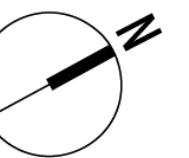
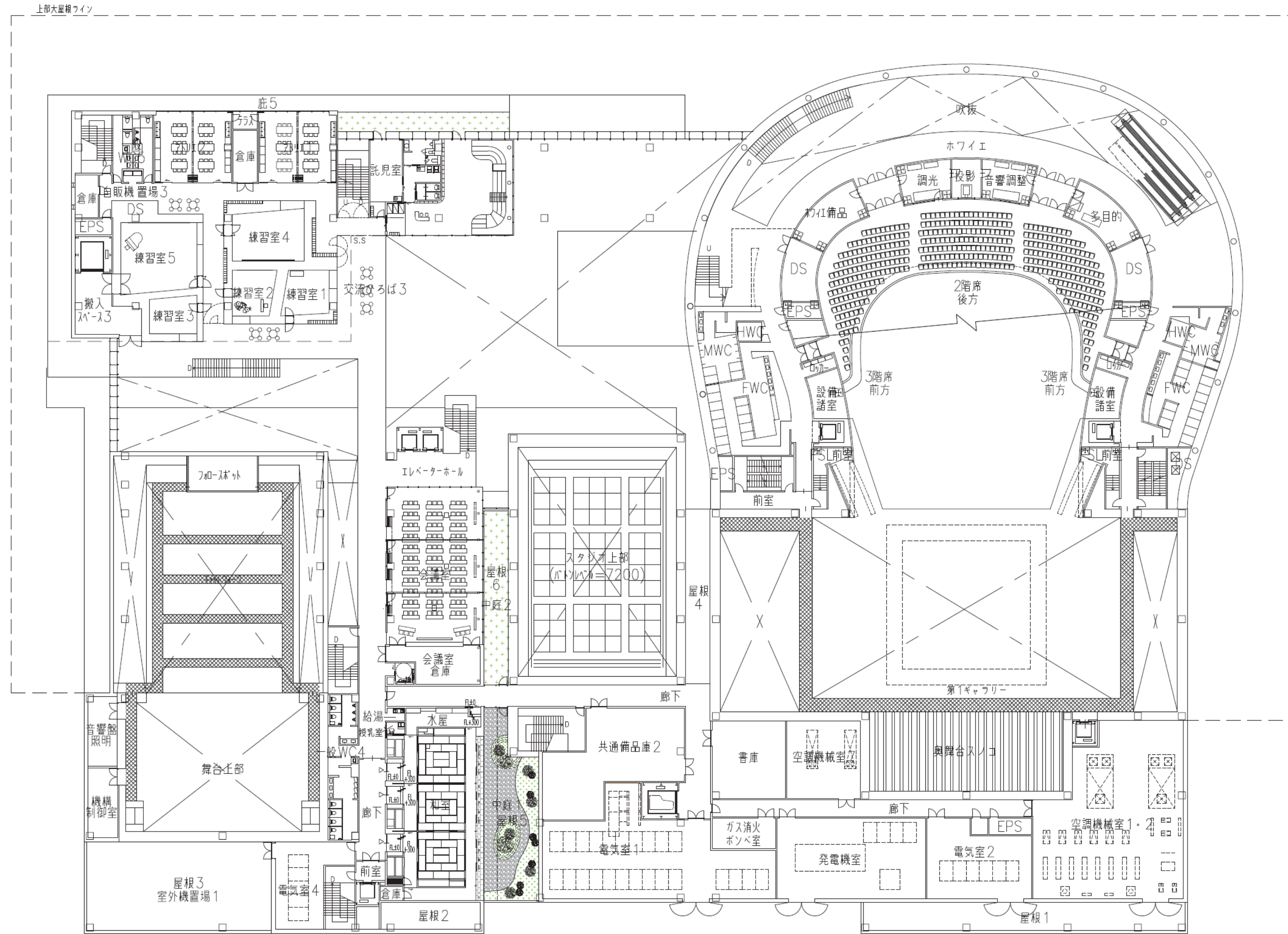


# 1階平面図

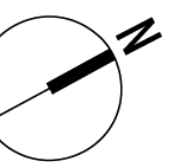
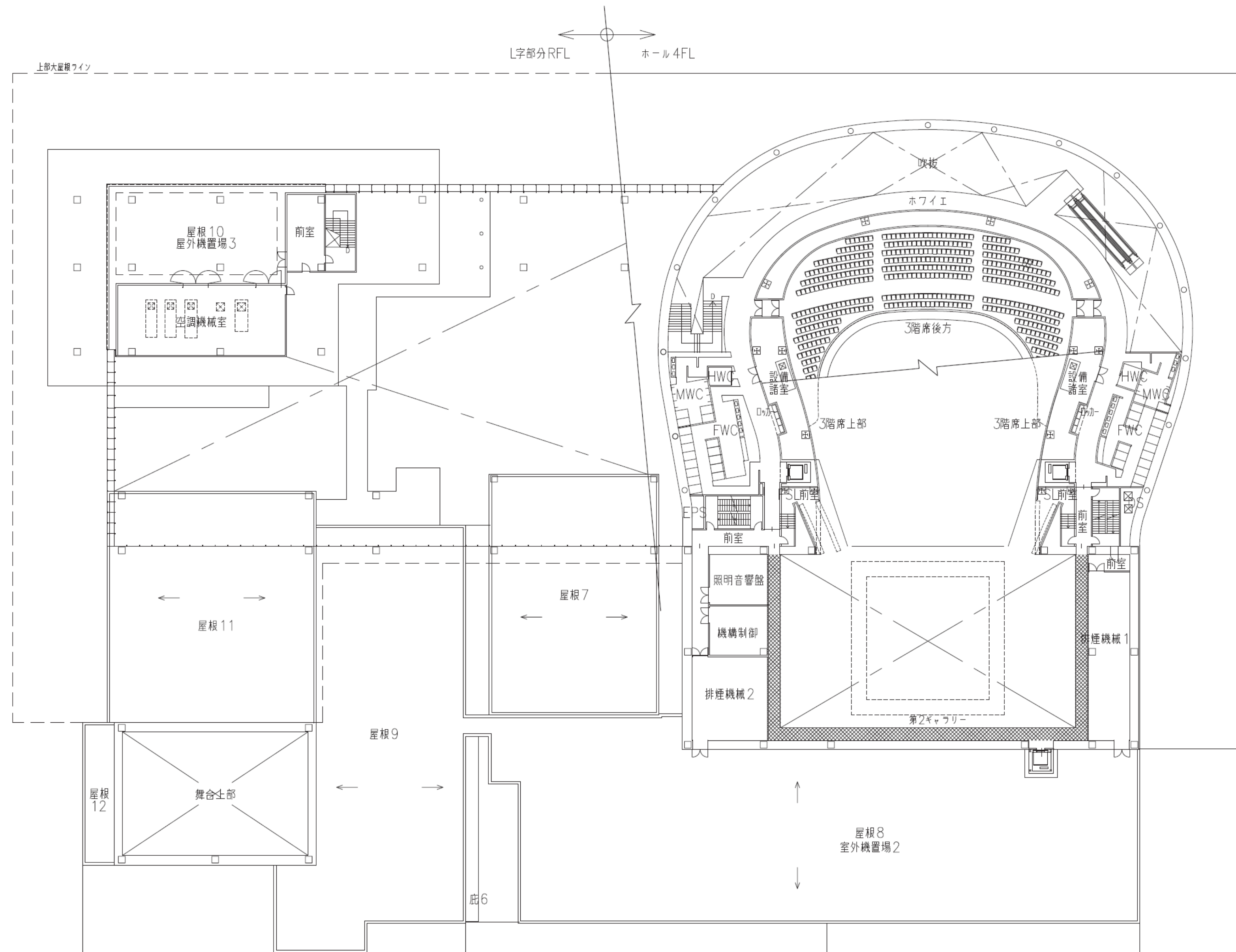




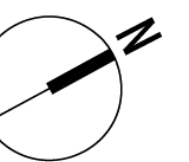
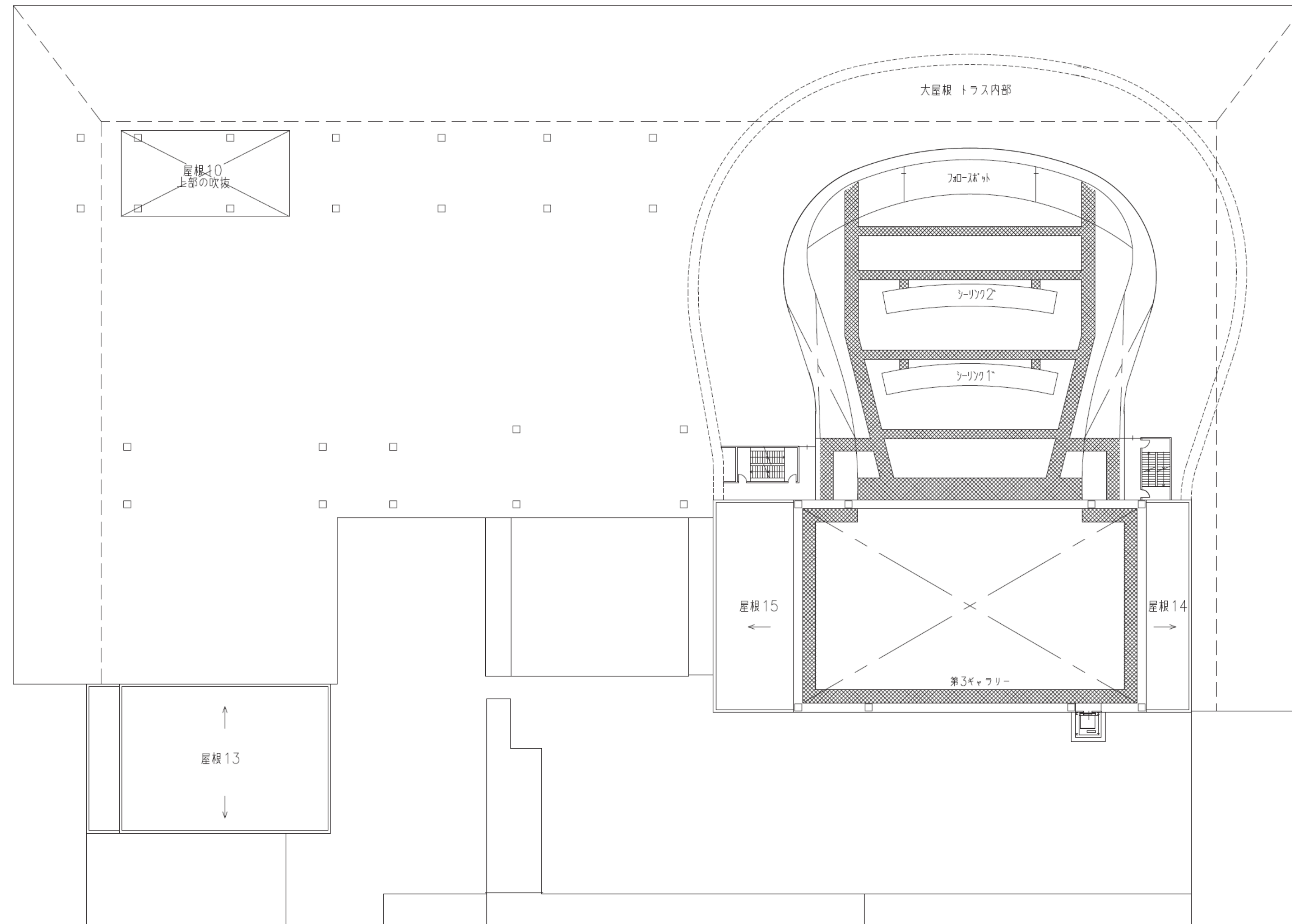
# 3階平面図



# 4階平面図

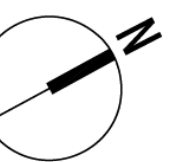
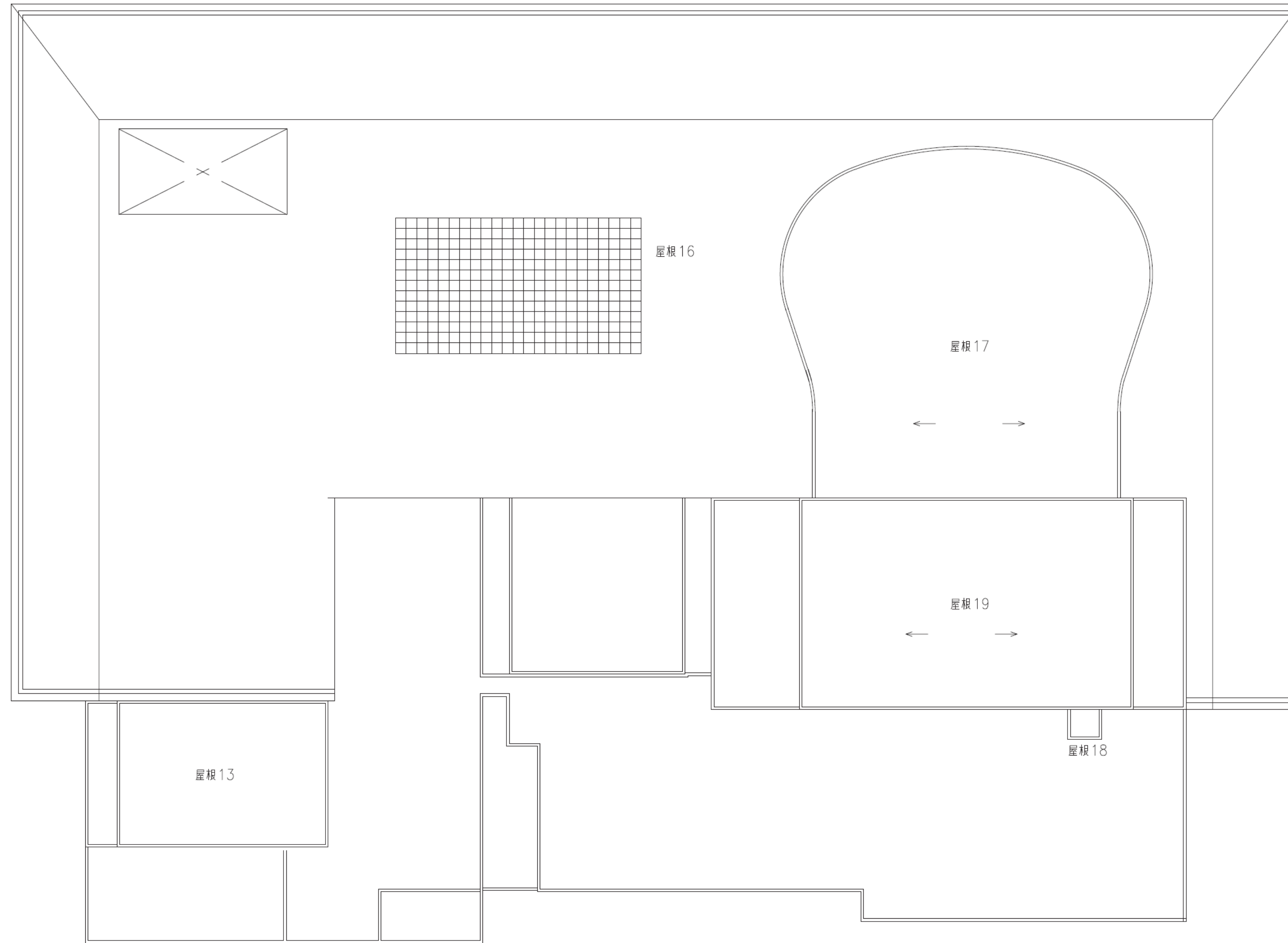


# 5階平面図

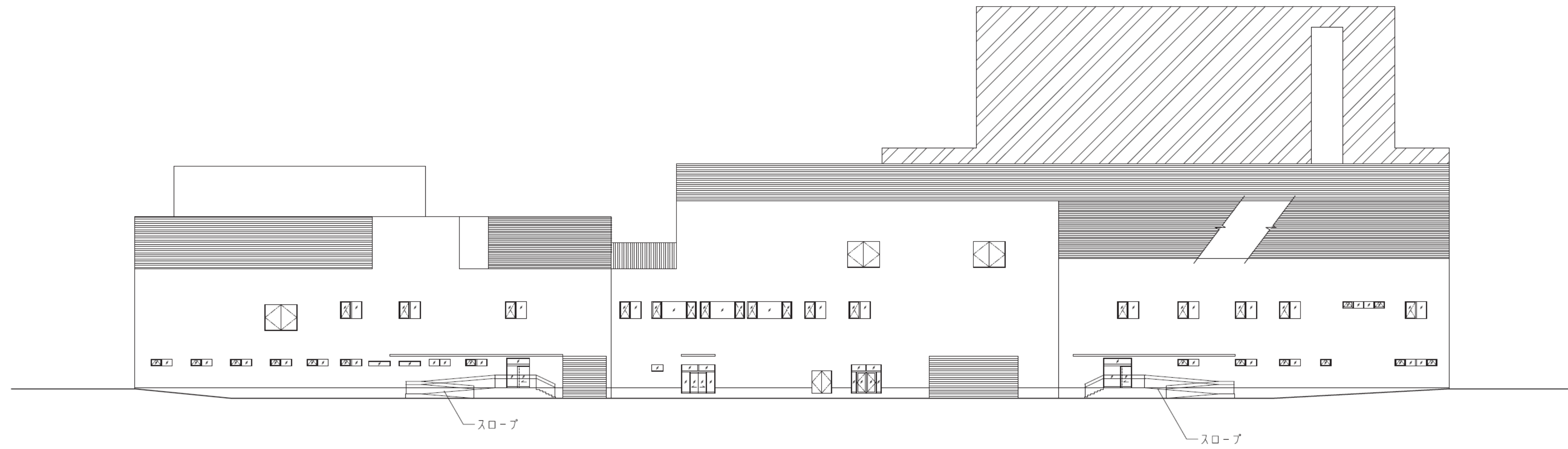




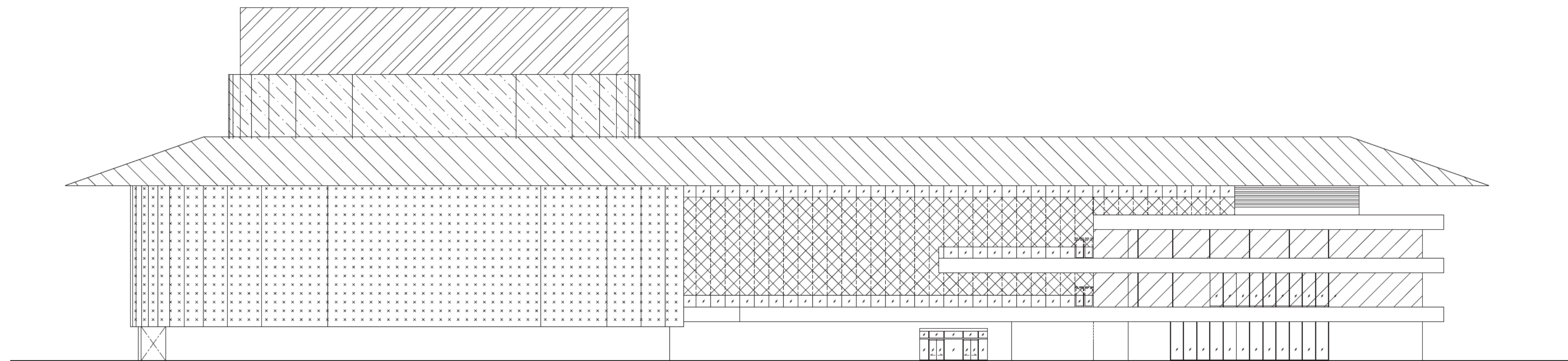
# 屋根伏図



# 立面図

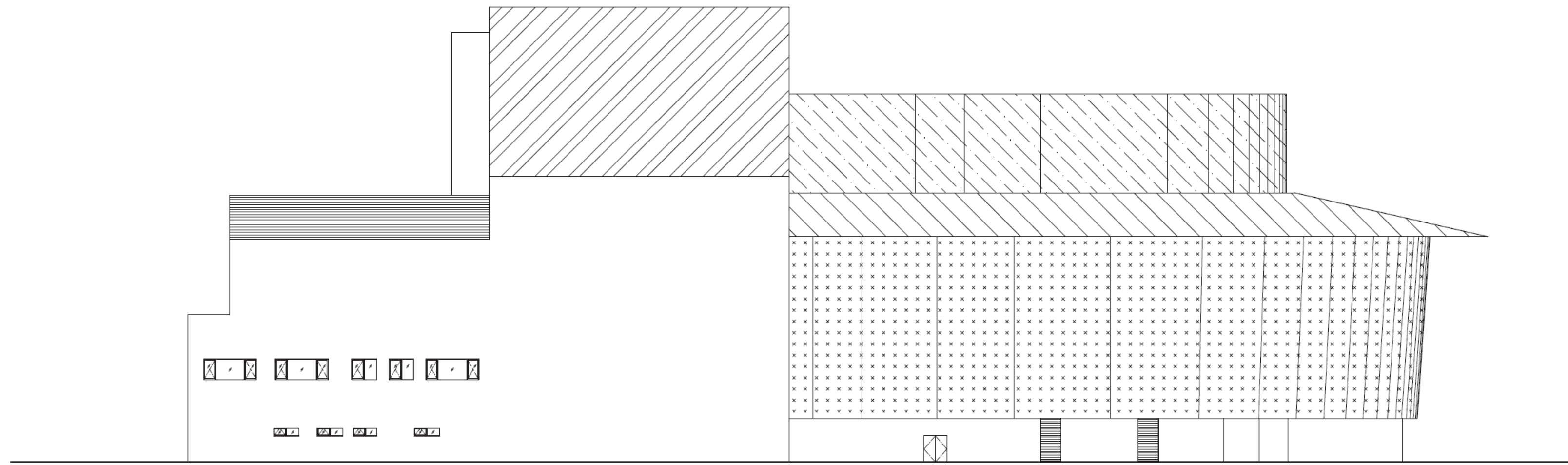


東側立面

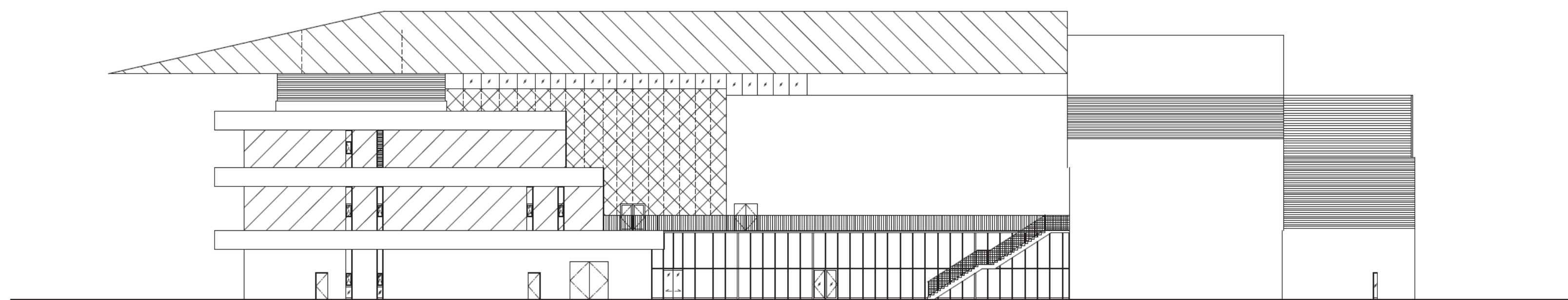


西側立面

# 立面図

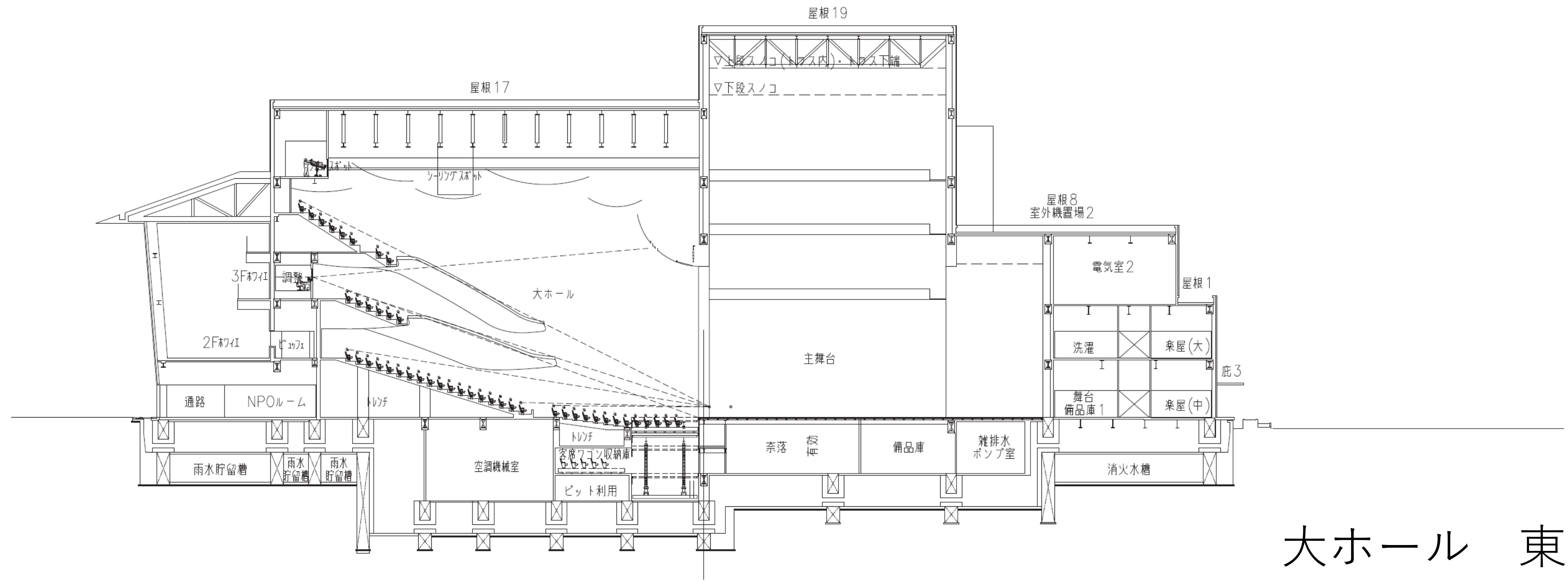


北側立面

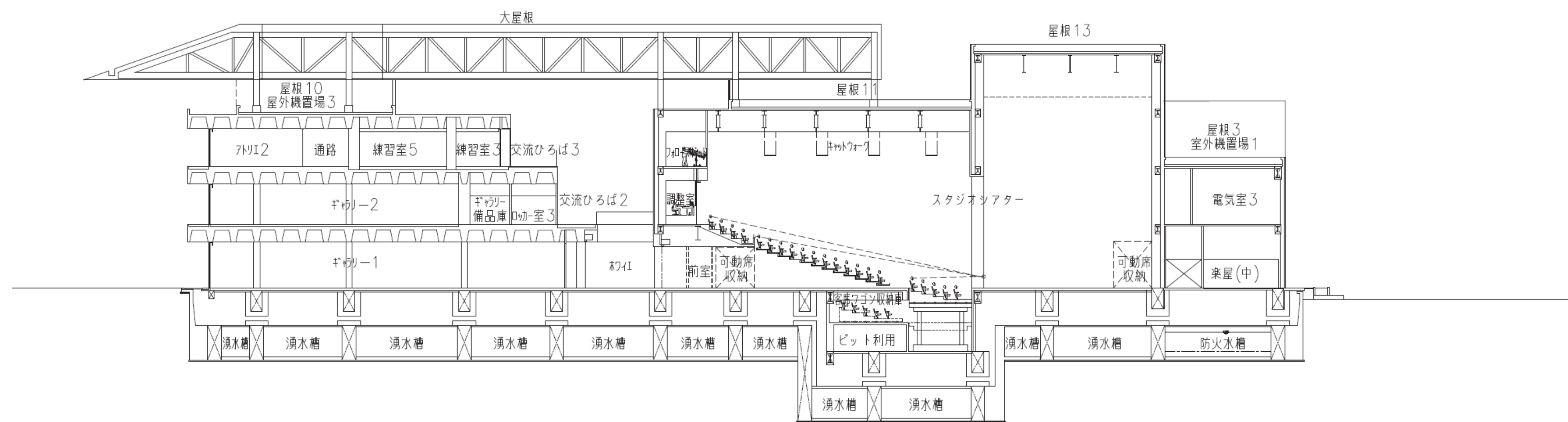


南側立面

# 断面図

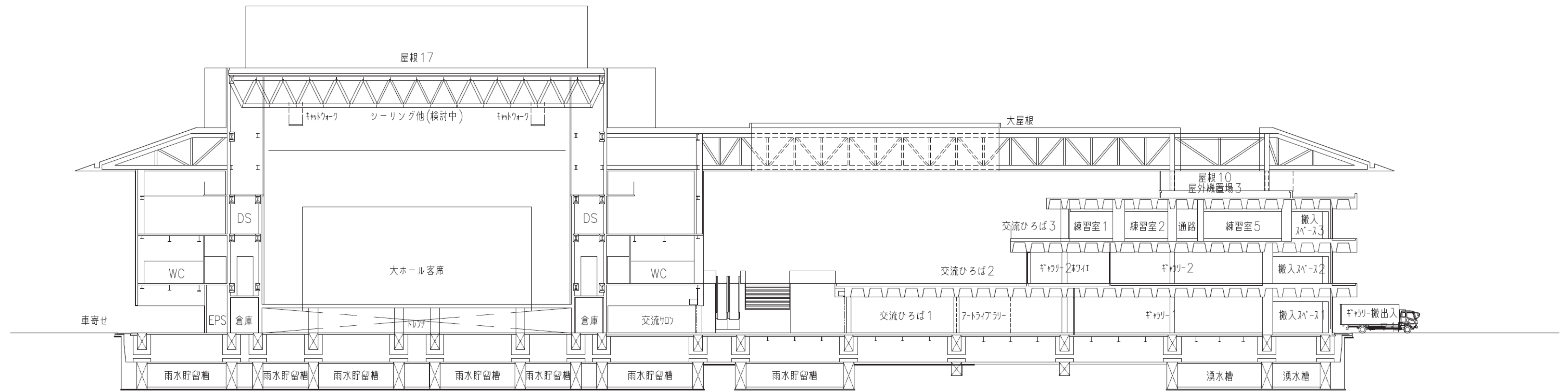


大ホール 東西断面

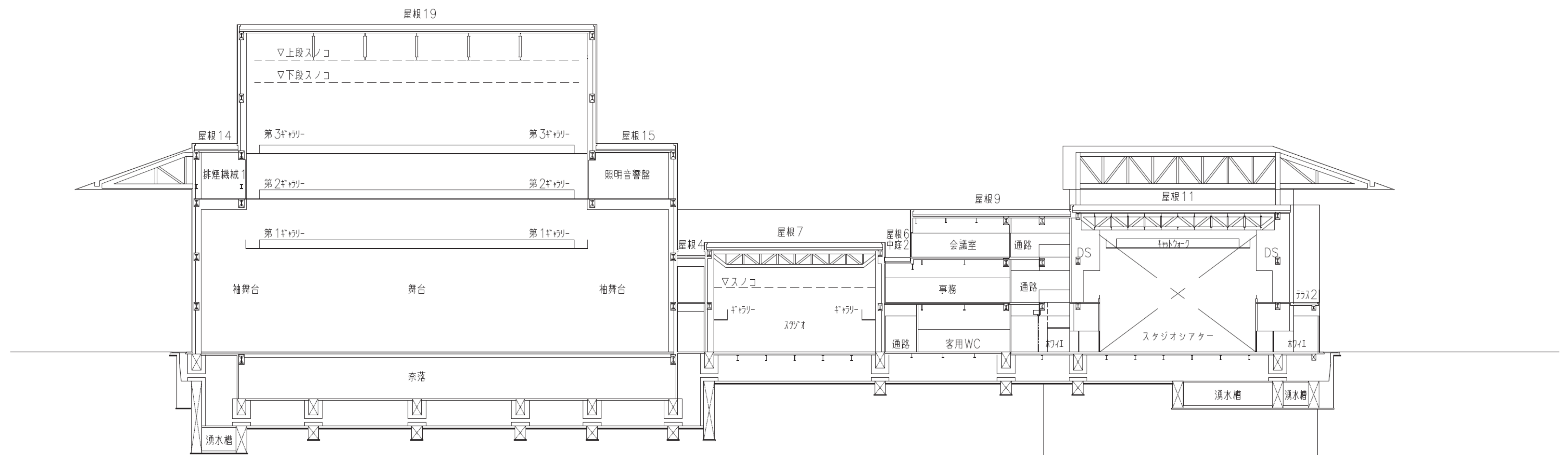


スタジオシアター 東西断面

# 断面図

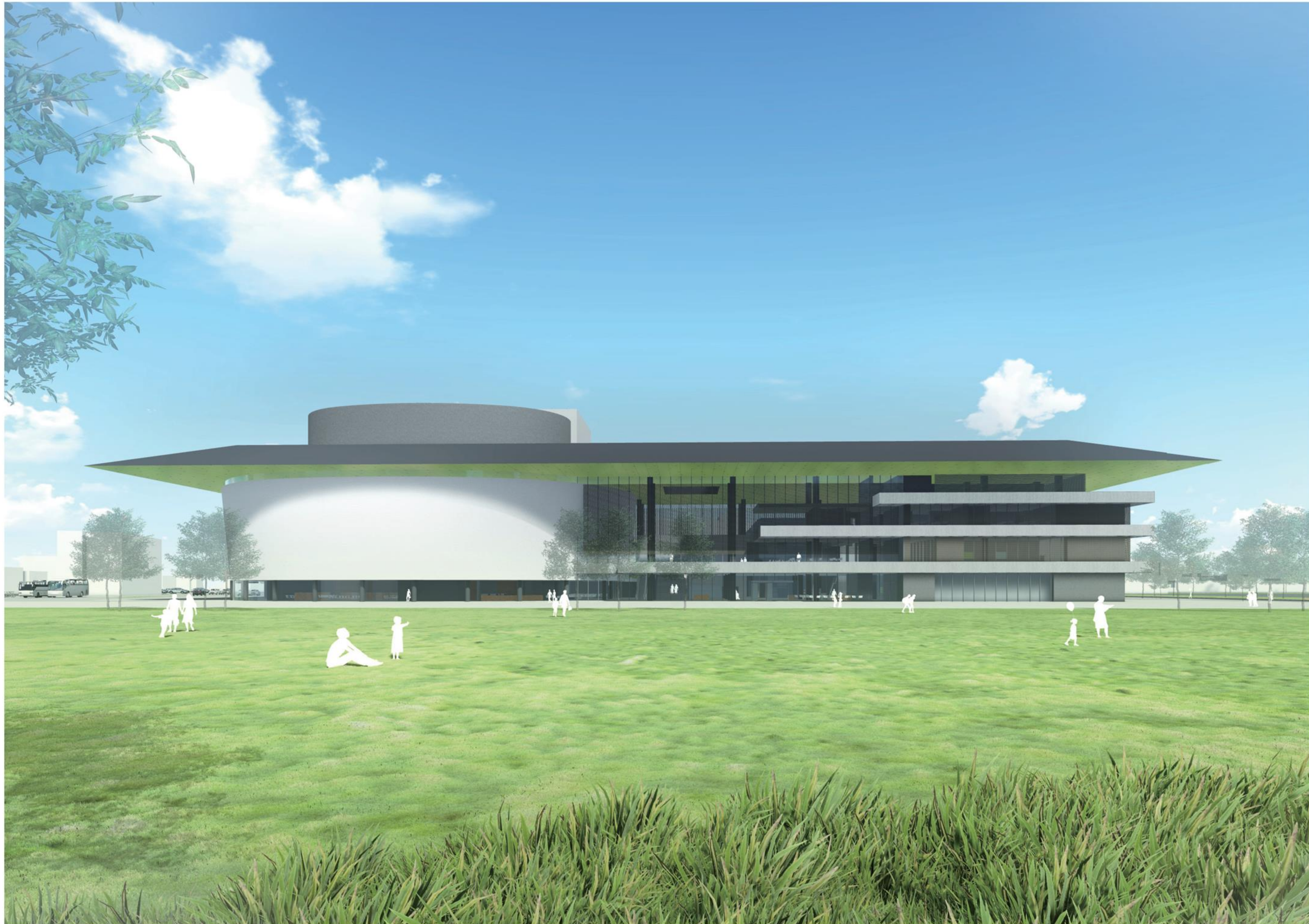


大ホール客席・ギャラリー 南北断面



大ホール舞台・スタジオシアター舞台 南北断面

# 西面外観



# 南西面外観

