

～ Main Wholesale Markets in Miyagi ～

Kesennuma Fish Market, Ishinomaki Fish Market, and Shiogama Fish Market are the main wholesale markets in Miyagi and are considered to be some of the leading markets for fish landings.

In order to maintain markets with advanced sanitation capabilities that meet the safety and security needs of consumers, various efforts to eliminate potential risks such as food poisoning are being implemented.

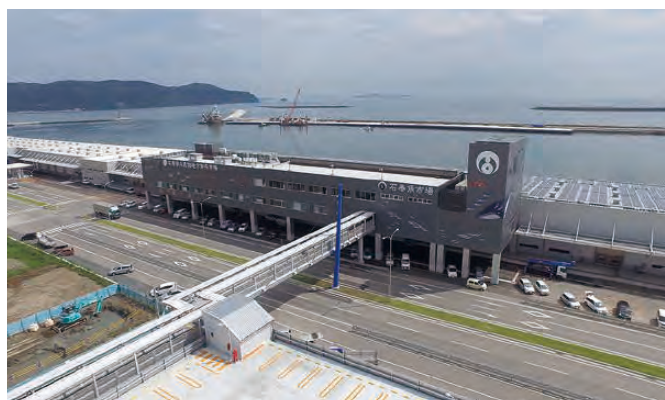
〈Kesennuma Fish Market〉

Located in the northernmost part of the prefecture, Kesennuma Fish Market has one of the largest number of landings in Japan due to the close proximity of the abundant Sanriku fishing ground and Kesennuma Bay, which has calm waters suitable for cultivation. In particular, many types of skipjack, tuna, swordfish, pacific saury, and sharks are caught.



〈Ishinomaki Fish Market〉

Located in the northeastern part of the prefecture, Ishinomaki Fish Market is one of the largest distribution centers in Japan due to close proximity of the Kinkasan fishing grounds, which have the Oyashio and Kuroshio currents, and the rias coastline, which is suitable for cultivation. Over 200 species of marine life are caught, ranging from sardines and mackerels through purse seine nets and cods through offshore bottom trawl nets.



〈Shiogama Fish Market〉

Located near the center of the prefecture, Shiogama Fish Market is a large base for longline fishing vessels for tuna and seine fishing vessels near the Sanriku Coast. With an abundance of bluefin tuna landings in the summer and bigeye tuna landings in the fall, this market boasts one of the highest volume of tuna landings in the country.



Publisher: Fisheries Industry Promotion Division, Miyagi Prefectural Government

3-8-1 Honcho, Aoba-ku, Sendai, Miyagi 980-8570

TEL +81-22-211-2935

FAX +81-22-211-2939

Website: <http://www.pref.miyagi.jp/soshiki/suishin/>