

表 - 3 - 1 ( 1 ) 湿性沈着物分析結果

( 丸森 )

サンプル No.	採取開始				採取終了				試料量 ml	分取率 %	降水量 mm	pH	E C mS/m	SO4-- μmol/l	NO3- μmol/l	Cl- μmol/l	NH4+ μmol/l	Na+ μmol/l	K+ μmol/l	Ca++ μmol/l	Mg++ μmol/l	nss-SO4-- μmol/l	nss-Ca++ μmol/l
	年	月	日	時刻	年	月	日	時刻															
1	2007	3	27	1120	2007	4	10	1110	724.3	102.5	22.5	6.06	2.30	31.8	33.0	45.9	57.4	42.3	4.5	13.4	9.0	29.3	12.5
2	2007	4	10	1110	2007	4	24	1312	2,677.9	115.2	74.0	6.09	2.12	27.3	24.5	60.6	63.3	50.3	2.0	4.5	4.6	24.3	3.4
3	2007	4	24	1312	2007	5	8	1120	985.8	26.8	117.0	6.54	1.42	24.3	17.4	13.5	50.2	9.9	2.1	4.4	3.5	23.7	4.2
4	2007	5	8	1120	2007	5	22	1115	417.2	73.8	18.0	6.01	4.39	81.1	100.5	38.5	140.9	29.2	4.9	38.8	16.9	79.3	38.2
5	2007	5	22	1115	2007	6	5	1110	1,517.9	72.7	66.5	5.21	1.05	10.0	14.6	24.5	21.5	19.1	0.8	3.2	3.5	8.9	2.8
6	2007	6	5	1110	2007	6	19	1050	1,314.4	71.5	58.5	5.60	0.86	10.5	11.8	7.8	16.6	7.2	0.8	3.3	3.1	10.1	3.1
7	2007	6	19	1050	2007	7	3	1050	2,109.3	71.4	94.0	4.68	1.29	13.2	17.2	4.8	17.5	2.5	0.4	2.1	1.9	13.0	2.0
8	2007	7	3	1050	2007	7	17	1131	9,205.8	72.4	405.0	5.32	0.77	6.4	5.8	21.8	7.4	21.1	0.3	1.4	1.7	5.1	0.9
9	2007	7	17	1131	2007	7	31	1120	2,176.4	71.4	97.0	4.56	1.96	20.6	22.9	18.4	24.3	13.2	0.6	2.6	3.8	19.8	2.3
10	2007	7	31	1120	2007	8	14	1055	551.1	70.2	25.0	4.72	1.48	19.7	24.7	9.1	34.6	3.4	1.9	2.6	2.7	19.5	2.5
11	2007	8	14	1055	2007	8	28	1130	985.4	71.3	44.0	5.05	0.69	4.0	7.0	11.1	2.3	6.2	0.4	1.3	2.0	3.6	1.2
12	2007	8	28	1130	2007	9	11	1130	6,835.5	70.4	309.0	4.79	1.79	11.7	2.8	54.3	6.7	50.3	1.1	1.5	6.0	8.7	0.4
13	2007	9	11	1130	2007	9	25	1130	1,453.0	71.7	64.5	4.74	1.39	9.8	15.3	22.8	6.1	17.1	0.5	1.3	2.6	8.8	0.9
14	2007	9	25	1130	2007	10	9	1040	481.1	72.9	21.0	4.72	1.83	16.8	27.5	36.2	19.2	26.5	1.0	4.8	5.5	15.2	4.2
15	2007	10	9	1040	2007	10	23	1113	766.6	72.8	33.5	4.85	1.92	18.2	20.1	62.5	25.8	51.3	3.3	3.7	7.7	15.1	2.6
16	2007	10	23	1113	2007	11	6	1150	2,753.6	73.7	119.0	5.09	0.55	3.3	3.5	6.6	0.8	5.6	0.2	1.0	0.8	3.0	0.9
17	2007	11	6	1150	2007	11	20	1105	992.1	72.6	43.5	4.85	1.37	11.1	8.8	41.4	8.1	29.5	0.9	1.9	4.5	9.3	1.3
18	2007	11	20	1105	2007	12	4	1050	211.3	70.8	9.5	4.85	2.58	21.7	16.9	121.5	17.5	88.0	2.6	4.7	14.9	16.4	2.8
19	2007	12	4	1050	2007	12	18	1135	263.7	73.0	11.5	4.36	3.17	42.0	31.4	20.4	47.8	11.7	2.4	4.7	4.8	41.3	4.4
20	2007	12	18	1135	2008	1	8	1040	1,092.7	74.0	47.0	4.55	2.31	39.0	11.7	15.7	17.9	39.3	4.4	3.5	5.7	36.6	2.6
21	2008	1	8	1040	2008	1	22	1104	301.4	73.8	13.0	4.44	2.47	24.2	25.7	11.3	30.2	12.4	1.7	4.1	3.4	23.5	3.8
22	2008	1	22	1104	2008	2	5	1107	171.2	72.7	7.5	4.70	2.18	15.1	48.7	24.4	33.9	19.8	2.3	5.8	7.0	13.9	5.4
23	2008	2	5	1107	2008	2	19	1043	734.9	74.3	31.5	5.12	0.85	7.2	11.9	8.5	13.5	5.6	0.9	1.2	1.7	6.9	1.1
24	2008	2	19	1043	2008	3	4	1010	106.9	75.6	4.5	4.63	3.90	31.9	37.6	130.7	40.5	103.8	3.0	8.1	17.5	25.7	5.8
25	2008	3	4	1010	2008	3	18	1130	285.5	72.7	12.5	4.95	1.58	18.8	17.2	28.1	21.9	22.1	2.3	7.2	7.3	17.5	6.7
26	2008	3	18	1130	2008	4	2	1050	818.2	93.0	28.0	4.20	4.86	48.0	67.0	47.5	52.7	41.1	2.7	12.7	9.1	45.5	11.8
総量又は平均値									39,933.1	71.5	1777.0	4.92	1.44	14.5	13.2	28.3	18.8	25.1	1.1	3.0	3.8	13.0	2.4
最高値									9,205.8	115.2	405.0	6.54	4.86	81.1	100.5	130.7	140.9	103.8	4.9	38.8	17.5	79.3	38.2
最低値									106.9	26.8	4.5	4.20	0.55	3.3	2.8	4.8	0.8	2.5	0.2	1.0	0.8	3.0	0.4

表 - 3 - 1 ( 2 )

湿性沈着物計算結果 ( 当量濃度 )

( 丸森 )

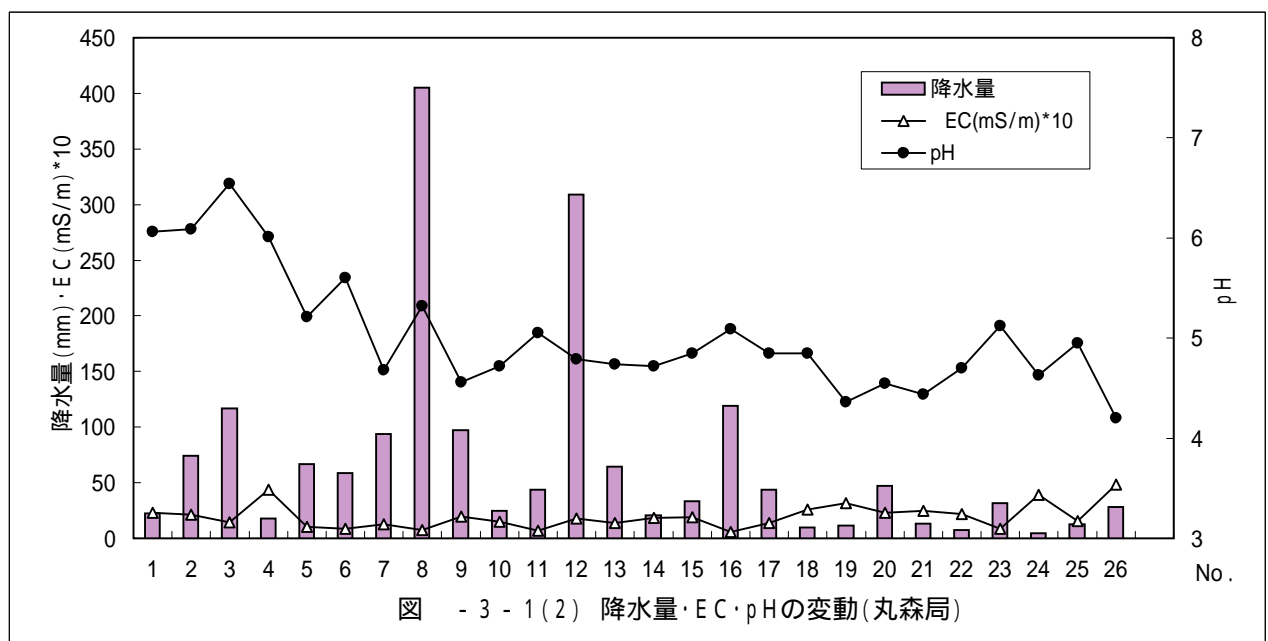
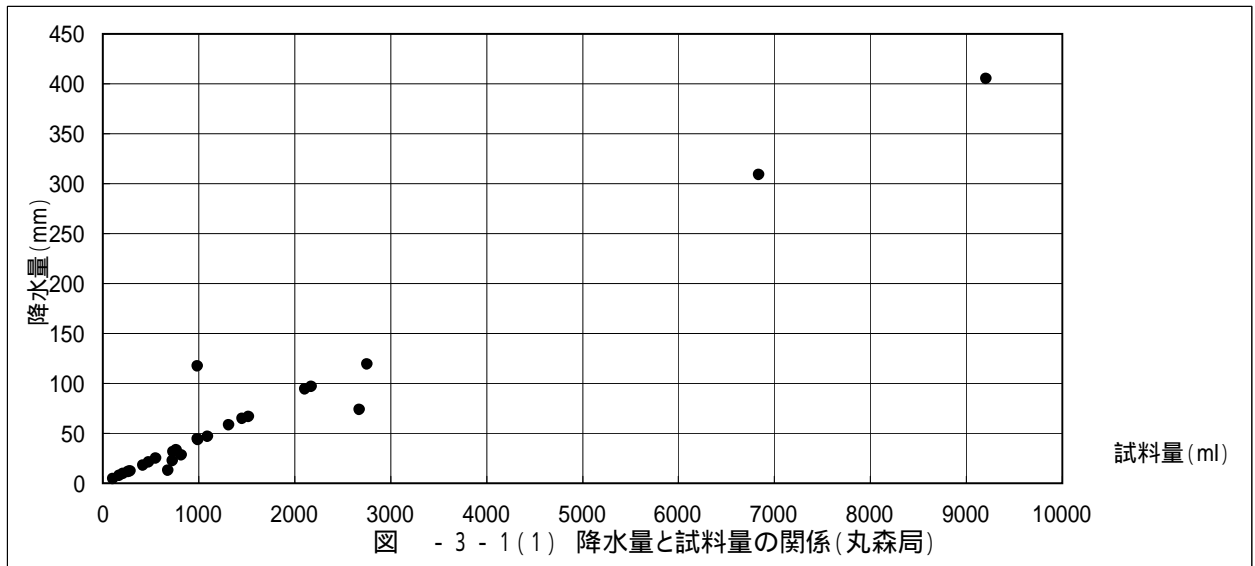
丸森	H+	SO4--	NO3-	Cl-	NH4+	Na+	K+	Ca++	Mg++	Anion	Cation	Total	基準 R1	R1	cal mS/m	mes mS/m	基準 R2	R2	nss-SO4-- μeq/l	nss-Ca++ μeq/l
1	0.87	63.6	33.0	45.9	57.4	42.3	4.5	26.8	18.0	142.5	149.9	292.4	8	2.5	2.05	2.30	13	-5.8	58.5	25.0
2	0.81	54.6	24.5	60.6	63.3	50.3	2.0	9.0	9.2	139.7	134.6	274.3	8	-1.9	1.94	2.12	13	-4.5	48.6	6.8
3	0.29	48.6	17.4	13.5	50.2	9.9	2.1	8.8	7.0	79.5	78.3	157.8	8	-0.8	1.15	1.42	13	-10.5	47.4	8.4
4	0.98	162.2	100.5	38.5	140.9	29.2	4.9	77.6	33.8	301.2	287.4	588.6	8	-2.3	4.21	4.39	9	-2.1	158.7	76.3
5	6.17	20.0	14.6	24.5	21.5	19.1	0.8	6.4	7.0	59.1	61.0	120.1	8	1.6	1.00	1.05	13	-2.3	17.7	5.6
6	2.51	21.0	11.8	7.8	16.6	7.2	0.8	6.6	6.2	40.6	39.9	80.5	15	-0.9	0.64	0.86	13	-15.0	20.1	6.3
7	20.89	26.4	17.2	4.8	17.5	2.5	0.4	4.2	3.8	48.4	49.3	97.7	15	0.9	1.29	1.29	13	0.0	26.1	4.1
8	4.79	12.8	5.8	21.8	7.4	21.1	0.3	2.8	3.4	40.4	39.8	80.2	15	-0.8	0.67	0.77	13	-6.6	10.3	1.9
9	27.54	41.2	22.9	18.4	24.3	13.2	0.6	5.2	7.6	82.5	78.4	160.9	8	-2.5	1.92	1.96	13	-1.1	39.6	4.6
10	19.05	39.4	24.7	9.1	34.6	3.4	1.9	5.2	5.4	73.2	69.6	142.8	8	-2.6	1.57	1.48	13	3.0	39.0	5.1
11	8.91	8.0	7.0	11.1	2.3	6.2	0.4	2.6	4.0	26.1	24.4	50.5	15	-3.3	0.60	0.69	13	-7.1	7.3	2.3
12	16.22	23.4	2.8	54.3	6.7	50.3	1.1	3.0	12.0	80.5	89.3	169.8	8	5.2	1.58	1.79	13	-6.2	17.4	0.8
13	18.20	19.6	15.3	22.8	6.1	17.1	0.5	2.6	5.2	57.7	49.7	107.4	8	-7.5	1.25	1.39	13	-5.1	17.5	1.9
14	19.05	33.6	27.5	36.2	19.2	26.5	1.0	9.6	11.0	97.3	86.4	183.7	8	-6.0	1.81	1.83	13	-0.7	30.4	8.4
15	14.13	36.4	20.1	62.5	25.8	51.3	3.3	7.4	15.4	119.0	117.3	236.3	8	-0.7	2.00	1.92	13	2.1	30.2	5.2
16	8.13	6.6	3.5	6.6	0.8	5.6	0.2	2.0	1.6	16.7	18.3	35.0	30	4.6	0.47	0.55	13	-8.0	5.9	1.8
17	14.13	22.2	8.8	41.4	8.1	29.5	0.9	3.8	9.0	72.4	65.4	137.8	8	-5.1	1.34	1.37	13	-1.3	18.7	2.5
18	14.13	43.4	16.9	121.5	17.5	88.0	2.6	9.4	29.8	181.8	161.4	343.2	8	-5.9	2.69	2.58	13	2.1	32.8	5.6
19	43.65	84.0	31.4	20.4	47.8	11.7	2.4	9.4	9.6	135.8	124.6	260.4	8	-4.3	3.11	3.17	9	-0.9	82.6	8.9
20	28.18	78.0	11.7	15.7	17.9	39.3	4.4	7.0	11.4	105.4	108.2	213.6	8	1.3	2.28	2.31	13	-0.7	73.3	5.3
21	36.31	48.4	25.7	11.3	30.2	12.4	1.7	8.2	6.8	85.4	95.6	181.0	8	5.6	2.31	2.47	13	-3.4	46.9	7.7
22	19.95	30.2	48.7	24.4	33.9	19.8	2.3	11.6	14.0	103.3	101.6	204.9	8	-0.9	1.98	2.18	13	-4.7	27.8	10.7
23	7.59	14.4	11.9	8.5	13.5	5.6	0.9	2.4	3.4	34.8	33.4	68.2	15	-2.1	0.70	0.85	13	-9.9	13.7	2.2
24	23.44	63.8	37.6	130.7	40.5	103.8	3.0	16.2	35.0	232.1	221.9	454.0	8	-2.2	3.72	3.90	9	-2.4	51.3	11.7
25	11.22	37.6	17.2	28.1	21.9	22.1	2.3	14.4	14.6	82.9	86.5	169.4	8	2.1	1.48	1.58	13	-3.2	34.9	13.4
26	63.10	96.0	67.0	47.5	52.7	41.1	2.7	25.4	18.2	210.5	203.2	413.7	8	-1.8	4.68	4.86	9	-1.9	91.1	23.6
平均值	12.16	29.0	13.2	28.3	18.8	25.1	1.1	5.9	7.6	70.6	70.7	141.3	8	0.1	1.32	1.44	13	-4.4	26.0	4.8
最高値	63.10	162.2	100.5	130.7	140.9	103.8	4.9	77.6	35.0	301.2	287.4	588.6	30	5.6	4.68	4.86	13	3.0	158.7	76.3
最低値	0.29	6.6	2.8	4.8	0.8	2.5	0.2	2.0	1.6	16.7	18.3	35.0	8	-7.5	0.47	0.55	9	-15.0	5.9	0.8

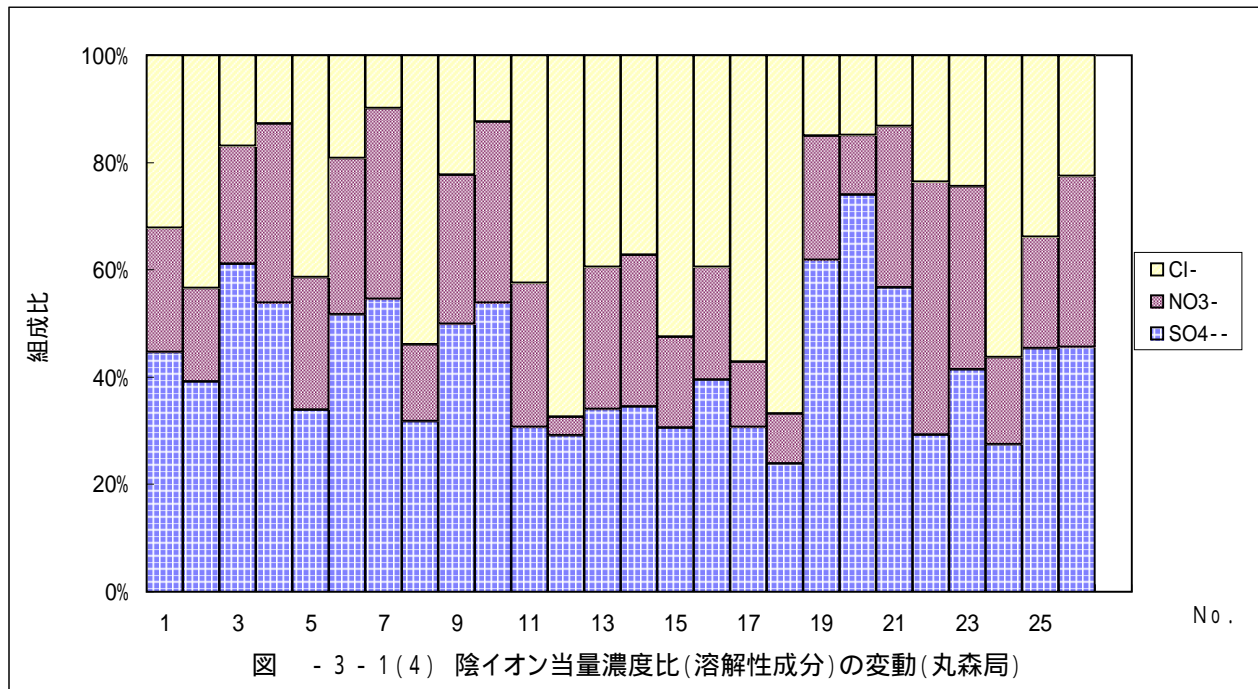
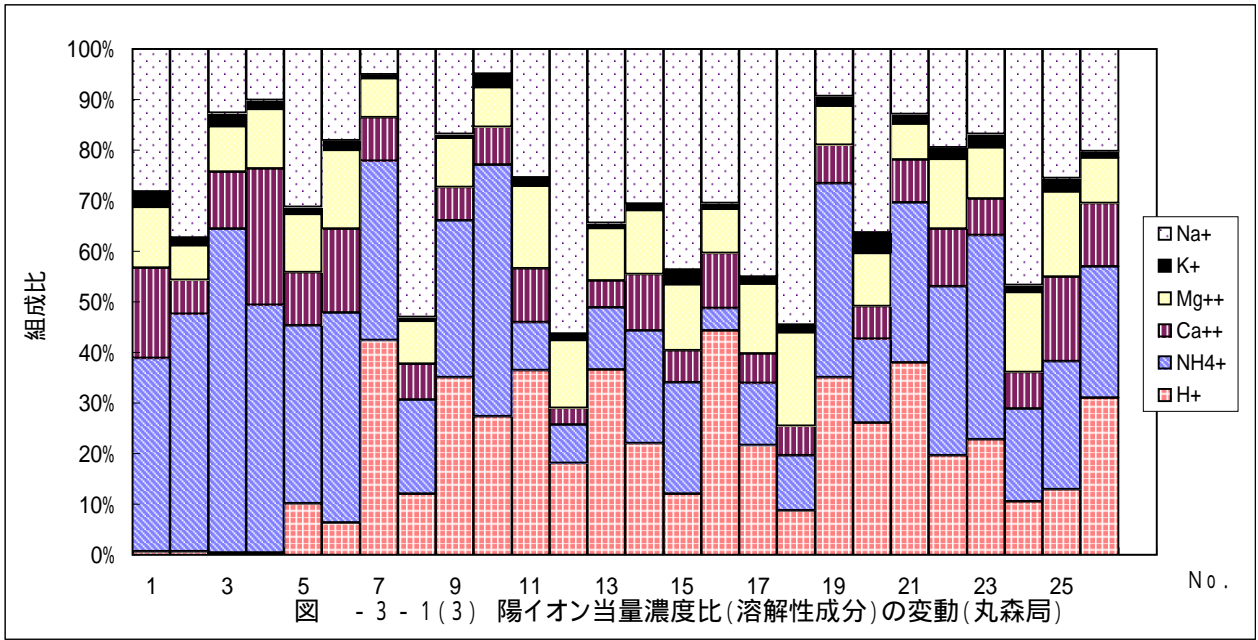
表 - 3 - 1 ( 3 )

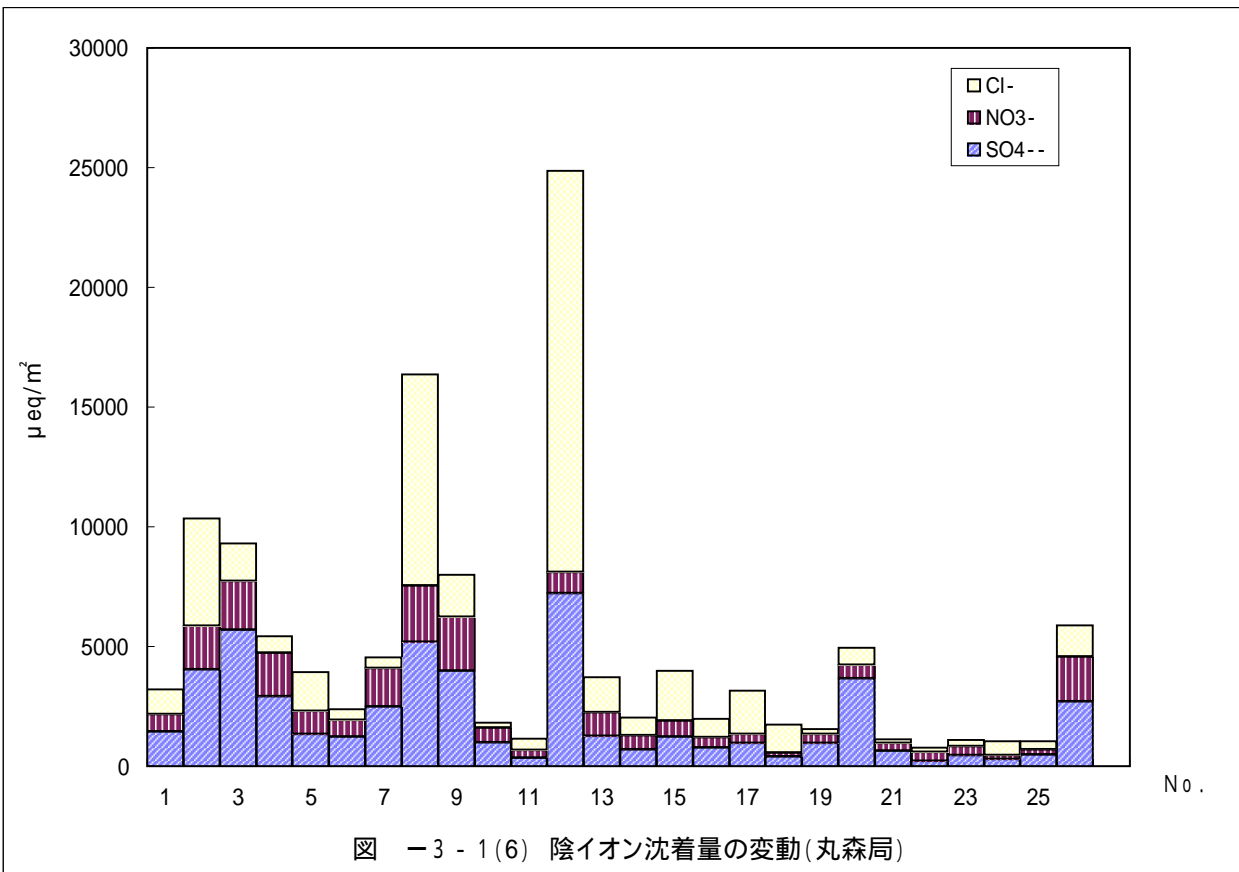
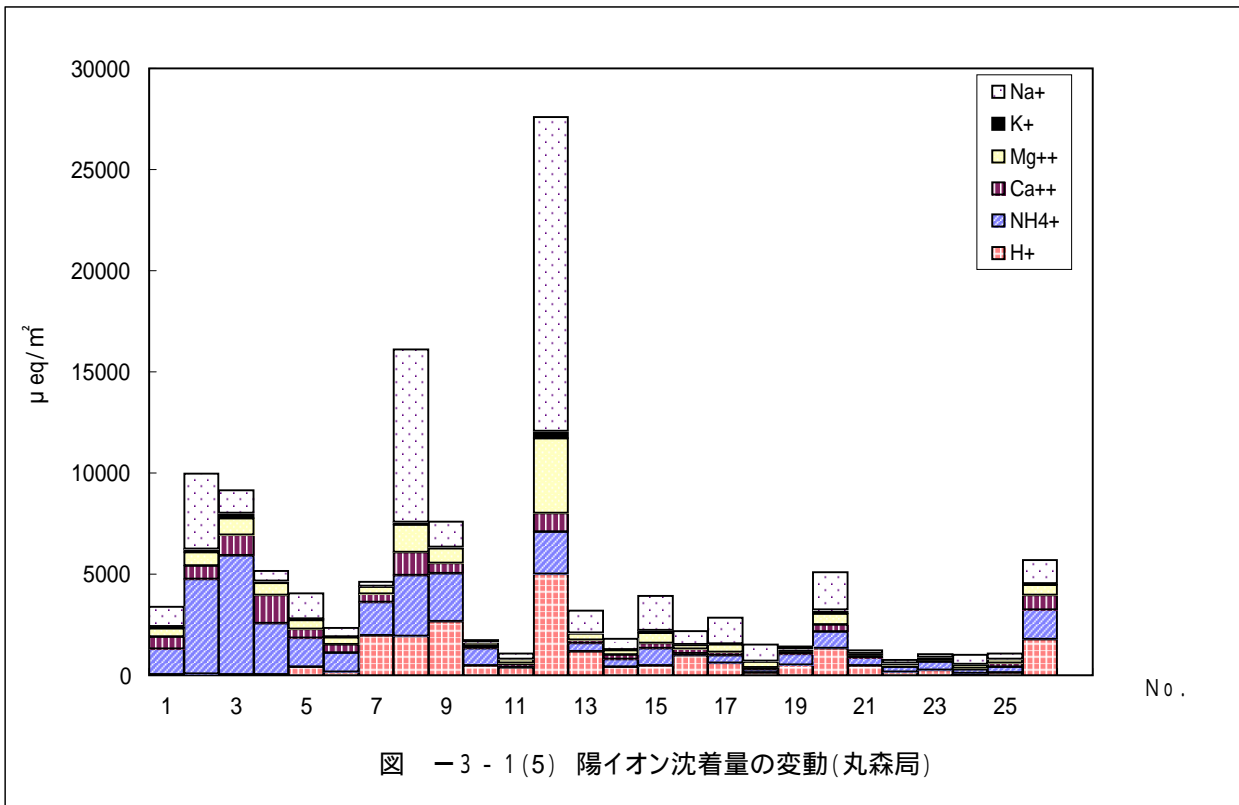
湿性沈着計算結果 ( 沈着量 )

( 丸森 )

丸 森	H+	SO4--	NO3-	Cl-	NH4+	Na+	K+	Ca++	Mg++	Anion	Cation	Total	*降水量	nss-SO4--	nss-Ca++
	μeq/m <sup>2</sup>	μeq/m <sup>2</sup>	μeq/m <sup>2</sup>	μeq/m <sup>2</sup>	μeq/m <sup>2</sup>	μeq/m <sup>2</sup>	μeq/m <sup>2</sup>	μeq/m <sup>2</sup>	μeq/m <sup>2</sup>	μeq/m <sup>2</sup>	μeq/m <sup>2</sup>	μeq/m <sup>2</sup>	mS/m*mm	μeq/m <sup>2</sup>	μeq/m <sup>2</sup>
1	20	1,431	743	1,033	1,292	952	101	603	405	3,206	3,372	6,578	52	1,317	561
2	60	4,040	1,813	4,484	4,684	3,722	148	666	681	10,338	9,961	20,299	157	3,593	503
3	34	5,686	2,036	1,580	5,873	1,158	246	1,030	819	9,302	9,160	18,461	166	5,547	979
4	18	2,920	1,809	693	2,536	526	88	1,397	608	5,422	5,173	10,594	79	2,856	1,374
5	410	1,330	971	1,629	1,430	1,270	53	426	466	3,930	4,054	7,984	70	1,177	370
6	147	1,229	690	456	971	421	47	386	363	2,375	2,335	4,710	50	1,178	368
7	1,964	2,482	1,617	451	1,645	235	38	395	357	4,550	4,634	9,183	121	2,453	385
8	1,938	5,184	2,349	8,829	2,997	8,546	122	1,134	1,377	16,362	16,113	32,475	312	4,156	761
9	2,672	3,996	2,221	1,785	2,357	1,280	58	504	737	8,003	7,609	15,611	190	3,842	448
10	476	985	618	228	865	85	48	130	135	1,830	1,739	3,569	37	975	126
11	392	352	308	488	101	273	18	114	176	1,148	1,074	2,223	30	319	102
12	5,011	7,231	865	16,779	2,070	15,543	340	927	3,708	24,875	27,599	52,474	553	5,361	248
13	1,174	1,264	987	1,471	393	1,103	32	168	335	3,722	3,205	6,927	90	1,132	120
14	400	706	578	760	403	557	21	202	231	2,043	1,813	3,857	38	639	177
15	473	1,219	673	2,094	864	1,719	111	248	516	3,987	3,930	7,917	64	1,013	173
16	967	785	417	785	95	666	24	238	190	1,987	2,181	4,168	65	705	209
17	614	966	383	1,801	352	1,283	39	165	392	3,149	2,846	5,995	60	811	109
18	134	412	161	1,154	166	836	25	89	283	1,727	1,534	3,261	25	312	53
19	502	966	361	235	550	135	28	108	110	1,562	1,432	2,994	36	950	102
20	1,325	3,666	550	738	841	1,847	207	329	536	4,954	5,085	10,038	109	3,444	248
21	472	629	334	147	393	161	22	107	88	1,110	1,243	2,353	32	610	100
22	150	227	365	183	254	149	17	87	105	775	762	1,536	16	209	81
23	239	454	375	268	425	176	28	76	107	1,096	1,052	2,148	27	432	68
24	105	287	169	588	182	467	14	73	158	1,044	999	2,043	18	231	52
25	140	470	215	351	274	276	29	180	183	1,036	1,082	2,118	20	437	168
26	1,767	2,688	1,876	1,330	1,476	1,151	76	711	510	5,894	5,689	11,583	136	2,550	661
総量	21,605	51,604	23,482	50,339	33,491	44,536	1,977	10,492	13,575	125,426	125,676	251,102	2,553	46,248	8,546







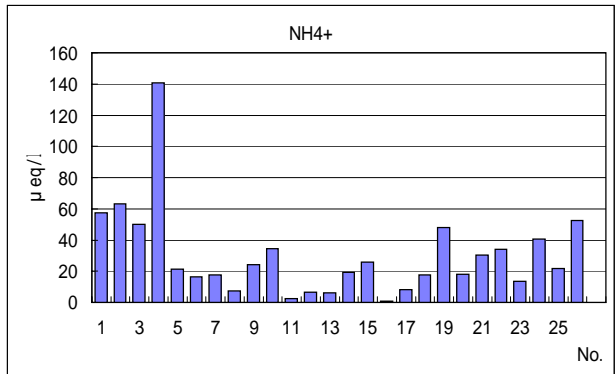
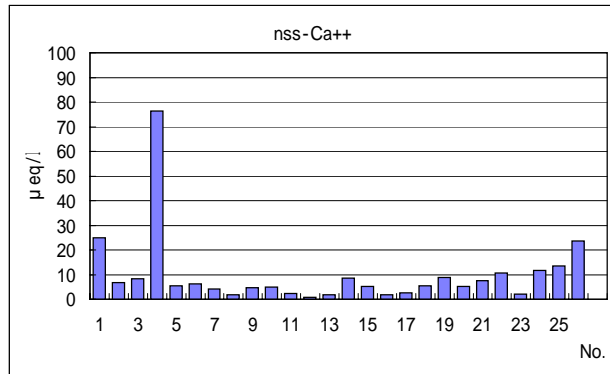
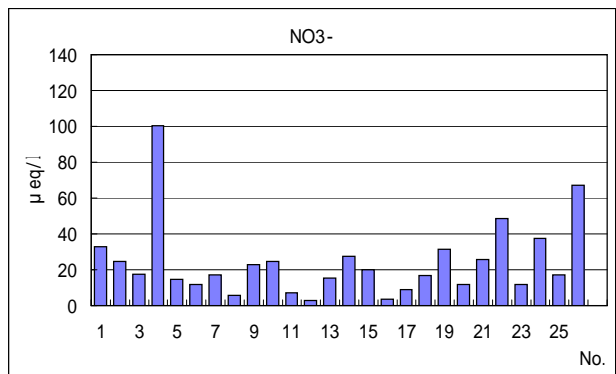
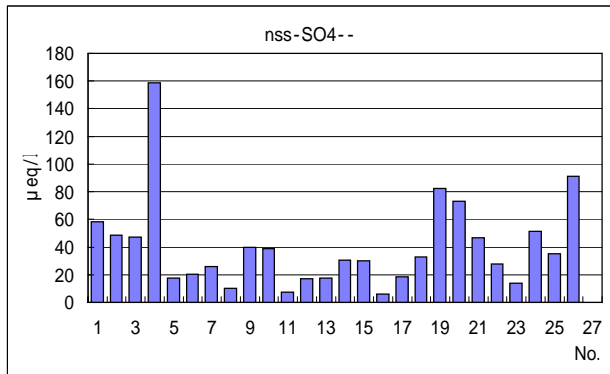


図 - 3 - 1 (7) pH因子成分の当量濃度(溶解性成分)(丸森局)

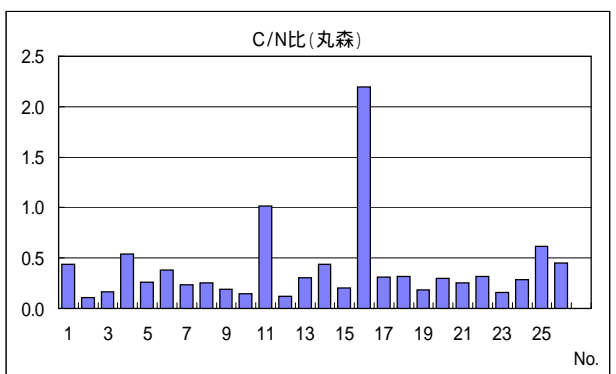
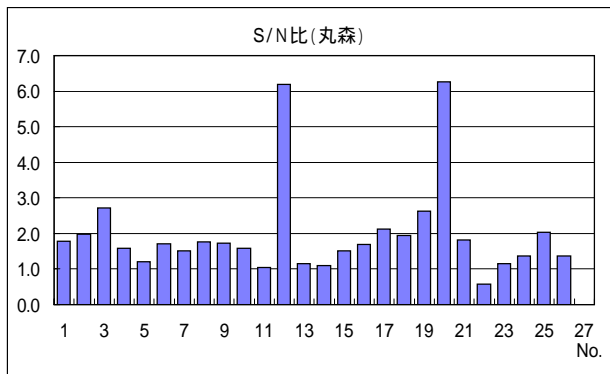


図 - 3 - 1 (8) S / N比・C / N比(溶解性成分)(丸森局)

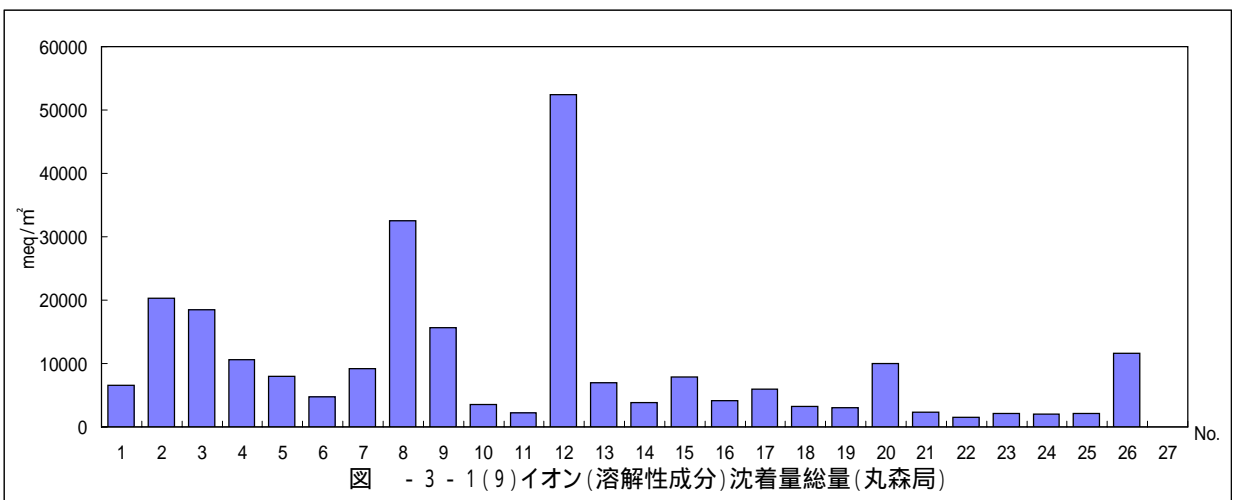


図 - 3 - 1 (9) イオン(溶解性成分)沈着量総量(丸森局)

表 - 3 - 2 ( 1 ) 湿性沈着物分析結果

( 仙台 )

サンプ No.	採取開始 年 月 日	採取終了 年 月 日	試料量 ml	降水量 mm	pH	E C mS/m	S04-- μmol/l	N03- μmol/l	Cl- μmol/l	NH4+ μmol/l	Na+ μmol/l	K+ μmol/l	Ca++ μmol/l	Mg++ μmol/l	nss-S04-- μmol/l	nss-Ca++ μmol/l
1																
2	2007 4 10	2007 4 24	1,431	45.6	4.56	2.86	33.3	37.5	41.3	35.8	34.2	1.1	15.0	7.0	31.2	14.3
3	2007 4 24	2007 5 8	1,177	37.5	4.89	1.38	19.1	19.2	10.0	23.9	6.9	0.2	8.0	3.3	18.7	7.8
4	2007 5 8	2007 5 22	1,073	34.2	4.65	3.15	44.2	43.8	26.0	53.0	20.8	1.6	18.5	6.3	42.9	18.0
5	2007 5 22	2007 6 5	2,013	64.1	4.85	1.05	10.5	12.0	8.7	12.0	5.5	0.3	4.6	1.7	10.2	4.5
6	2007 6 5	2007 6 19	1,527	48.6	4.63	1.76	18.1	18.8	17.8	19.9	15.6	0.2	5.3	2.9	17.2	5.0
7	2007 6 19	2007 7 3	4,379	139.5	4.48	2.07	24.7	20.9	6.0	30.8	2.1	0.6	2.4	1.1	24.6	2.4
8	2007 7 3	2007 7 17	6,874	218.9	4.77	1.40	12.2	10.3	26.2	13.9	25.7	0.3	2.3	2.9	10.7	1.7
9	2007 7 17	2007 7 30	1,309	41.7	4.44	2.52	22.1	32.0	29.6	28.5	30.4	0.4	3.3	4.4	20.3	2.6
10	2007 7 30	2007 8 14	667.2	21.2	4.73	1.35	14.0	27.6	7.1	27.6	4.0	1.1	2.0	0.8	13.8	1.9
11	2007 8 14	2007 8 28	1,394	44.4	5.03	0.87	10.7	12.0	4.2	16.0	2.6	0.6	1.1	0.5	10.5	1.0
12	2007 8 28	2007 9 11	4,012	127.8	4.73	2.57	18.9	13.7	106.0	11.2	85.6	2.6	3.6	9.8	13.8	1.7
13	2007 9 11	2007 9 25	2,738	87.2	5.05	1.07	9.4	14.2	19.7	13.6	16.7	1.2	2.0	2.0	8.4	1.6
14	2007 9 25	2007 10 9	585.1	18.6	4.76	2.14	16.0	29.5	38.2	22.8	34.4	1.9	3.8	4.7	13.9	3.0
15	2007 10 9	2007 10 23	466.3	14.9	5.04	1.94	12.8	11.3	87.0	9.7	74.0	1.9	3.2	8.0	8.3	1.6
16	2007 10 23	2007 11 6	3,861	123.0	5.25	0.45	4.1	5.6	6.9	3.5	3.6	0.1	0.8	0.9	3.9	0.7
17	2007 11 6	2007 11 20	1,361	43.4	4.99	1.12	11.6	7.7	32.5	11.3	26.6	1.7	2.2	3.2	10.0	1.6
18	2007 11 20	2007 12 4	223.7	7.1	4.91	3.22	30.8	28.3	139.1	49.3	111.0	3.1	8.4	13.7	24.1	6.0
19	2007 12 4	2007 12 18	389.4	12.4	4.38	3.00	30.6	30.1	26.2	37.3	20.5	2.1	5.1	2.8	29.4	4.7
20	2007 12 18	2008 1 8	1,531	48.8	5.04	1.95	16.2	3.9	62.9	21.1	57.9	1.8	6.2	6.8	12.7	4.9
21	2008 1 8	2008 1 22	185.8	5.9	3.99	7.25	74.7	73.0	24.5	83.1	22.0	5.6	16.4	4.5	73.4	15.9
22	2008 1 22	2008 2 5	84.4	2.7	4.60	4.06	33.9	60.3	94.3	70.4	87.3	4.3	15.4	8.0	28.7	13.5
23	2008 2 5	2008 2 19	706.4	22.5	5.42	0.84	8.2	13.6	12.8	24.0	10.6	0.6	2.4	1.1	7.6	2.2
24	2008 2 19	2008 3 4	243.8	7.8	4.99	5.67	42.7	25.6	320.0	45.6	267.6	8.3	16.3	29.5	26.6	10.5
25	2008 3 4	2008 3 18	235.3	7.5	4.67	4.56	50.1	53.1	139.3	48.2	124.5	3.6	27.0	17.7	42.6	24.3
26	2008 3 18	2008 4 2	1,075	34.2	4.27	3.88	40.4	48.2	30.1	49.1	25.3	2.3	8.3	4.3	38.9	7.7
	2008 4 2	0 0 0														
総量又は平均値			39,541	1,259.3	4.7	1.8	17.5	17.4	33.2	20.2	27.9	1.0	4.3	3.8	15.8	3.7
最高値			6,874	218.9	5.4	7.3	74.7	73.0	320.0	83.1	267.6	8.3	27.0	29.5	73.4	24.3
最低値			84.4	2.7	4.0	0.5	4.1	3.9	4.2	3.5	2.1	0.1	0.8	0.5	3.9	0.7



表 - 3 - 2 ( 2 ) 湿性沈着物計算結果 ( 当量濃度 ) ( 仙台 )

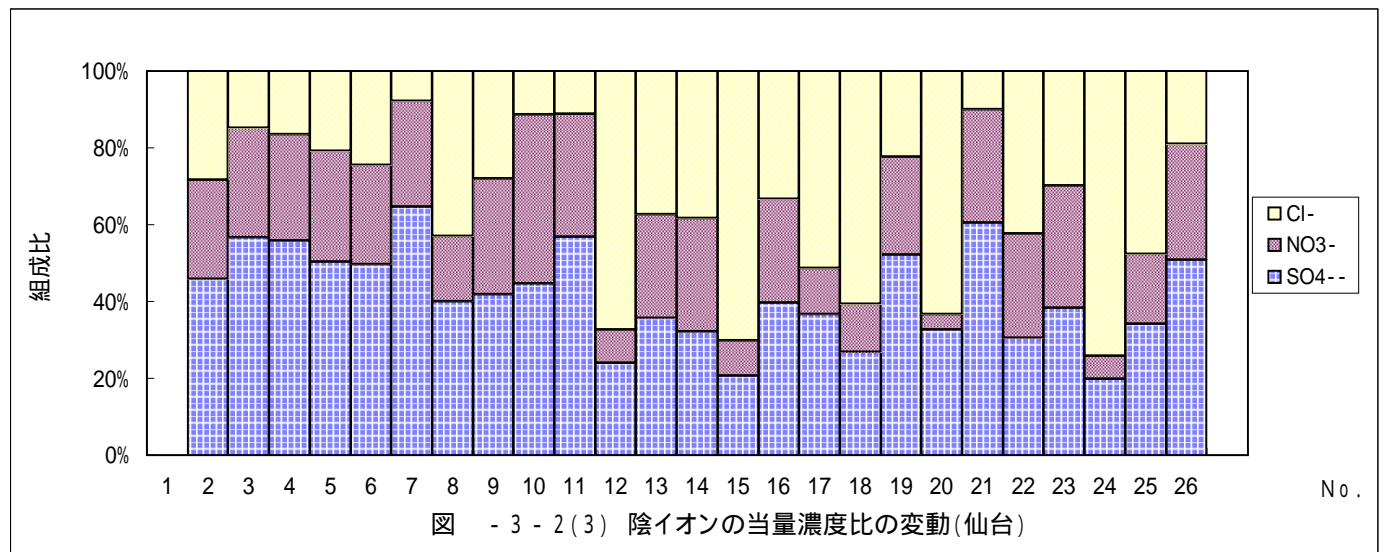
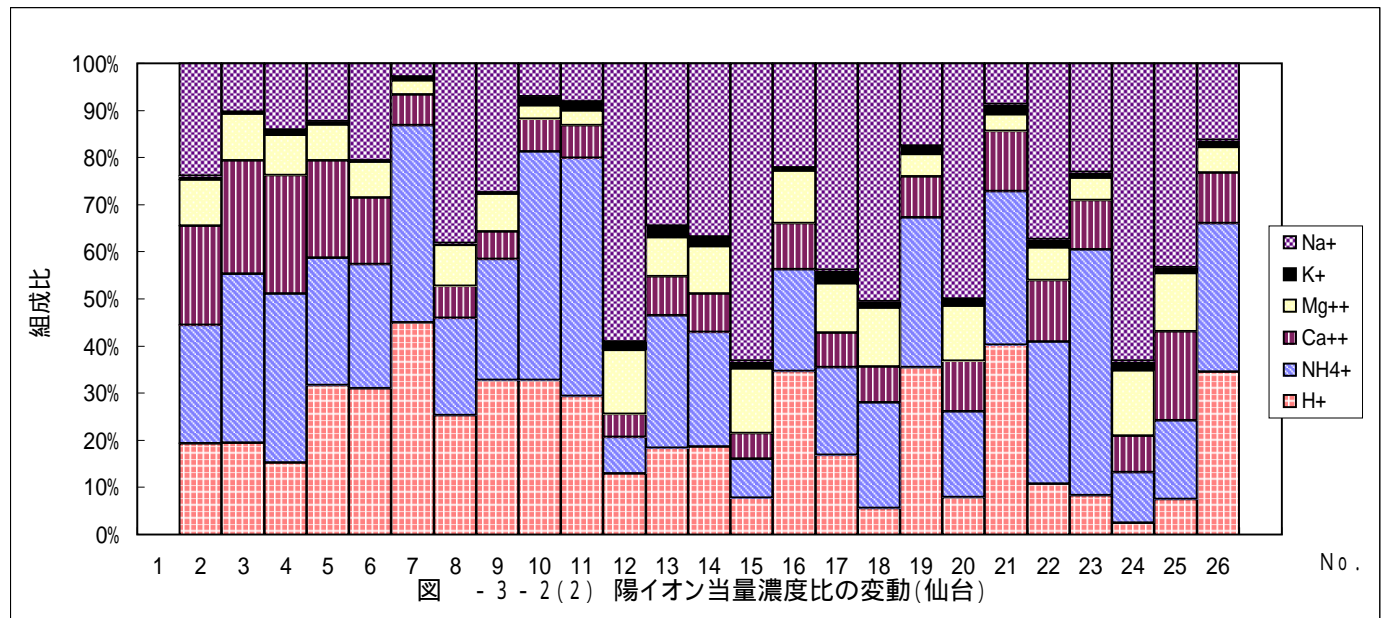
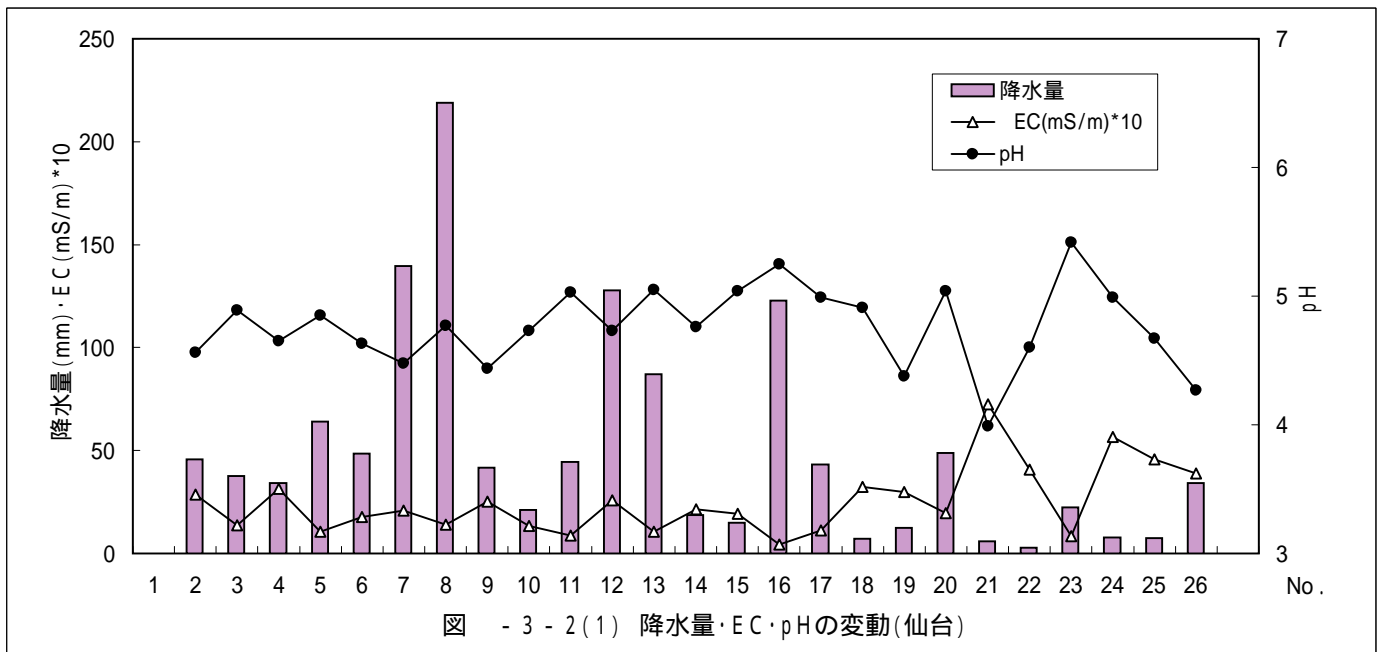
仙 台	H+	SO4--	NO3-	Cl-	NH4+	Na+	K+	Ca++	Mg++	Anion	Cation	Total	R1	cal	mes	R2	nss-SO4--	nss-Ca++
	μeq/l	μeq/l	μeq/l	μeq/l	μeq/l	μeq/l	μeq/l	μeq/l	μeq/l	μeq/l	μeq/l	μeq/l		mS/m	mS/m		μeq/l	μeq/l
1																		
2	27.5	66.6	37.5	41.3	35.8	34.2	1.1	30.0	14.0	145.4	142.6	288.0	-1.0	2.78	2.86	-1.5	62.5	28.5
3	12.9	38.2	19.2	10.0	23.9	6.9	0.2	16.0	6.6	67.4	66.5	133.9	-0.7	1.31	1.38	-2.5	37.4	15.7
4	22.4	88.4	43.8	26.0	53.0	20.8	1.6	37.0	12.6	158.2	147.4	305.6	-3.5	2.80	3.15	-6.0	85.9	36.1
5	14.1	21.0	12.0	8.7	12.0	5.5	0.3	9.2	3.4	41.7	44.5	86.2	3.3	1.01	1.05	-2.2	20.3	9.0
6	23.4	36.2	18.8	17.8	19.9	15.6	0.2	10.6	5.8	72.8	75.5	148.3	1.8	1.70	1.76	-1.7	34.3	9.9
7	33.1	49.4	20.9	6.0	30.8	2.1	0.6	4.8	2.2	76.3	73.6	149.9	-1.8	2.03	2.07	-1.0	49.1	4.7
8	17.0	24.4	10.3	26.2	13.9	25.7	0.3	4.6	5.8	60.9	67.3	128.2	5.0	1.35	1.40	-1.7	21.3	3.5
9	36.3	44.2	32.0	29.6	28.5	30.4	0.4	6.6	8.8	105.8	111.0	216.8	2.4	2.53	2.52	0.2	40.5	5.3
10	18.6	28.0	27.6	7.1	27.6	4.0	1.1	4.0	1.6	62.7	56.9	119.6	-4.8	1.39	1.35	1.5	27.5	3.8
11	9.3	21.4	12.0	4.2	16.0	2.6	0.6	2.2	1.0	37.6	31.7	69.3	-8.5	0.77	0.87	-6.2	21.1	2.1
12	18.6	37.8	13.7	106.0	11.2	85.6	2.6	7.2	19.6	157.5	144.8	302.3	-4.2	2.54	2.57	-0.6	27.5	3.5
13	8.9	18.8	14.2	19.7	13.6	16.7	1.2	4.0	4.0	52.7	48.4	101.1	-4.2	0.95	1.07	-5.9	16.8	3.3
14	17.4	32.0	29.5	38.2	22.8	34.4	1.9	7.6	9.4	99.7	93.5	193.2	-3.2	1.82	2.14	-8.2	27.9	6.1
15	9.1	25.6	11.3	87.0	9.7	74.0	1.9	6.4	16.0	123.9	117.1	241.0	-2.8	1.85	1.94	-2.4	16.7	3.2
16	5.6	8.2	5.6	6.9	3.5	3.6	0.1	1.6	1.8	20.7	16.2	36.9	-12.1	0.42	0.45	-3.6	7.8	1.4
17	10.2	23.2	7.7	32.5	11.3	26.6	1.7	4.4	6.4	63.4	60.6	124.0	-2.2	1.14	1.12	0.7	20.0	3.2
18	12.3	61.6	28.3	139.1	49.3	111.0	3.1	16.8	27.4	229.0	219.9	448.9	-2.0	3.37	3.22	2.3	48.2	11.9
19	41.7	61.2	30.1	26.2	37.3	20.5	2.1	10.2	5.6	117.5	117.4	234.9	0.0	2.85	3.00	-2.6	58.7	9.3
20	9.1	32.4	3.9	62.9	21.1	57.9	1.8	12.4	13.6	99.2	115.9	215.1	7.8	1.69	1.95	-7.1	25.4	9.9
21	102.3	149.4	73.0	24.5	83.1	22.0	5.6	32.8	9.0	246.9	254.8	501.7	1.6	6.49	7.25	-5.5	146.8	31.8
22	25.1	67.8	60.3	94.3	70.4	87.3	4.3	30.8	16.0	222.4	233.9	456.3	2.5	3.83	4.06	-2.9	57.3	27.0
23	3.8	16.4	13.6	12.8	24.0	10.6	0.6	4.8	2.2	42.8	46.0	88.8	3.6	0.73	0.84	-6.8	15.1	4.3
24	10.2	85.4	25.6	320.0	45.6	267.6	8.3	32.6	59.0	431.0	423.3	854.3	-0.9	5.91	5.67	2.1	53.2	20.9
25	21.4	100.2	53.1	139.3	48.2	124.5	3.6	54.0	35.4	292.6	287.1	579.7	-1.0	4.51	4.56	-0.6	85.2	48.6
26	53.7	80.8	48.2	30.1	49.1	25.3	2.3	16.6	8.6	159.1	155.6	314.7	-1.1	3.75	3.88	-1.7	77.8	15.5
平均值	18.9	35.0	17.4	33.2	20.2	27.9	1.0	8.6	7.7	85.6	84.4	170.0	-0.7	1.71	1.78	-2.1	31.6	7.4
最高値	102.3	149.4	73	320	83.1	267.6	8.3	54	59	431	423.3	854.3	7.8	6.49	7.25	2.3	146.8	48.6
最低値	3.8	8.2	3.9	4.2	3.5	2.1	0.1	1.6	1.0	20.7	16.2	36.9	-12.1	0.4	0.5	-8.2	7.8	1.4

表 - 3 - 3 ( 3 )

湿性沈着計算結果 ( 沈着量 )

( 仙台 )

仙 台	H+ μ eq/m <sup>2</sup>	SO4-- μ eq/m <sup>2</sup>	NO3- μ eq/m <sup>2</sup>	Cl- μ eq/m <sup>2</sup>	NH4+ μ eq/m <sup>2</sup>	Na+ μ eq/m <sup>2</sup>	K+ μ eq/m <sup>2</sup>	Ca++ μ eq/m <sup>2</sup>	Mg++ μ eq/m <sup>2</sup>	Anion μ eq/m <sup>2</sup>	Cation μ eq/m <sup>2</sup>	Total μ eq/m <sup>2</sup>	*降水量 mS/m*mm	nss-SO4-- μ eq/m <sup>2</sup>	nss-Ca++ μ eq/m <sup>2</sup>
1															
2	1,254.9	3,035	1,709	1,882	1,631	1,558	50	1,367	638	6,625	6,499	13,124	130.3	2,847	1,299
3	482.8	1,432	720	375	896	259	7	600	247	2,526	2,492	5,018	51.7	1,401	588
4	764.7	3,019	1,496	888	1,810	710	55	1,264	430	5,403	5,034	10,438	107.6	2,934	1,233
5	905.6	1,346	769	558	769	353	19	590	218	2,674	2,855	5,528	67.3	1,304	574
6	1,139.9	1,760	914	866	968	759	10	515	282	3,540	3,673	7,213	85.6	1,669	482
7	4,618.2	6,890	2,915	837	4,296	293	84	669	307	10,641	10,267	20,908	288.7	6,855	657
8	3,717.9	5,342	2,255	5,736	3,043	5,626	66	1,007	1,270	13,332	14,730	28,062	306.5	4,665	761
9	1,513.0	1,842	1,334	1,233	1,188	1,267	17	275	367	4,409	4,626	9,035	105.0	1,690	220
10	395.7	595	586	151	586	85	23	85	34	1,332	1,209	2,542	28.7	585	81
11	414.4	950	533	186	710	115	27	98	44	1,670	1,409	3,079	38.6	936	93
12	2,379.0	4,829	1,750	13,543	1,431	10,936	332	920	2,504	20,122	18,502	38,625	328.3	3,514	442
13	777.0	1,639	1,238	1,717	1,186	1,456	105	349	349	4,594	4,221	8,815	93.3	1,464	285
14	323.8	596	550	712	425	641	35	142	175	1,858	1,742	3,600	39.9	519	114
15	135.4	380	168	1,292	144	1,099	28	95	238	1,840	1,739	3,579	28.8	248	47
16	691.5	1,008	689	848	430	443	12	197	221	2,545	1,995	4,540	55.3	955	177
17	443.6	1,006	334	1,409	490	1,153	74	191	277	2,748	2,628	5,377	48.6	867	140
18	87.6	439	202	991	351	791	22	120	195	1,631	1,567	3,198	22.9	344	85
19	517.0	759	373	325	463	254	26	126	69	1,457	1,456	2,913	37.2	728	115
20	444.6	1,580	190	3,066	1,029	2,823	88	605	663	4,836	5,651	10,487	95.1	1,240	481
21	605.5	884	432	145	492	130	33	194	53	1,461	1,508	2,969	42.9	868	188
22	67.5	182	162	254	189	235	12	83	43	598	629	1,227	10.9	154	73
23	85.5	369	306	288	540	238	13	108	49	963	1,035	1,998	18.9	340	98
24	79.5	663	199	2,485	354	2,078	64	253	458	3,347	3,287	6,634	44.0	413	162
25	160.2	751	398	1,044	361	933	27	405	265	2,193	2,151	4,344	34.2	639	364
26	1,838.2	2,766	1,650	1,030	1,681	866	79	568	294	5,446	5,326	10,772	132.8	2,662	530
総量	23,843	44,062	21,870	41,861	25,463	35,101	1,308	10,824	9,693	107,793	106,232	214,026	2,243	39,841	9,290



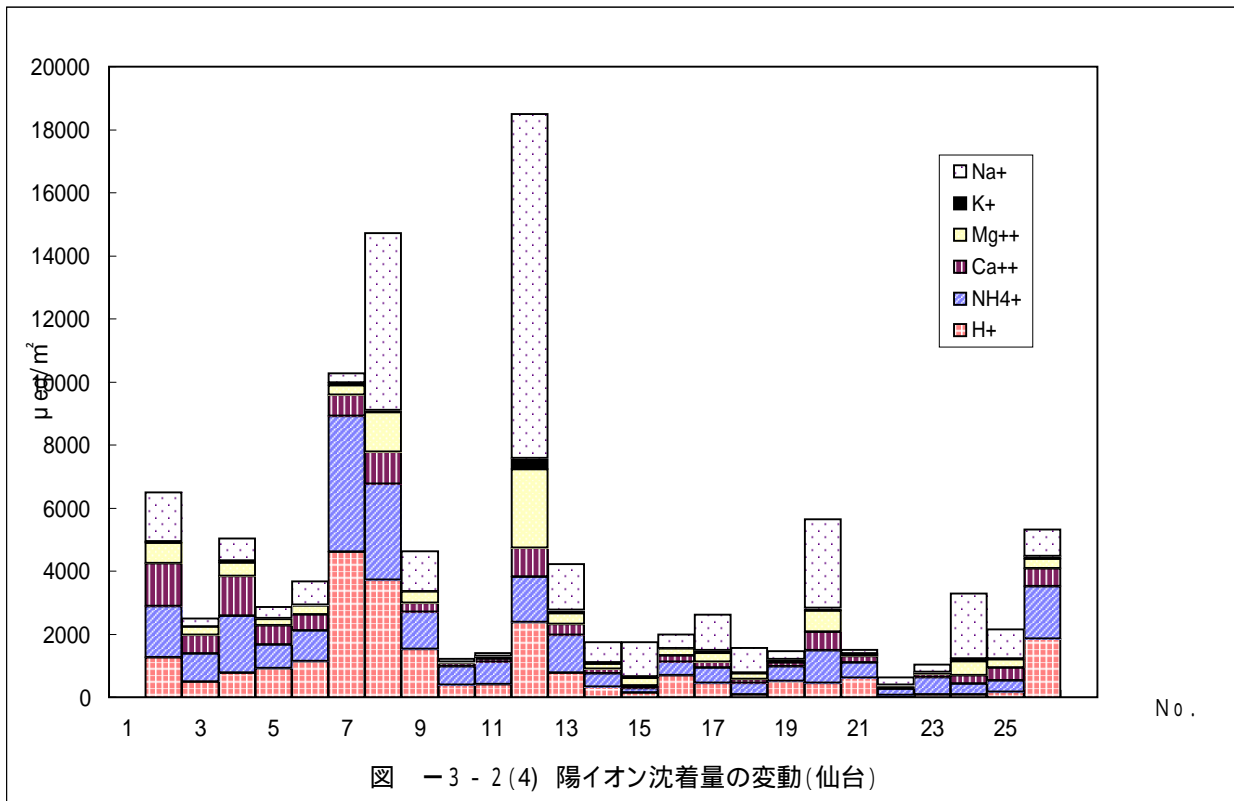


図 - 3 - 2 (4) 陽イオン沈着量の変動(仙台)

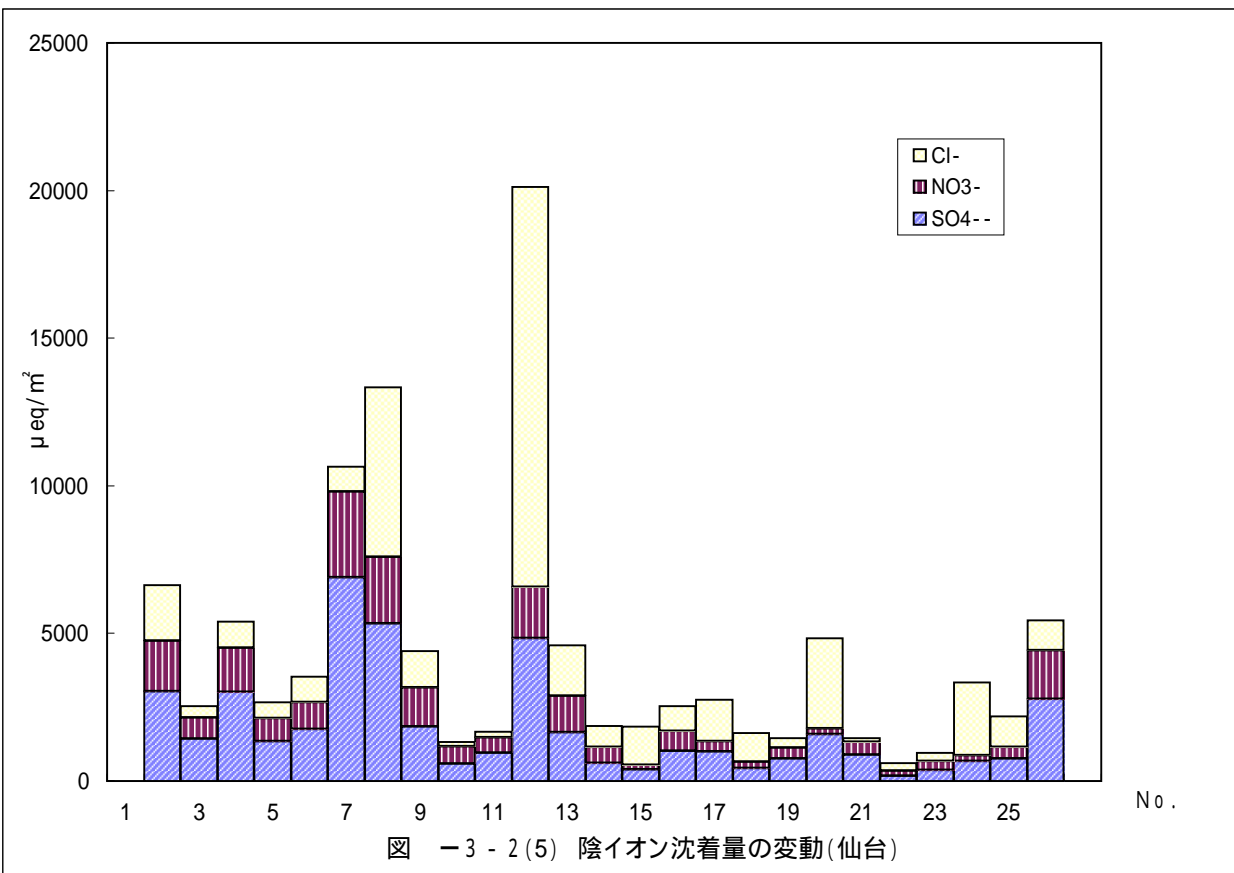


図 - 3 - 2 (5) 陰イオン沈着量の変動(仙台)

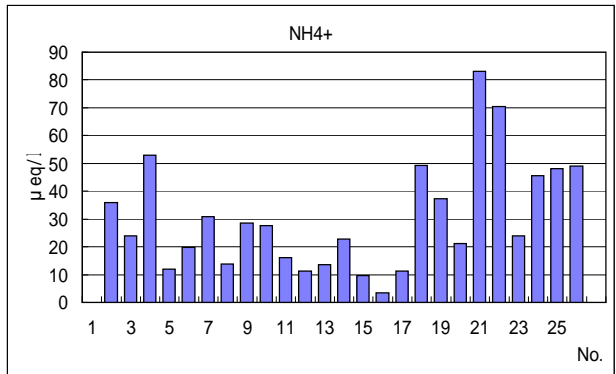
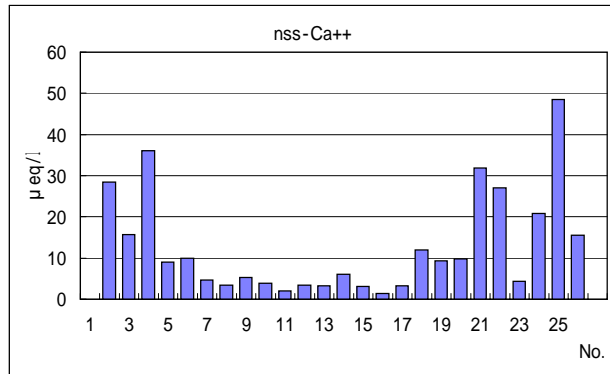
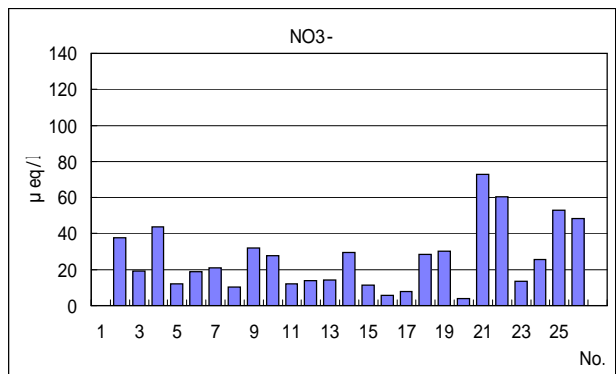
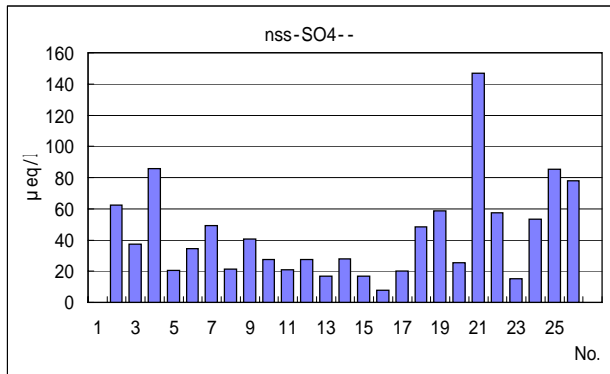


図 - 3 - 2 (6) pH因子成分の当量濃度(仙台)

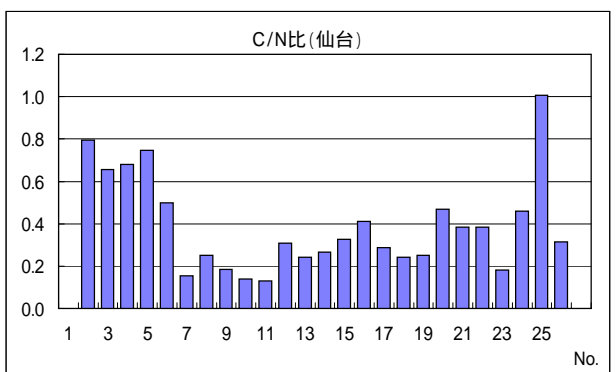
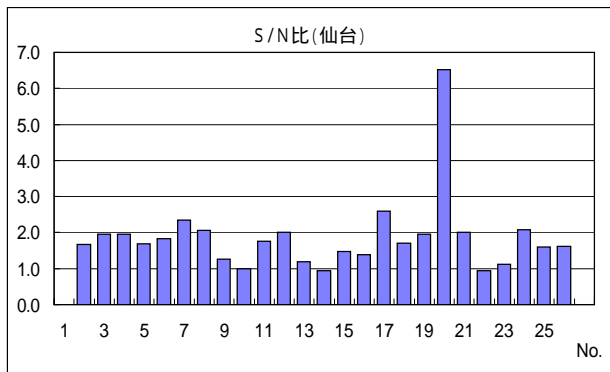


図 - 3 - 2 (7) S / N比・C / N比(仙台)

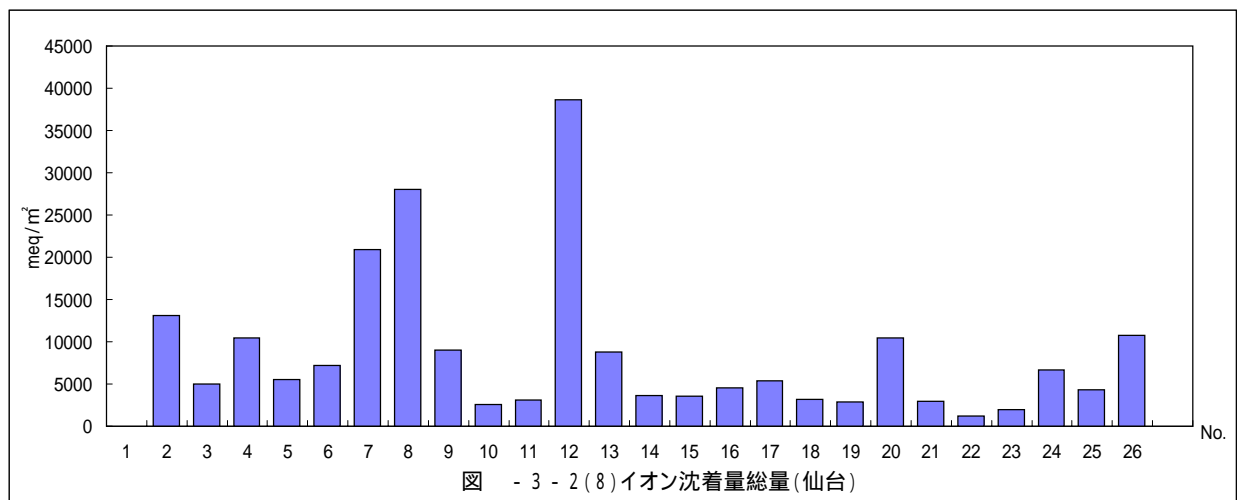


図 - 3 - 2 (8) イオン沈着量総量(仙台)

表 湖沼水調査

No.	1	2
採水地点	鏡ヶ池	鏡ヶ池
採取水深	表層	表層
採取年月日	H19.8.27	H19.11.2
採水時刻	11:30	11:30
天候	曇り	曇り
降水状況	×××	××
気温( )	19.0	2.4
水温( )	20.7	7.5
色相	薄黄色	薄黄色
臭気	なし	なし
濁り	殆どなし	少々あり
透視度	>50	>50
pH(現地)	5.30	4.83
pH(実験室)	5.73	5.82
EC(mS/m)(現地)	0.76	1.06
EC(mS/m)(実験室)	0.78	1.04
アルカリ度(meq/l)	0.016	0.016
COD(mg/l)	11.8	10.7
Cl <sup>-</sup> (mg/l)	1.09	1.78
NH <sub>4</sub> <sup>+</sup> (mg/l)	<0.05	<0.05
NO <sub>2</sub> <sup>-</sup> (mg/l)	<0.01	<0.01
NO <sub>3</sub> <sup>-</sup> (mg/l)	<0.01	<0.01
PO <sub>4</sub> <sup>3-</sup> (mg/l)	0.020	<0.01
Na <sup>+</sup> (mg/l)	0.58	0.80
K <sup>+</sup> (mg/l)	0.34	0.42
Ca <sup>2+</sup> (mg/l)	0.43	0.53
Mg <sup>2+</sup> (mg/l)	0.16	0.18
SO <sub>4</sub> <sup>2-</sup> (mg/l)	0.41	0.48

(注) 降水状況は、左から順に試料採取の前々日、前日、当日の降水の有( )、無(×)を示す。

