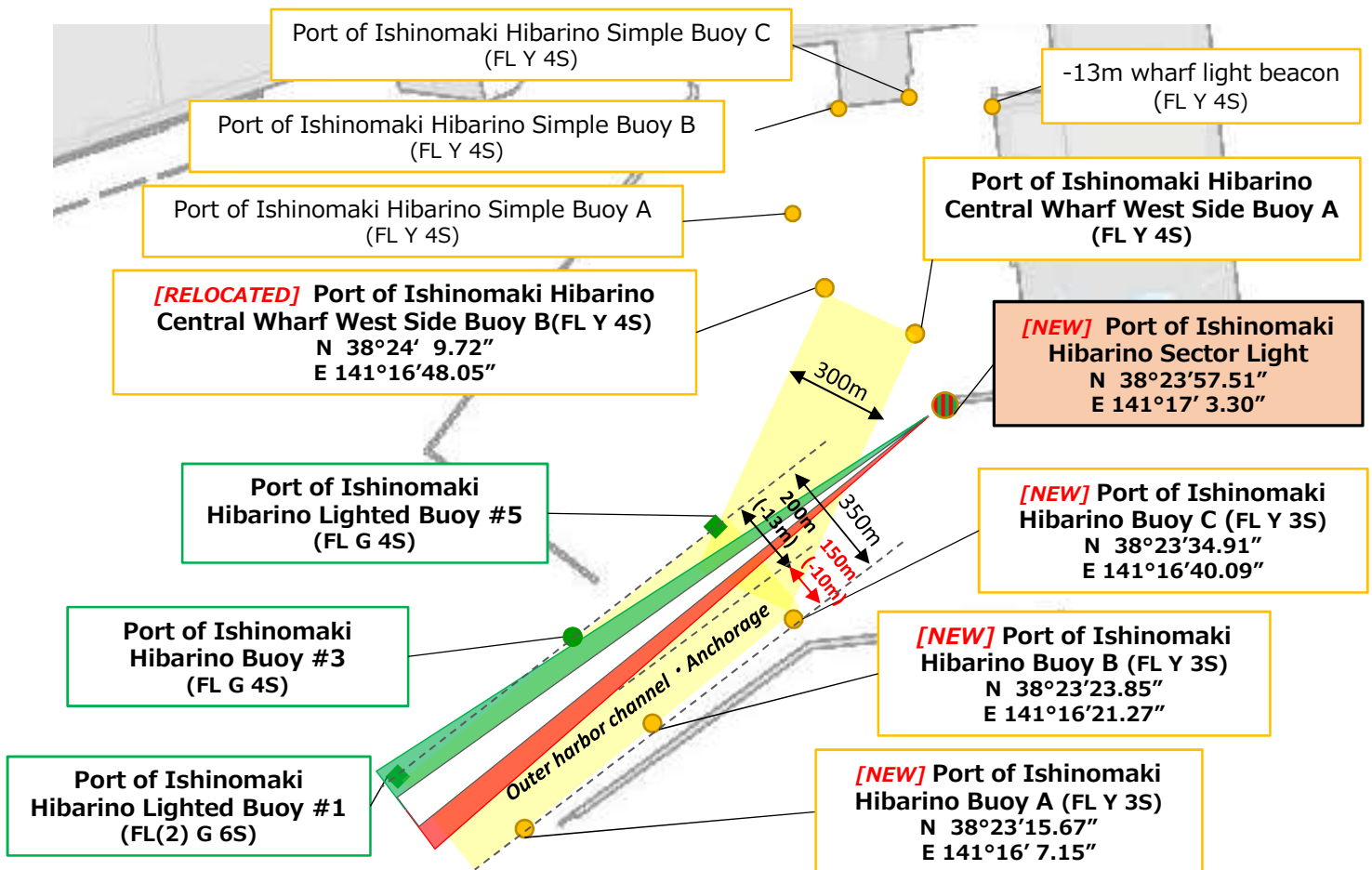


To everyone using the Port of Ishinomaki.

## Port of Ishinomaki

The locations of outer harbor sea marks are changing!

To account for the docking of large passenger ships, the Port of Ishinomaki will be expanding its outer harbor channels. As a result, the locations of sea marks are changing, so please pay attention when navigating. The extended area will be 10m deep; for large cargo ships with deep drafts, please operate safely and keep the following points in mind.



1. Please use the following as sea marks when entering or departing the harbor.

- Buoy (anchorage mark) [light: yellow, blinks once every 3 seconds] - indicates water depth of 10m
- Lighted buoy (port hand mark) [light: green] - indicates water depth of 13m
- Aid to navigation (sector light) - used as an aid to navigation for ships with deep drafts, such as large cargo ships, etc. Sector light turns on one hour before reaching the pier. *\*For ships requiring aids to navigation, please apply through the shipping agency when coordinating berthing.*

2. For outer harbor channels and anchorage areas, please abide by the following rules when navigating.

- Ships weighing 500 gross tonnage or over must make arrangements beforehand to avoid close contact with other ships.
- Large cargo ships with deep drafts must enter and depart the harbor using the port hand marks.
- The aforementioned ships must follow the path projected by the sector light when entering the harbor.

**[White light: middle of navigable waters; Green light: port edge of navigable waters; Red light: starboard edge of navigable waters]**



Ishinomaki Ports and Harbors Development Office, Miyagi Prefectural Government

TEL: +81-225-95-6272 (Japanese only) / FAX: +81-225-95-6273 / E-mail(Office):iskowns@pref.miyagi.lg.jp