

表3 - 1 ( 1 ) 湿性沈着物分析結果

( 丸森 )

| サンプ<br>ル<br>No. | 採取開始 |    |    |      | 採取終了 |    |    |      | 試料量<br>ml | 分取率<br>% | 降水量<br>mm | pH   | E C<br>mS/m | S04--<br>μmol/l | NO3-<br>μmol/l | Cl-<br>μmol/l | NH4+<br>μmol/l | Na+<br>μmol/l | K+<br>μmol/l | Ca++<br>μmol/l | Mg++<br>μmol/l | nss-S04--<br>μmol/l | nss-Ca++<br>μmol/l |
|-----------------|------|----|----|------|------|----|----|------|-----------|----------|-----------|------|-------------|-----------------|----------------|---------------|----------------|---------------|--------------|----------------|----------------|---------------------|--------------------|
|                 | 年    | 月  | 日  | 時刻   | 年    | 月  | 日  | 時刻   |           |          |           |      |             |                 |                |               |                |               |              |                |                |                     |                    |
| 1               | 2008 | 4  | 2  | 1050 | 2008 | 4  | 15 | 1020 | 901.2     | 73.6     | 39.0      | 4.59 | 3.29        | 34.0            | 25.9           | 87.5          | 30.6           | 75.2          | 2.3          | 11.9           | 11.7           | 29.5                | 10.3               |
| 2               | 2008 | 4  | 15 | 1020 | 2008 | 4  | 30 | 1020 | 6,234.2   | 73.6     | 269.5     | 4.95 | 1.31        | 15.3            | 5.8            | 24.3          | 21.9           | 21.1          | 1.2          | 1.7            | 2.7            | 14.0                | 1.2                |
| 3               | 2008 | 4  | 30 | 1020 | 2008 | 5  | 13 | 1045 | 208.3     | 78.0     | 8.5       | 4.71 | 4.42        | 38.4            | 25.8           | 155.1         | 46.1           | 127.5         | 2.9          | 11.0           | 22.5           | 30.7                | 8.2                |
| 4               | 2008 | 5  | 13 | 1045 | 2008 | 5  | 27 | 1020 | 2,343.7   | 72.4     | 103.0     | 4.76 | 1.43        | 11.5            | 7.9            | 31.5          | 10.2           | 27.0          | 0.7          | 2.1            | 4.0            | 9.9                 | 1.5                |
| 5               | 2008 | 5  | 27 | 1020 | 2008 | 6  | 10 | 1020 | 1,564.9   | 73.3     | 68.0      | 4.33 | 4.50        | 34.5            | 19.1           | 140.7         | 17.6           | 118.8         | 2.6          | 4.9            | 15.0           | 27.4                | 2.3                |
| 6               | 2008 | 6  | 10 | 1020 | 2008 | 6  | 24 | 1015 | 595.9     | 73.0     | 26.0      | 4.94 | 1.02        | 8.7             | 11.7           | 11.3          | 17.6           | 7.3           | 1.0          | 2.5            | 2.2            | 8.3                 | 2.3                |
| 7               | 2008 | 6  | 24 | 1015 | 2008 | 7  | 8  | 1030 | 1,469.2   | 84.3     | 55.5      | 4.79 | 1.18        | 10.8            | 14.5           | 5.9           | 20.6           | 3.8           | 0.7          | 1.5            | 1.5            | 10.6                | 1.4                |
| 8               | 2008 | 7  | 8  | 1030 | 2008 | 7  | 22 | 1030 | 556.6     | 70.9     | 25.0      | 4.55 | 1.99        | 18.7            | 25.3           | 11.4          | 37.5           | 2.3           | 0.5          | 4.2            | 3.4            | 18.6                | 4.1                |
| 9               | 2008 | 7  | 22 | 1030 | 2008 | 8  | 5  | 1030 | 1,585.2   | 71.1     | 71.0      | 4.64 | 1.53        | 15.1            | 14.5           | 7.0           | 22.1           | 3.6           | 0.5          | 1.7            | 1.8            | 14.9                | 1.6                |
| 10              | 2008 | 8  | 5  | 1030 | 2008 | 8  | 19 | 1100 | 1,892.1   | 70.4     | 85.5      | 4.68 | 1.27        | 11.2            | 8.9            | 8.3           | 11.0           | 6.6           | 0.9          | 2.9            | 1.5            | 10.8                | 2.8                |
| 11              | 2008 | 8  | 19 | 1100 | 2008 | 9  | 2  | 1040 | 3,342.0   | 224.0    | 47.5      | 4.70 | 1.61        | 14.9            | 0.2            | 41.0          | 1.3            | 34.5          | 0.8          | 6.9            | 3.8            | 12.8                | 6.1                |
| 12              | 2008 | 9  | 2  | 1040 | 2008 | 9  | 16 | 1055 | 665.7     | 73.1     | 29.0      | 4.89 | 1.13        | 11.4            | 13.6           | 17.9          | 16.6           | 9.7           | 0.4          | 2.5            | 3.7            | 10.8                | 2.3                |
| 13              | 2008 | 9  | 16 | 1055 | 2008 | 9  | 30 | 1030 | 964.6     | 72.2     | 42.5      | 4.47 | 1.90        | 16.6            | 18.9           | 12.8          | 5.6            | 7.5           | 0.5          | 2.5            | 3.3            | 16.1                | 2.3                |
| 14              | 2008 | 9  | 30 | 1030 | 2008 | 10 | 14 | 1035 | 1,603.2   | 73.4     | 69.5      | 4.71 | 1.27        | 9.8             | 11.0           | 16.3          | 5.6            | 12.6          | 0.2          | 1.9            | 2.6            | 9.0                 | 1.6                |
| 15              | 2008 | 10 | 14 | 1035 | 2008 | 10 | 28 | 1040 | 996.1     | 72.9     | 43.5      | 4.78 | 2.26        | 16.7            | 10.4           | 90.4          | 9.9            | 77.3          | 2.1          | 3.5            | 10.2           | 12.1                | 1.8                |
| 16              | 2008 | 10 | 28 | 1040 | 2008 | 11 | 11 | 1034 | 110.5     | 78.2     | 4.5       | 4.78 | 2.07        | 11.6            | 17.9           | 51.8          | 23.0           | 37.4          | 1.4          | 5.3            | 10.4           | 9.4                 | 4.5                |
| 17              | 2008 | 11 | 11 | 1034 | 2008 | 11 | 28 | 1040 | 792.2     | 46.7     | 54.0      | 4.89 | 1.09        | 8.2             | 11.5           | 12.8          | 11.5           | 8.7           | 1.2          | 1.7            | 2.8            | 7.7                 | 1.5                |
| 18              | 2008 | 11 | 28 | 1040 | 2008 | 12 | 9  | 1050 | 976.1     | 138.1    | 22.5      | 4.55 | 1.74        | 16.0            | 17.1           | 14.5          | 12.7           | 7.7           | 0.7          | 1.4            | 1.9            | 15.5                | 1.2                |
| 19              | 2008 | 12 | 9  | 1050 | 2008 | 12 | 24 | 1035 | 767.2     | 72.9     | 33.5      | 4.68 | 1.72        | 14.0            | 19.8           | 26.0          | 18.5           | 18.9          | 1.0          | 2.9            | 4.2            | 12.9                | 2.5                |
| 20              | 2008 | 12 | 24 | 1035 | 2009 | 1  | 6  | 1030 | 299.5     | 76.3     | 12.5      | 4.48 | 6.08        | 19.7            | 33.2           | 293.3         | 16.7           | 241.5         | 5.3          | 9.6            | 29.5           | 5.2                 | 4.3                |
| 21              | 2009 | 1  | 6  | 1030 | 2009 | 1  | 20 | 1030 | 629.4     | 75.6     | 26.5      | 4.86 | 1.12        | 10.3            | 7.7            | 16.1          | 9.3            | 10.0          | 0.4          | 1.7            | 2.5            | 9.7                 | 1.5                |
| 22              | 2009 | 1  | 20 | 1030 | 2009 | 2  | 3  | 1040 | 2,336.0   | 73.6     | 101.0     | 4.66 | 1.46        | 10.4            | 15.1           | 11.9          | 14.2           | 8.9           | 0.8          | 1.3            | 1.4            | 9.9                 | 1.1                |
| 23              | 2009 | 2  | 3  | 1040 | 2009 | 2  | 17 | 1040 | 70.3      | 74.6     | 3.0       | 4.60 | 2.65        | 21.3            | 32.0           | 50.4          | 22.9           | 27.8          | 1.8          | 11.7           | 11.1           | 19.6                | 11.1               |
| 24              | 2009 | 2  | 17 | 1040 | 2009 | 3  | 3  | 1035 | 849.2     | 74.1     | 36.5      | 4.99 | 1.39        | 13.4            | 10.7           | 37.7          | 9.1            | 28.5          | 0.9          | 7.1            | 4.9            | 11.7                | 6.5                |
| 25              | 2009 | 3  | 3  | 1035 | 2009 | 3  | 17 | 1035 | 362.9     | 67.9     | 17.0      | 4.95 | 1.36        | 12.6            | 13.0           | 25.9          | 10.6           | 19.1          | 0.7          | 5.5            | 4.5            | 11.5                | 5.1                |
| 26              | 2009 | 3  | 17 | 1035 | 2009 | 3  | 31 | 1255 | 130.6     | 75.6     | 5.5       | 4.73 | 3.83        | 33.1            | 33.5           | 123.5         | 33.6           | 101.3         | 2.8          | 13.3           | 16.6           | 27.0                | 11.1               |
| 総量又は平均値         |      |    |    |      |      |    |    |      | 32,246.8  | 79.0     | 1299.5    | 4.71 | 1.72        | 15.1            | 12.0           | 34.1          | 15.9           | 27.7          | 1.1          | 3.1            | 4.4            | 13.4                | 2.5                |
| 最高値             |      |    |    |      |      |    |    |      | 6,234.2   | 224.0    | 269.5     | 4.99 | 6.08        | 38.4            | 33.5           | 293.3         | 46.1           | 241.5         | 5.3          | 13.3           | 29.5           | 30.7                | 11.1               |
| 最低値             |      |    |    |      |      |    |    |      | 70.3      | 46.7     | 3.0       | 4.33 | 1.02        | 8.2             | 0.2            | 5.9           | 1.3            | 2.3           | 0.2          | 1.3            | 1.4            | 5.2                 | 1.1                |

表3-1(2) 湿性沈着物計算結果(当量濃度)

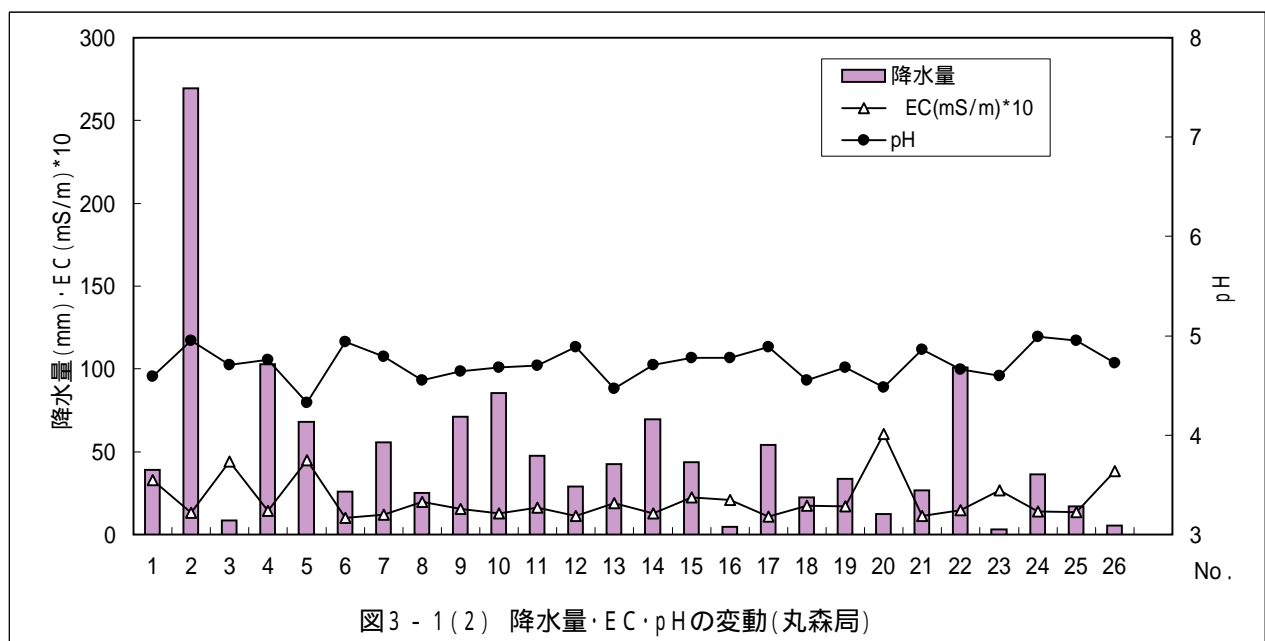
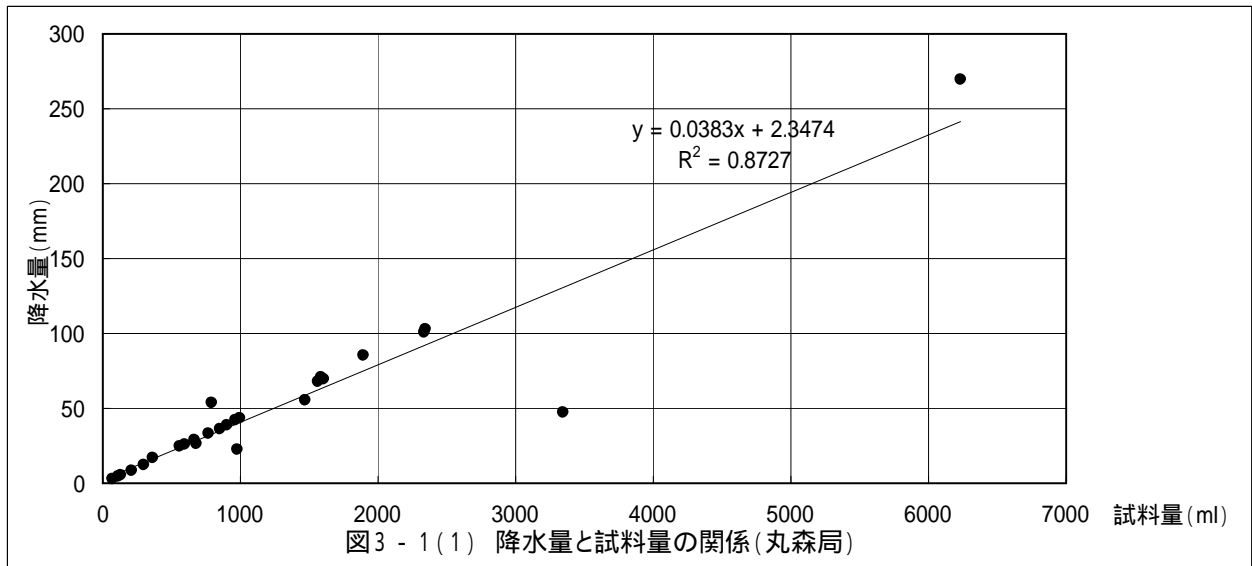
(丸森)

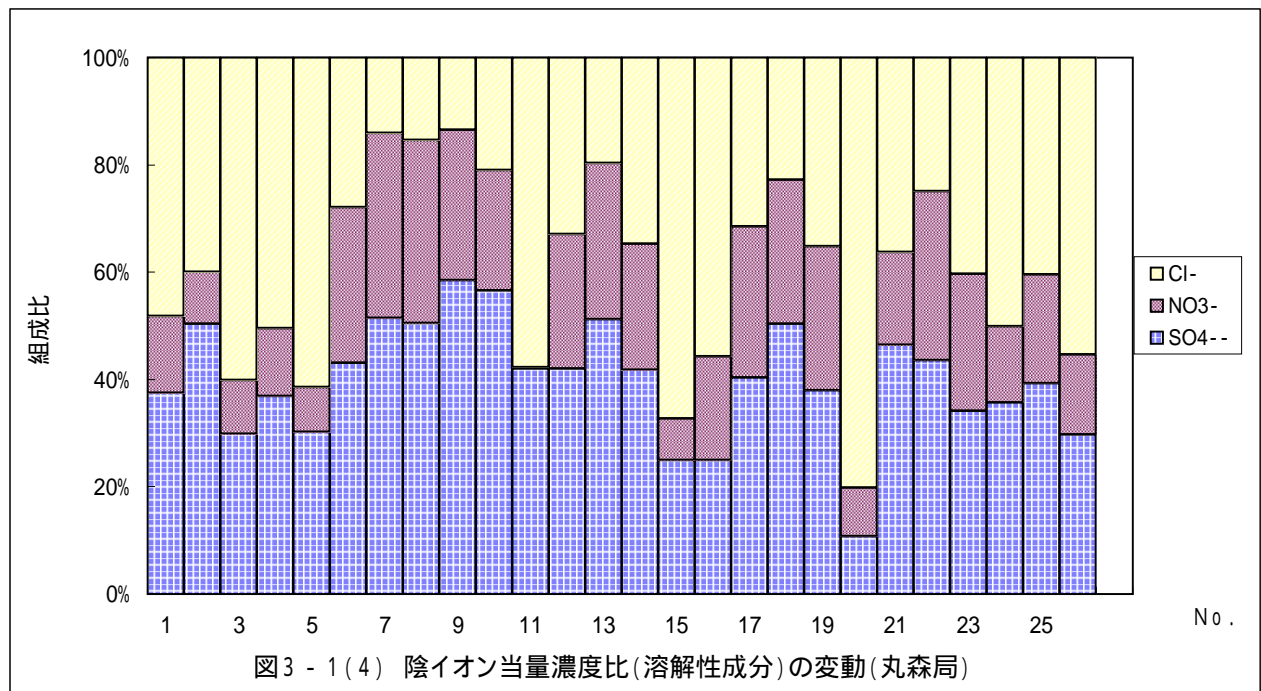
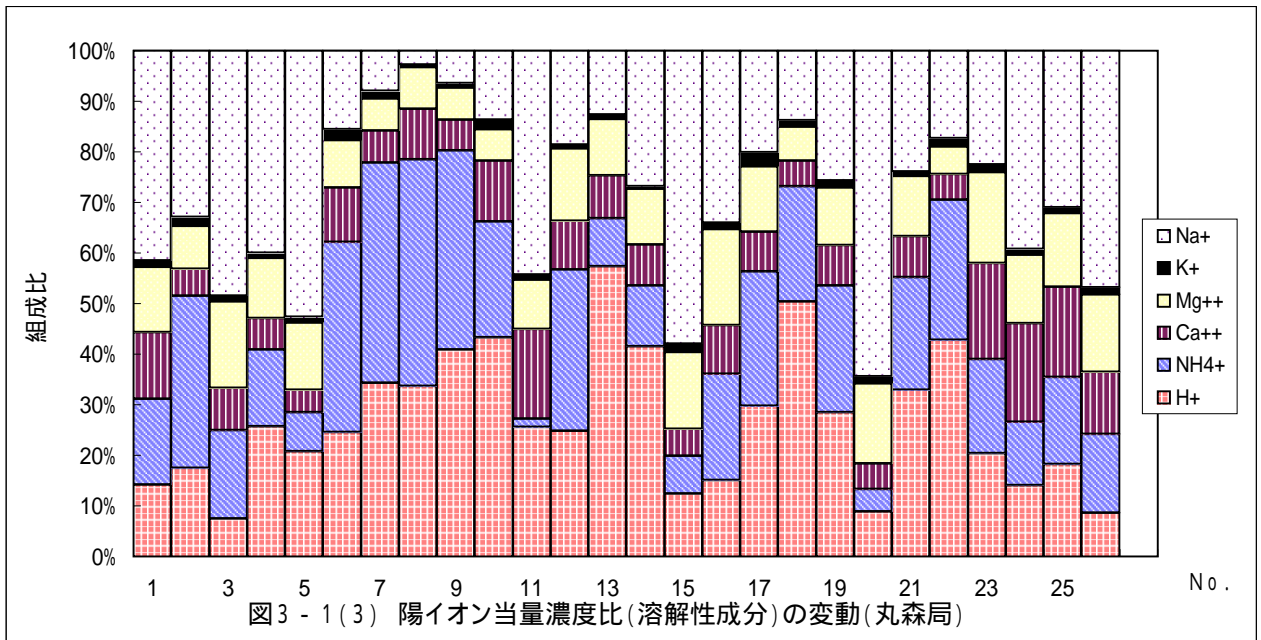
| サンプ<br>ル<br>No. | H+    | SO4-- | NO3- | Cl-   | NH4+ | Na+   | K+  | Ca++ | Mg++ | Anion | Cation | Total | 基準<br>R1 | R1   | cal<br>mS/m | mes<br>mS/m | 基準<br>R2 | R2   | nss-SO4--<br>μeq/l | nss-Ca++<br>μeq/l |
|-----------------|-------|-------|------|-------|------|-------|-----|------|------|-------|--------|-------|----------|------|-------------|-------------|----------|------|--------------------|-------------------|
| 1               | 25.70 | 68.0  | 25.9 | 87.5  | 30.6 | 75.2  | 2.3 | 23.8 | 23.4 | 181.4 | 181.0  | 362.4 | 8        | -0.1 | 3.18        | 3.29        | 9        | -1.7 | 59.0               | 20.5              |
| 2               | 11.22 | 30.6  | 5.8  | 24.3  | 21.9 | 21.1  | 1.2 | 3.4  | 5.4  | 60.7  | 64.2   | 124.9 | 8        | 2.8  | 1.19        | 1.31        | 13       | -4.9 | 28.1               | 2.5               |
| 3               | 19.50 | 76.8  | 25.8 | 155.1 | 46.1 | 127.5 | 2.9 | 22.0 | 45.0 | 257.7 | 263.0  | 520.7 | 8        | 1.0  | 4.03        | 4.42        | 9        | -4.6 | 61.5               | 16.4              |
| 4               | 17.38 | 23.0  | 7.9  | 31.5  | 10.2 | 27.0  | 0.7 | 4.2  | 8.0  | 62.4  | 67.5   | 129.9 | 8        | 3.9  | 1.37        | 1.43        | 13       | -2.1 | 19.8               | 3.0               |
| 5               | 46.77 | 69.0  | 19.1 | 140.7 | 17.6 | 118.8 | 2.6 | 9.8  | 30.0 | 228.8 | 225.6  | 454.4 | 8        | -0.7 | 4.36        | 4.50        | 9        | -1.6 | 54.7               | 4.6               |
| 6               | 11.48 | 17.4  | 11.7 | 11.3  | 17.6 | 7.3   | 1.0 | 5.0  | 4.4  | 40.4  | 46.8   | 87.2  | 15       | 7.3  | 0.94        | 1.02        | 13       | -4.2 | 16.5               | 4.7               |
| 7               | 16.22 | 21.6  | 14.5 | 5.9   | 20.6 | 3.8   | 0.7 | 3.0  | 3.0  | 42.0  | 47.3   | 89.3  | 15       | 6.0  | 1.10        | 1.18        | 13       | -3.6 | 21.1               | 2.8               |
| 8               | 28.18 | 37.4  | 25.3 | 11.4  | 37.5 | 2.3   | 0.5 | 8.4  | 6.8  | 74.1  | 83.7   | 157.8 | 8        | 6.1  | 1.93        | 1.99        | 13       | -1.5 | 37.1               | 8.3               |
| 9               | 22.91 | 30.2  | 14.5 | 7.0   | 22.1 | 3.6   | 0.5 | 3.4  | 3.6  | 51.7  | 56.1   | 107.8 | 8        | 4.1  | 1.42        | 1.53        | 13       | -3.6 | 29.8               | 3.2               |
| 10              | 20.89 | 22.4  | 8.9  | 8.3   | 11.0 | 6.6   | 0.9 | 5.8  | 3.0  | 39.6  | 48.2   | 87.8  | 15       | 9.8  | 1.21        | 1.27        | 13       | -2.5 | 21.6               | 5.5               |
| 11              | 19.95 | 29.8  | 0.2  | 41.0  | 1.3  | 34.5  | 0.8 | 13.8 | 7.6  | 71.0  | 78.0   | 149.0 | 8        | 4.7  | 1.56        | 1.61        | 13       | -1.5 | 25.7               | 12.3              |
| 12              | 12.88 | 22.8  | 13.6 | 17.9  | 16.6 | 9.7   | 0.4 | 5.0  | 7.4  | 54.3  | 52.0   | 106.3 | 8        | -2.2 | 1.11        | 1.13        | 13       | -0.9 | 21.6               | 4.6               |
| 13              | 33.88 | 33.2  | 18.9 | 12.8  | 5.6  | 7.5   | 0.5 | 5.0  | 6.6  | 64.9  | 59.1   | 124.0 | 8        | -4.7 | 1.83        | 1.90        | 13       | -1.9 | 32.3               | 4.7               |
| 14              | 19.50 | 19.6  | 11.0 | 16.3  | 5.6  | 12.6  | 0.2 | 3.8  | 5.2  | 46.9  | 46.9   | 93.8  | 15       | 0.0  | 1.20        | 1.27        | 13       | -2.9 | 18.1               | 3.2               |
| 15              | 16.60 | 33.4  | 10.4 | 90.4  | 9.9  | 77.3  | 2.1 | 7.0  | 20.4 | 134.2 | 133.3  | 267.5 | 8        | -0.3 | 2.24        | 2.26        | 13       | -0.5 | 24.1               | 3.6               |
| 16              | 16.60 | 23.2  | 17.9 | 51.8  | 23.0 | 37.4  | 1.4 | 10.6 | 20.8 | 92.9  | 109.8  | 202.7 | 8        | 8.3  | 1.83        | 2.07        | 13       | -6.1 | 18.7               | 9.0               |
| 17              | 12.88 | 16.4  | 11.5 | 12.8  | 11.5 | 8.7   | 1.2 | 3.4  | 5.6  | 40.7  | 43.3   | 84.0  | 15       | 3.1  | 0.95        | 1.09        | 13       | -6.9 | 15.4               | 3.0               |
| 18              | 28.18 | 32.0  | 17.1 | 14.5  | 12.7 | 7.7   | 0.7 | 2.8  | 3.8  | 63.6  | 55.9   | 119.5 | 8        | -6.5 | 1.65        | 1.74        | 13       | -2.7 | 31.1               | 2.5               |
| 19              | 20.89 | 28.0  | 19.8 | 26.0  | 18.5 | 18.9  | 1.0 | 5.8  | 8.4  | 73.8  | 73.5   | 147.3 | 8        | -0.2 | 1.61        | 1.72        | 13       | -3.2 | 25.7               | 5.0               |
| 20              | 33.11 | 39.4  | 33.2 | 293.3 | 16.7 | 241.5 | 5.3 | 19.2 | 59.0 | 365.9 | 374.8  | 740.7 | 8        | 1.2  | 5.75        | 6.08        | 9        | -2.8 | 10.4               | 8.6               |
| 21              | 13.80 | 20.6  | 7.7  | 16.1  | 9.3  | 10.0  | 0.4 | 3.4  | 5.0  | 44.4  | 41.9   | 86.3  | 15       | -2.9 | 0.99        | 1.12        | 13       | -6.0 | 19.4               | 3.0               |
| 22              | 21.88 | 20.8  | 15.1 | 11.9  | 14.2 | 8.9   | 0.8 | 2.6  | 2.8  | 47.8  | 51.2   | 99.0  | 15       | 3.4  | 1.32        | 1.46        | 13       | -5.2 | 19.7               | 2.2               |
| 23              | 25.12 | 42.6  | 32.0 | 50.4  | 22.9 | 27.8  | 1.8 | 23.4 | 22.2 | 125.0 | 123.2  | 248.2 | 8        | -0.7 | 2.41        | 2.65        | 13       | -4.7 | 39.3               | 22.2              |
| 24              | 10.23 | 26.8  | 10.7 | 37.7  | 9.1  | 28.5  | 0.9 | 14.2 | 9.8  | 75.2  | 72.7   | 147.9 | 8        | -1.7 | 1.29        | 1.39        | 13       | -3.7 | 23.4               | 13.0              |
| 25              | 11.22 | 25.2  | 13.0 | 25.9  | 10.6 | 19.1  | 0.7 | 11.0 | 9.0  | 64.1  | 61.6   | 125.7 | 8        | -2.0 | 1.18        | 1.36        | 13       | -7.2 | 22.9               | 10.2              |
| 26              | 18.62 | 66.2  | 33.5 | 123.5 | 33.6 | 101.3 | 2.8 | 26.6 | 33.2 | 223.2 | 216.1  | 439.3 | 8        | -1.6 | 3.47        | 3.83        | 9        | -4.9 | 54.0               | 22.2              |
| 平均値             | 19.36 | 30.2  | 12.0 | 34.1  | 15.9 | 27.7  | 1.1 | 6.1  | 8.7  | 76.4  | 78.9   | 155.2 | 8        | 1.6  | 1.61        | 1.72        | 13       | -3.1 | 26.9               | 4.9               |
| 最高値             | 46.77 | 76.8  | 33.5 | 293.3 | 46.1 | 241.5 | 5.3 | 26.6 | 59.0 | 365.9 | 374.8  | 740.7 | 15       | 9.8  | 5.75        | 6.08        | 13       | -0.5 | 61.5               | 22.2              |
| 最低値             | 10.23 | 16.4  | 0.2  | 5.9   | 1.3  | 2.3   | 0.2 | 2.6  | 2.8  | 39.6  | 41.9   | 84.0  | 8        | -6.5 | 0.94        | 1.02        | 9        | -7.2 | 10.4               | 2.2               |

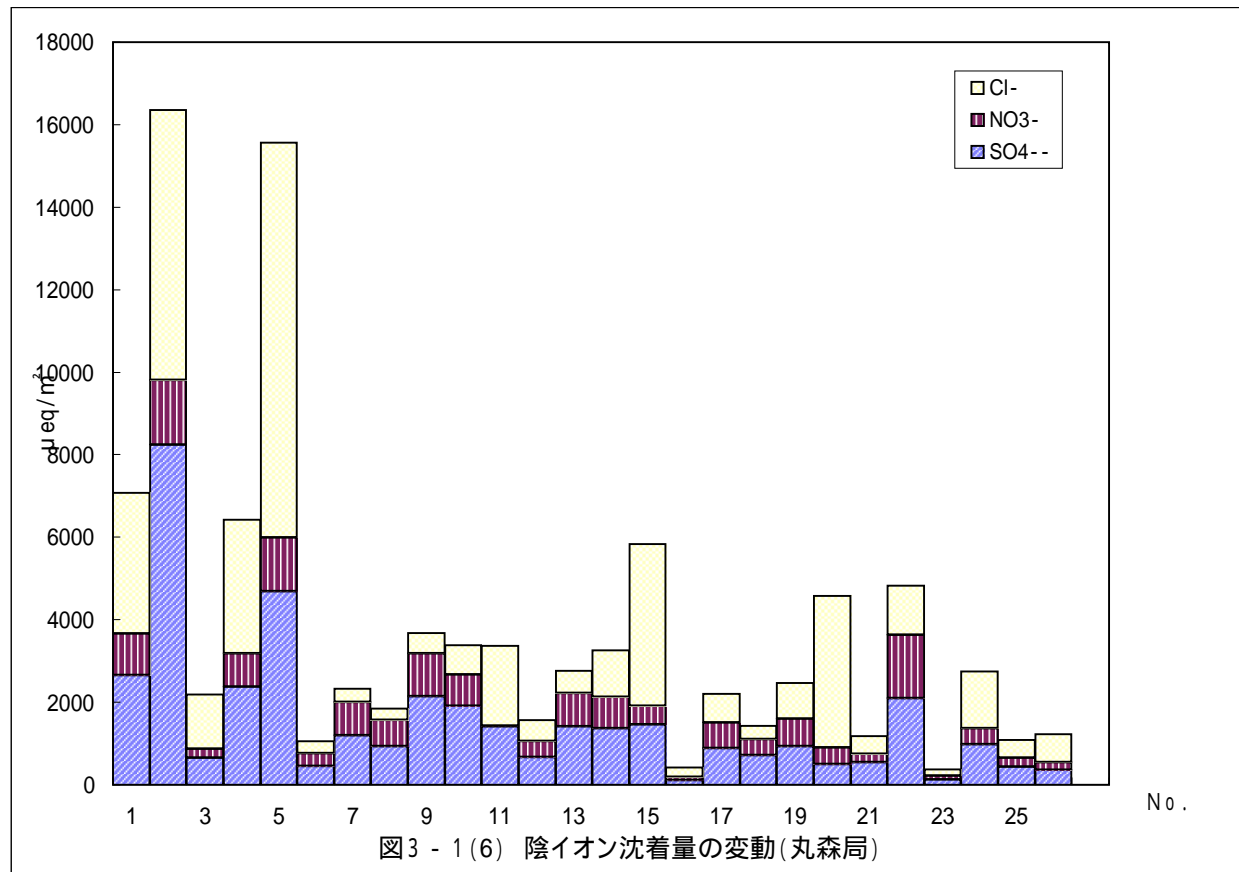
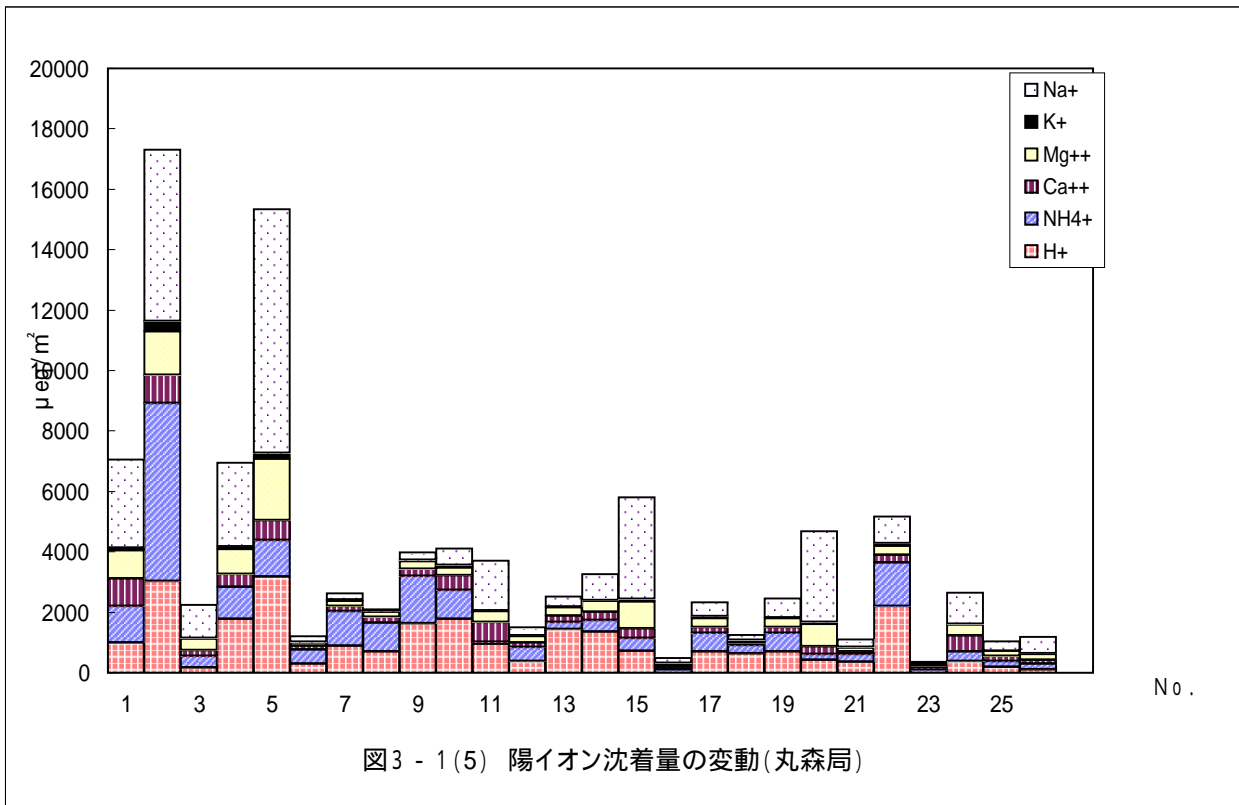
表3 - 1 ( 3 ) 湿性沈着計算結果 ( 沈着量 )

( 丸森 )

| サンプル<br>No. | H+<br>μ eq/m <sup>2</sup> | SO4--<br>μ eq/m <sup>2</sup> | NO3-<br>μ eq/m <sup>2</sup> | Cl-<br>μ eq/m <sup>2</sup> | NH4+<br>μ eq/m <sup>2</sup> | Na+<br>μ eq/m <sup>2</sup> | K+<br>μ eq/m <sup>2</sup> | Ca++<br>μ eq/m <sup>2</sup> | Mg++<br>μ eq/m <sup>2</sup> | Anion<br>μ eq/m <sup>2</sup> | Cation<br>μ eq/m <sup>2</sup> | Total<br>μ eq/m <sup>2</sup> | *降水量<br>mS/m*mm | nss-SO4--<br>μ eq/m <sup>2</sup> | nss-Ca++<br>μ eq/m <sup>2</sup> |
|-------------|---------------------------|------------------------------|-----------------------------|----------------------------|-----------------------------|----------------------------|---------------------------|-----------------------------|-----------------------------|------------------------------|-------------------------------|------------------------------|-----------------|----------------------------------|---------------------------------|
| 1           | 1,002                     | 2,652                        | 1,010                       | 3,413                      | 1,193                       | 2,933                      | 90                        | 928                         | 913                         | 7,075                        | 7,059                         | 14,134                       | 128             | 2,299                            | 800                             |
| 2           | 3,024                     | 8,247                        | 1,563                       | 6,549                      | 5,902                       | 5,686                      | 323                       | 916                         | 1,455                       | 16,359                       | 17,307                        | 33,666                       | 353             | 7,563                            | 668                             |
| 3           | 166                       | 653                          | 219                         | 1,318                      | 392                         | 1,084                      | 25                        | 187                         | 383                         | 2,190                        | 2,235                         | 4,426                        | 38              | 522                              | 140                             |
| 4           | 1,790                     | 2,369                        | 814                         | 3,245                      | 1,051                       | 2,781                      | 72                        | 433                         | 824                         | 6,427                        | 6,950                         | 13,377                       | 147             | 2,035                            | 311                             |
| 5           | 3,181                     | 4,692                        | 1,299                       | 9,568                      | 1,197                       | 8,078                      | 177                       | 666                         | 2,040                       | 15,558                       | 15,339                        | 30,897                       | 306             | 3,720                            | 313                             |
| 6           | 299                       | 452                          | 304                         | 294                        | 458                         | 190                        | 26                        | 130                         | 114                         | 1,050                        | 1,216                         | 2,267                        | 27              | 430                              | 122                             |
| 7           | 900                       | 1,199                        | 805                         | 327                        | 1,143                       | 211                        | 39                        | 167                         | 167                         | 2,331                        | 2,626                         | 4,957                        | 65              | 1,173                            | 157                             |
| 8           | 705                       | 935                          | 633                         | 285                        | 938                         | 58                         | 13                        | 210                         | 170                         | 1,853                        | 2,092                         | 3,945                        | 50              | 928                              | 207                             |
| 9           | 1,627                     | 2,144                        | 1,030                       | 497                        | 1,569                       | 256                        | 36                        | 241                         | 256                         | 3,671                        | 3,984                         | 7,654                        | 109             | 2,113                            | 230                             |
| 10          | 1,786                     | 1,915                        | 761                         | 710                        | 941                         | 564                        | 77                        | 496                         | 257                         | 3,386                        | 4,120                         | 7,506                        | 109             | 1,847                            | 471                             |
| 11          | 948                       | 1,416                        | 10                          | 1,948                      | 62                          | 1,639                      | 38                        | 656                         | 361                         | 3,373                        | 3,703                         | 7,075                        | 76              | 1,218                            | 584                             |
| 12          | 374                       | 661                          | 394                         | 519                        | 481                         | 281                        | 12                        | 145                         | 215                         | 1,575                        | 1,507                         | 3,082                        | 33              | 627                              | 133                             |
| 13          | 1,440                     | 1,411                        | 803                         | 544                        | 238                         | 319                        | 21                        | 213                         | 281                         | 2,758                        | 2,511                         | 5,269                        | 81              | 1,373                            | 199                             |
| 14          | 1,355                     | 1,362                        | 765                         | 1,133                      | 389                         | 876                        | 14                        | 264                         | 361                         | 3,260                        | 3,259                         | 6,519                        | 88              | 1,257                            | 226                             |
| 15          | 722                       | 1,453                        | 452                         | 3,932                      | 431                         | 3,363                      | 91                        | 305                         | 887                         | 5,838                        | 5,798                         | 11,636                       | 98              | 1,048                            | 158                             |
| 16          | 75                        | 104                          | 81                          | 233                        | 104                         | 168                        | 6                         | 48                          | 94                          | 418                          | 494                           | 912                          | 9               | 84                               | 40                              |
| 17          | 696                       | 886                          | 621                         | 691                        | 621                         | 470                        | 65                        | 184                         | 302                         | 2,198                        | 2,337                         | 4,535                        | 59              | 829                              | 163                             |
| 18          | 634                       | 720                          | 385                         | 326                        | 286                         | 173                        | 16                        | 63                          | 86                          | 1,431                        | 1,257                         | 2,688                        | 39              | 699                              | 55                              |
| 19          | 700                       | 938                          | 663                         | 871                        | 620                         | 633                        | 34                        | 194                         | 281                         | 2,472                        | 2,462                         | 4,934                        | 58              | 862                              | 167                             |
| 20          | 414                       | 493                          | 415                         | 3,666                      | 209                         | 3,019                      | 66                        | 240                         | 738                         | 4,574                        | 4,685                         | 9,259                        | 76              | 129                              | 108                             |
| 21          | 366                       | 546                          | 204                         | 427                        | 246                         | 265                        | 11                        | 90                          | 133                         | 1,177                        | 1,110                         | 2,287                        | 30              | 514                              | 79                              |
| 22          | 2,210                     | 2,101                        | 1,525                       | 1,202                      | 1,434                       | 899                        | 81                        | 263                         | 283                         | 4,828                        | 5,169                         | 9,997                        | 147             | 1,993                            | 223                             |
| 23          | 75                        | 128                          | 96                          | 151                        | 69                          | 83                         | 5                         | 70                          | 67                          | 375                          | 370                           | 745                          | 8               | 118                              | 67                              |
| 24          | 374                       | 978                          | 391                         | 1,376                      | 332                         | 1,040                      | 33                        | 518                         | 358                         | 2,745                        | 2,655                         | 5,400                        | 51              | 853                              | 473                             |
| 25          | 191                       | 428                          | 221                         | 440                        | 180                         | 325                        | 12                        | 187                         | 153                         | 1,090                        | 1,048                         | 2,137                        | 23              | 389                              | 173                             |
| 26          | 102                       | 364                          | 184                         | 679                        | 185                         | 557                        | 15                        | 146                         | 183                         | 1,228                        | 1,189                         | 2,416                        | 21              | 297                              | 122                             |
| 総量          | 25,153                    | 39,247                       | 15,647                      | 44,344                     | 20,669                      | 35,950                     | 1,396                     | 7,959                       | 11,358                      | 99,237                       | 102,485                       | 201,722                      | 2,229           | 34,923                           | 6,388                           |







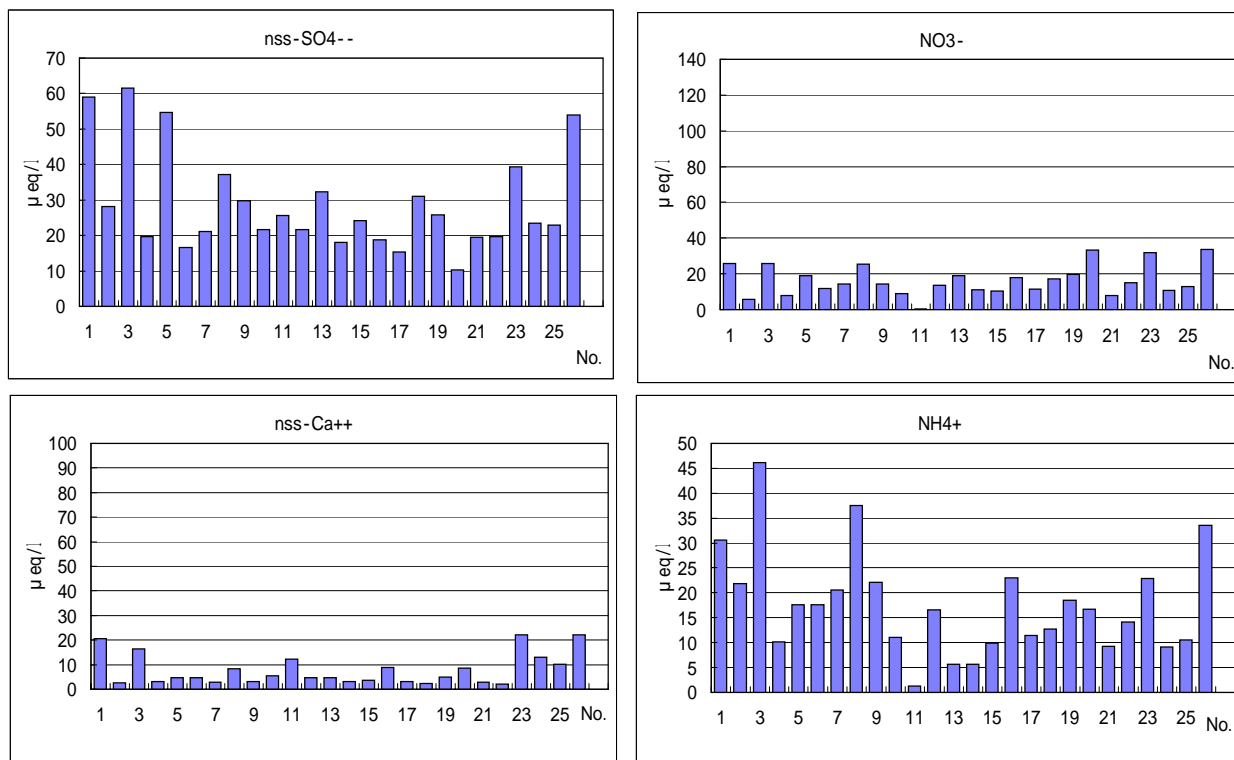


図3 - 1(7) pH因子成分の当量濃度(溶解性成分)(丸森局)

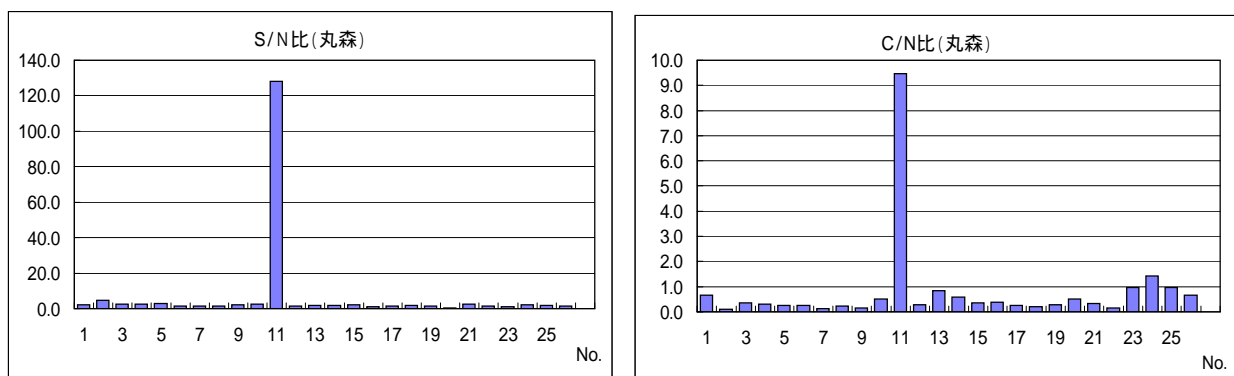


図3 - 1(8) S/N比・C/N比(溶解性成分)(丸森局)

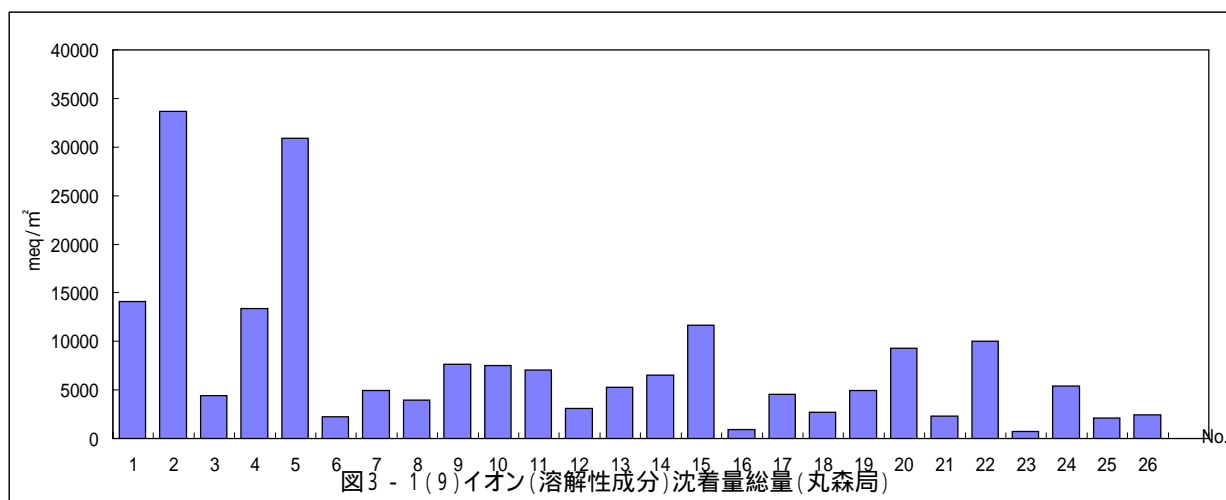


図3 - 1(9)イオン(溶解性成分)沈着量総量(丸森局)

表3 - 2 ( 1 ) 湿性沈着物分析結果

( 仙台 )

| サンプル<br>No. | 採取開始<br>年 月 日 | 採取終了<br>年 月 日 | 試料量<br>ml | 降水量<br>mm | pH   | E C<br>mS/m | SO4--<br>μmol/l | NO3-<br>μmol/l | Cl-<br>μmol/l | NH4+<br>μmol/l | Na+<br>μmol/l | K+<br>μmol/l | Ca++<br>μmol/l | Mg++<br>μmol/l | nss-SO4--<br>μmol/l | nss-Ca++<br>μmol/l |
|-------------|---------------|---------------|-----------|-----------|------|-------------|-----------------|----------------|---------------|----------------|---------------|--------------|----------------|----------------|---------------------|--------------------|
| 1           | 2008 4 2      | 2008 4 15     | 946       | 30.1      | 4.61 | 2.46        | 25.3            | 22.3           | 30.4          | 34.0           | 33.5          | 1.7          | 7.1            | 4.7            | 23.3                | 6.4                |
| 2           | 2008 4 15     | 2008 4 30     | 2,898     | 92.3      | 4.96 | 1.58        | 18.0            | 14.9           | 22.0          | 27.2           | 20.0          | 1.5          | 3.5            | 2.8            | 16.8                | 3.1                |
| 3           | 2008 4 30     | 2008 5 13     | 258       | 8.2       | 4.07 | 9.54        | 93.5            | 103.1          | 251.1         | 74.9           | 232.2         | 10.3         | 28.5           | 30.8           | 79.5                | 23.4               |
| 4           | 2008 5 13     | 2008 5 27     | 2,969     | 94.6      | 4.62 | 2.24        | 18.5            | 14.2           | 55.3          | 16.5           | 48.9          | 1.3          | 3.4            | 5.9            | 15.6                | 2.3                |
| 5           | 2008 5 27     | 2008 6 10     | 2,577     | 82.1      | 4.50 | 2.72        | 24.1            | 15.6           | 61.7          | 18.0           | 53.5          | 1.5          | 3.6            | 6.6            | 20.9                | 2.4                |
| 6           | 2008 6 10     | 2008 6 24     | 169       | 5.4       | 5.29 | 1.74        | 21.8            | 34.1           | 20.3          | 74.4           | 15.1          | 6.0          | 3.0            | 1.6            | 20.9                | 2.7                |
| 7           | 2008 6 24     | 2008 7 8      | 1,478     | 47.1      | 4.70 | 1.47        | 13.5            | 22.3           | 6.6           | 28.2           | 6.0           | 1.3          | 2.2            | 1.1            | 13.1                | 2.1                |
| 8           | 2008 7 8      | 2008 7 22     | 1,064     | 33.9      | 4.32 | 3.02        | 32.2            | 45.7           | 19.3          | 51.0           | 23.0          | 6.3          | 5.7            | 2.0            | 30.8                | 5.2                |
| 9           | 2008 7 22     | 2008 8 5      | 1,514     | 48.2      | 4.48 | 2.26        | 23.4            | 25.3           | 7.3           | 37.8           | 5.8           | 1.2          | 3.0            | 1.2            | 23.1                | 2.9                |
| 10          | 2008 8 5      | 2008 8 19     | 2,318     | 73.8      | 4.69 | 1.65        | 18.2            | 20.2           | 9.2           | 36.3           | 8.4           | 1.7          | 3.4            | 1.4            | 17.7                | 3.2                |
| 11          | 2008 8 19     | 2008 9 2      | 10,368    | 330.2     | 4.85 | 0.99        | 9.3             | 5.6            | 15.7          | 6.5            | 13.7          | 0.5          | 1.2            | 1.6            | 8.5                 | 0.9                |
| 12          | 2008 9 2      | 2008 9 16     | 2,213     | 70.5      | 4.92 | 0.92        | 10.9            | 12.8           | 5.8           | 18.8           | 4.0           | 0.4          | 1.5            | 0.8            | 10.7                | 1.4                |
| 13          | 2008 9 16     | 2008 9 30     | 848       | 27.0      | 4.47 | 2.23        | 18.4            | 31.7           | 13.7          | 27.0           | 11.7          | 0.6          | 1.9            | 1.6            | 17.7                | 1.6                |
| 14          | 2008 9 30     | 2008 10 14    | 2,611     | 83.2      | 4.56 | 1.76        | 14.5            | 14.3           | 27.7          | 12.5           | 22.1          | 0.6          | 2.1            | 2.8            | 13.2                | 1.6                |
| 15          | 2008 10 14    | 2008 10 28    | 2,302     | 73.3      | 4.86 | 1.90        | 15.3            | 7.9            | 70.1          | 13.0           | 61.0          | 1.8          | 2.1            | 6.8            | 11.6                | 0.8                |
| 16          | 2008 10 28    | 2008 11 11    | 0         | 0.0       |      |             |                 |                |               |                |               |              |                |                |                     |                    |
| 17          | 2008 11 11    | 2008 11 25    | 1,037     | 33.0      | 5.38 | 1.27        | 13.0            | 18.1           | 24.0          | 45.8           | 18.1          | 4.0          | 1.6            | 1.8            | 11.9                | 1.2                |
| 18          | 2008 11 25    | 2008 12 9     | 1,229     | 39.1      | 4.62 | 1.51        | 14.5            | 17.8           | 9.0           | 16.8           | 5.4           | 0.6          | 1.6            | 1.1            | 14.2                | 1.5                |
| 19          | 2008 12 9     | 2008 12 24    | 456       | 14.5      | 4.61 | 2.02        | 19.7            | 28.8           | 21.2          | 32.1           | 16.5          | 1.6          | 5.3            | 2.3            | 18.7                | 4.9                |
| 20          | 2008 12 24    | 2009 1 6      | 563.0     | 17.9      | 4.87 | 5.98        | 30.7            | 12.7           | 353.7         | 22.5           | 292.9         | 6.7          | 9.2            | 31.5           | 13.1                | 2.8                |
| 21          | 2009 1 6      | 2009 1 20     | 1,076     | 34.3      | 5.10 | 0.81        | 6.4             | 7.2            | 15.7          | 9.2            | 10.7          | 0.5          | 1.9            | 1.7            | 5.8                 | 1.7                |
| 22          | 2009 1 20     | 2009 2 3      | 1,848.7   | 58.9      | 4.62 | 1.89        | 13.5            | 20.4           | 23.1          | 24.0           | 18.2          | 1.8          | 2.6            | 2.3            | 12.4                | 2.2                |
| 23          | 2009 2 3      | 2009 2 17     | 808       | 25.7      | 5.26 | 0.53        | 4.6             | 5.4            | 8.5           | 5.9            | 7.1           | 0.5          | 2.2            | 0.9            | 4.2                 | 2.0                |
| 24          | 2009 2 17     | 2009 3 3      | 1,308     | 41.6      | 5.01 | 1.97        | 20.0            | 16.1           | 66.7          | 14.8           | 56.2          | 1.7          | 11.2           | 7.0            | 16.6                | 10.0               |
| 25          | 2009 3 3      | 2009 3 17     | 1,200     | 38.2      | 4.98 | 1.14        | 12.6            | 11.7           | 21.4          | 11.2           | 16.9          | 0.7          | 5.5            | 2.4            | 11.6                | 5.1                |
| 26          | 2009 3 17     | 2009 3 31     | 165       | 5.3       | 4.79 | 3.85        | 41.6            | 51.7           | 103.5         | 47.0           | 85.9          | 3.6          | 27.9           | 12.5           | 36.4                | 26.0               |
| 総量又は平均値     |               |               | 44,222    | 1408      | 4.72 | 1.72        | 15.9            | 15.1           | 31.9          | 19.6           | 27.4          | 1.4          | 3.1            | 3.4            | 14.3                | 2.5                |
| 最高値         |               |               |           | 330.2     | 5.38 | 9.54        | 93.5            | 103.1          | 353.7         | 74.9           | 292.9         | 10.3         | 28.5           | 31.5           | 79.5                | 26.0               |
| 最低値         |               |               |           | 0.0       | 4.07 | 0.53        | 4.6             | 5.4            | 5.8           | 5.9            | 4.0           | 0.4          | 1.2            | 0.8            | 4.2                 | 0.8                |



表3-2(2)

湿性沈着物計算結果(当量濃度)

(仙台)

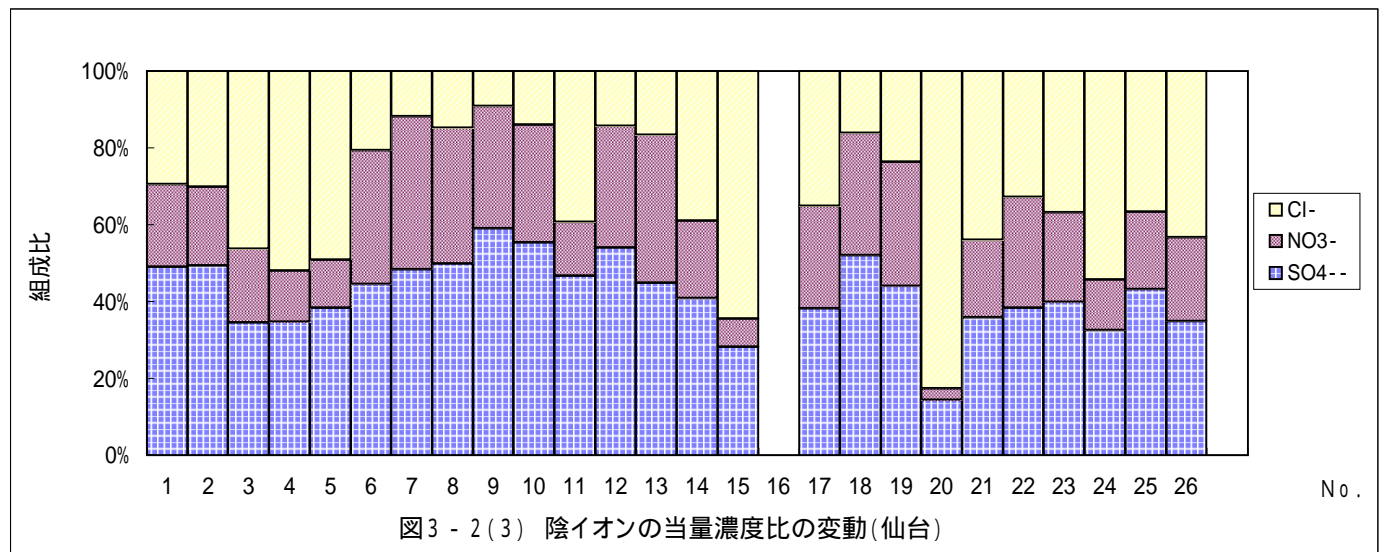
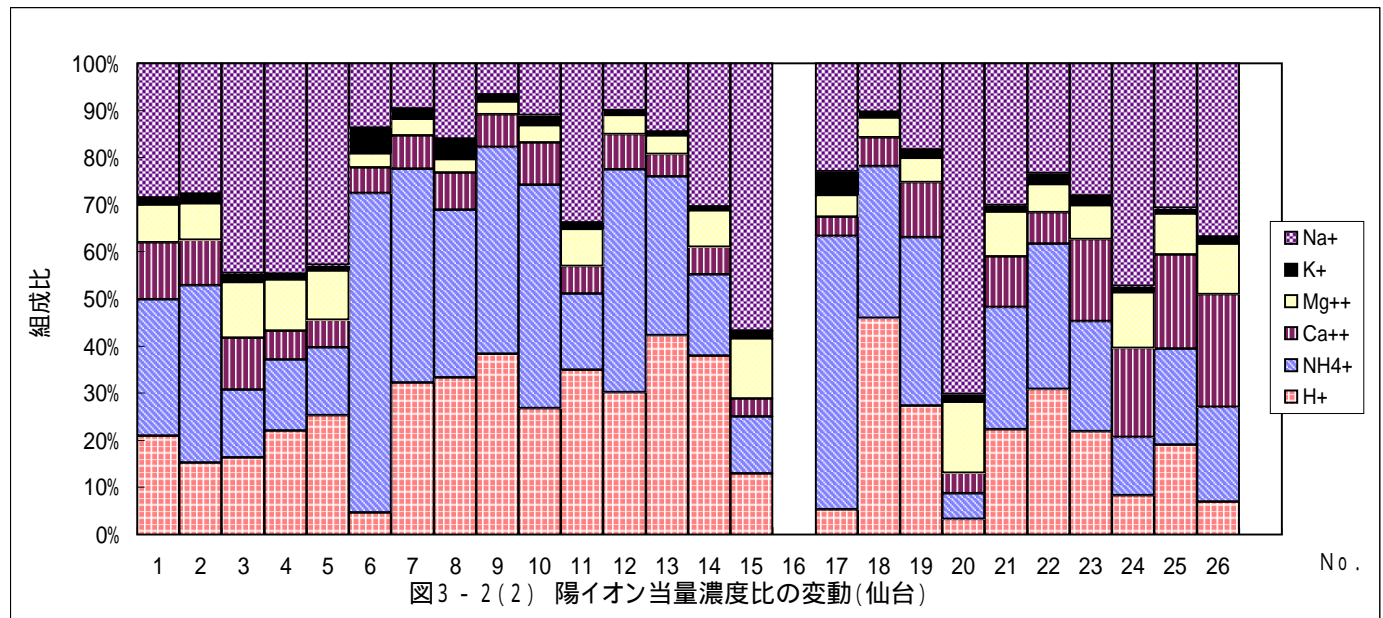
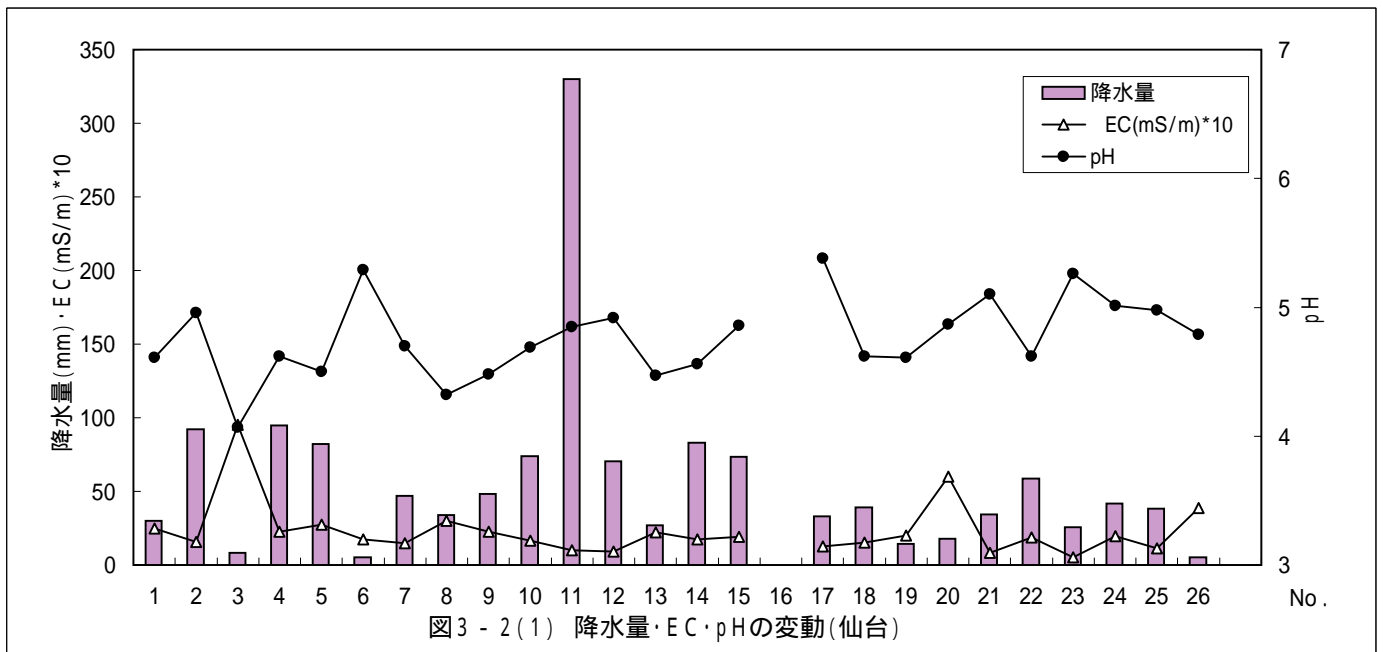
| サンプル<br>No. | H+    | SO4-- | NO3-  | Cl-   | NH4+  | Na+   | K+    | Ca++  | Mg++  | Anion | Cation | Total  | R1   | cal  | mes  | R2     | nss-SO4-- | nss-Ca++ |
|-------------|-------|-------|-------|-------|-------|-------|-------|-------|-------|-------|--------|--------|------|------|------|--------|-----------|----------|
|             | μeq/l | μeq/l | μeq/l | μeq/l | μeq/l | μeq/l | μeq/l | μeq/l | μeq/l | μeq/l | μeq/l  | μeq/l  |      | mS/m | mS/m |        | μeq/l     | μeq/l    |
| 1           | 24.55 | 50.6  | 22.3  | 30.4  | 34.0  | 33.5  | 1.7   | 14.2  | 9.4   | 103.3 | 117.3  | 220.6  | 6.4  | 2.22 | 2.46 | -5.1   | 46.6      | 12.7     |
| 2           | 10.96 | 36.0  | 14.9  | 22.0  | 27.2  | 20.0  | 1.5   | 7.0   | 5.6   | 72.9  | 72.3   | 145.2  | -0.4 | 1.33 | 1.58 | -8.6   | 33.6      | 6.1      |
| 3           | 85.11 | 187.0 | 103.1 | 251.1 | 74.9  | 232.2 | 10.3  | 57.0  | 61.6  | 541.2 | 521.1  | 1062.3 | -1.9 | 9.58 | 9.54 | 0.2    | 159.1     | 46.9     |
| 4           | 23.99 | 37.0  | 14.2  | 55.3  | 16.5  | 48.9  | 1.3   | 6.8   | 11.8  | 106.5 | 109.3  | 215.8  | 1.3  | 2.14 | 2.24 | -2.3   | 31.1      | 4.7      |
| 5           | 31.62 | 48.2  | 15.6  | 61.7  | 18.0  | 53.5  | 1.5   | 7.2   | 13.2  | 125.5 | 125.0  | 250.5  | -0.2 | 2.60 | 2.72 | -2.3   | 41.8      | 4.9      |
| 6           | 5.13  | 43.6  | 34.1  | 20.3  | 74.4  | 15.1  | 6.0   | 6.0   | 3.2   | 98.0  | 109.8  | 207.8  | 5.7  | 1.65 | 1.74 | -2.8   | 41.8      | 5.3      |
| 7           | 19.95 | 27.0  | 22.3  | 6.6   | 28.2  | 6.0   | 1.3   | 4.4   | 2.2   | 55.9  | 62.1   | 118.0  | 5.2  | 1.41 | 1.47 | -2.1   | 26.3      | 4.1      |
| 8           | 47.86 | 64.4  | 45.7  | 19.3  | 51.0  | 23.0  | 6.3   | 11.4  | 4.0   | 129.4 | 143.6  | 273.0  | 5.2  | 3.29 | 3.02 | 4.3    | 61.6      | 10.4     |
| 9           | 33.11 | 46.8  | 25.3  | 7.3   | 37.8  | 5.8   | 1.2   | 6.0   | 2.4   | 79.4  | 86.3   | 165.7  | 4.2  | 2.13 | 2.26 | -2.9   | 46.1      | 5.7      |
| 10          | 20.42 | 36.4  | 20.2  | 9.2   | 36.3  | 8.4   | 1.7   | 6.8   | 2.8   | 65.8  | 76.4   | 142.2  | 7.5  | 1.60 | 1.65 | -1.6   | 35.4      | 6.4      |
| 11          | 14.13 | 18.6  | 5.6   | 15.7  | 6.5   | 13.7  | 0.5   | 2.4   | 3.2   | 39.9  | 40.4   | 80.3   | 0.7  | 0.95 | 0.99 | -1.8   | 17.0      | 1.8      |
| 12          | 12.02 | 21.8  | 12.8  | 5.8   | 18.8  | 4.0   | 0.4   | 3.0   | 1.6   | 40.4  | 39.8   | 80.2   | -0.7 | 0.92 | 0.92 | -0.1   | 21.3      | 2.8      |
| 13          | 33.88 | 36.8  | 31.7  | 13.7  | 27.0  | 11.7  | 0.6   | 3.8   | 3.2   | 82.2  | 80.2   | 162.4  | -1.2 | 2.11 | 2.23 | -2.7   | 35.4      | 3.3      |
| 14          | 27.54 | 29.0  | 14.3  | 27.7  | 12.5  | 22.1  | 0.6   | 4.2   | 5.6   | 71.0  | 72.5   | 143.5  | 1.1  | 1.77 | 1.76 | 0.3    | 26.3      | 3.2      |
| 15          | 13.80 | 30.6  | 7.9   | 70.1  | 13.0  | 61.0  | 1.8   | 4.2   | 13.6  | 108.6 | 107.4  | 216.0  | -0.6 | 1.83 | 1.90 | -1.9   | 23.3      | 1.5      |
| 16          |       |       |       |       |       |       |       |       |       |       |        |        |      |      |      |        |           |          |
| 17          | 4.17  | 26.0  | 18.1  | 24.0  | 45.8  | 18.1  | 4.0   | 3.2   | 3.6   | 68.1  | 78.9   | 147.0  | 7.3  | 1.16 | 1.27 | -4.5   | 23.8      | 2.4      |
| 18          | 23.99 | 29.0  | 17.8  | 9.0   | 16.8  | 5.4   | 0.6   | 3.2   | 2.2   | 55.8  | 52.2   | 108.0  | -3.3 | 1.45 | 1.51 | -1.9   | 28.4      | 3.0      |
| 19          | 24.55 | 39.4  | 28.8  | 21.2  | 32.1  | 16.5  | 1.6   | 10.6  | 4.6   | 89.4  | 89.9   | 179.3  | 0.3  | 1.96 | 2.02 | -1.5   | 37.4      | 9.9      |
| 20          | 13.49 | 61.4  | 12.7  | 353.7 | 22.5  | 292.9 | 6.7   | 18.4  | 63.0  | 427.8 | 417.0  | 844.8  | -1.3 | 5.88 | 5.98 | -0.8   | 26.2      | 5.6      |
| 21          | 7.94  | 12.8  | 7.2   | 15.7  | 9.2   | 10.7  | 0.5   | 3.8   | 3.4   | 35.7  | 35.5   | 71.2   | -0.2 | 0.72 | 0.81 | -6.1   | 11.5      | 3.3      |
| 22          | 23.99 | 27.0  | 20.4  | 23.1  | 24.0  | 18.2  | 1.8   | 5.2   | 4.6   | 70.5  | 77.8   | 148.3  | 4.9  | 1.71 | 1.89 | -4.9   | 24.8      | 4.4      |
| 23          | 5.50  | 9.2   | 5.4   | 8.5   | 5.9   | 7.1   | 0.5   | 4.4   | 1.8   | 23.1  | 25.2   | 48.3   | 4.3  |      | 0.53 | -100.0 | 8.3       | 4.1      |
| 24          | 9.77  | 40.0  | 16.1  | 66.7  | 14.8  | 56.2  | 1.7   | 22.4  | 14.0  | 122.8 | 118.9  | 241.7  | -1.6 |      | 1.97 | -100.0 | 33.2      | 19.9     |
| 25          | 10.47 | 25.2  | 11.7  | 21.4  | 11.2  | 16.9  | 0.7   | 11.0  | 4.8   | 58.3  | 55.1   | 113.4  | -2.8 |      | 1.14 | -100.0 | 23.2      | 10.3     |
| 26          | 16.22 | 83.2  | 51.7  | 103.5 | 47.0  | 85.9  | 3.6   | 55.8  | 25.0  | 238.4 | 233.5  | 471.9  | -1.0 |      | 3.85 | -100.0 | 72.9      | 52.0     |
| 平均値         | 19.26 | 31.8  | 15.1  | 31.9  | 19.6  | 27.4  | 1.4   | 6.3   | 6.8   | 78.8  | 80.7   | 159.5  | 1.2  | 1.64 | 1.72 | -2.2   | 28.5      | 5.1      |
| 最高値         | 85.11 | 187   | 103.1 | 353.7 | 74.9  | 292.9 | 10.3  | 57    | 63    | 541.2 | 521.1  | 1062.3 | 7.5  | 9.58 | 9.54 | 4.3    | 159.1     | 52.0     |
| 最低値         | 4.17  | 9.2   | 5.4   | 5.8   | 5.9   | 4     | 0.4   | 2.4   | 1.6   | 23.1  | 25.2   | 48.3   | -3.3 | 0.72 | 0.53 | -100   | 8.3       | 1.5      |

表3 - 2 ( 3 )

湿性沈着計算結果 ( 沈着量 )

( 仙台 )

| サンプル<br>No. | H+<br>μeq/m <sup>2</sup> | SO4--<br>μeq/m <sup>2</sup> | NO3-<br>μeq/m <sup>2</sup> | Cl-<br>μeq/m <sup>2</sup> | NH4+<br>μeq/m <sup>2</sup> | Na+<br>μeq/m <sup>2</sup> | K+<br>μeq/m <sup>2</sup> | Ca++<br>μeq/m <sup>2</sup> | Mg++<br>μeq/m <sup>2</sup> | Anion<br>μeq/m <sup>2</sup> | Cation<br>μeq/m <sup>2</sup> | Total<br>μeq/m <sup>2</sup> | *降水量<br>mS/m*mm | nss-SO4--<br>μeq/m <sup>2</sup> | nss-Ca++<br>μeq/m <sup>2</sup> |
|-------------|--------------------------|-----------------------------|----------------------------|---------------------------|----------------------------|---------------------------|--------------------------|----------------------------|----------------------------|-----------------------------|------------------------------|-----------------------------|-----------------|---------------------------------|--------------------------------|
| 1           | 739.9                    | 1,525                       | 672                        | 916                       | 1,025                      | 1,010                     | 51                       | 428                        | 283                        | 3,113                       | 3,537                        | 6,650                       | 74.1            | 1,404                           | 384                            |
| 2           | 1,012.0                  | 3,323                       | 1,375                      | 2,030                     | 2,510                      | 1,846                     | 138                      | 646                        | 517                        | 6,728                       | 6,670                        | 13,398                      | 145.8           | 3,101                           | 565                            |
| 3           | 699.1                    | 1,536                       | 847                        | 2,062                     | 615                        | 1,907                     | 85                       | 468                        | 506                        | 4,445                       | 4,280                        | 8,725                       | 78.4            | 1,307                           | 385                            |
| 4           | 2,268.5                  | 3,499                       | 1,343                      | 5,230                     | 1,560                      | 4,624                     | 123                      | 643                        | 1,116                      | 10,071                      | 10,335                       | 20,406                      | 211.8           | 2,943                           | 441                            |
| 5           | 2,594.8                  | 3,955                       | 1,280                      | 5,063                     | 1,477                      | 4,390                     | 123                      | 591                        | 1,083                      | 10,298                      | 10,259                       | 20,556                      | 223.2           | 3,427                           | 399                            |
| 6           | 27.6                     | 235                         | 184                        | 109                       | 401                        | 81                        | 32                       | 32                         | 17                         | 528                         | 592                          | 1,120                       | 9.4             | 225                             | 29                             |
| 7           | 939.2                    | 1,271                       | 1,050                      | 311                       | 1,327                      | 282                       | 61                       | 207                        | 104                        | 2,631                       | 2,921                        | 5,552                       | 69.2            | 1,237                           | 195                            |
| 8           | 1,621.5                  | 2,182                       | 1,548                      | 654                       | 1,728                      | 779                       | 213                      | 386                        | 136                        | 4,384                       | 4,864                        | 9,247                       | 102.3           | 2,088                           | 352                            |
| 9           | 1,596.6                  | 2,257                       | 1,220                      | 352                       | 1,823                      | 280                       | 58                       | 289                        | 116                        | 3,828                       | 4,162                        | 7,990                       | 109.0           | 2,223                           | 277                            |
| 10          | 1,507.0                  | 2,687                       | 1,491                      | 679                       | 2,679                      | 620                       | 125                      | 502                        | 207                        | 4,857                       | 5,640                        | 10,497                      | 121.8           | 2,612                           | 475                            |
| 11          | 4,664.2                  | 6,142                       | 1,849                      | 5,184                     | 2,146                      | 4,524                     | 165                      | 792                        | 1,057                      | 13,175                      | 13,348                       | 26,523                      | 326.9           | 5,598                           | 595                            |
| 12          | 847.1                    | 1,536                       | 902                        | 409                       | 1,325                      | 282                       | 28                       | 211                        | 113                        | 2,847                       | 2,806                        | 5,653                       | 64.8            | 1,502                           | 199                            |
| 13          | 914.7                    | 993                         | 856                        | 370                       | 729                        | 316                       | 16                       | 103                        | 86                         | 2,219                       | 2,165                        | 4,384                       | 60.2            | 955                             | 89                             |
| 14          | 2,290.6                  | 2,412                       | 1,189                      | 2,304                     | 1,040                      | 1,838                     | 50                       | 349                        | 466                        | 5,905                       | 6,033                        | 11,938                      | 146.4           | 2,191                           | 269                            |
| 15          | 1,012.2                  | 2,244                       | 579                        | 5,140                     | 953                        | 4,473                     | 132                      | 308                        | 997                        | 7,963                       | 7,876                        | 15,839                      | 139.3           | 1,706                           | 113                            |
| 16          |                          |                             |                            |                           |                            |                           |                          |                            |                            |                             |                              |                             |                 |                                 |                                |
| 17          | 137.6                    | 858                         | 597                        | 792                       | 1,512                      | 597                       | 132                      | 106                        | 119                        | 2,248                       | 2,604                        | 4,852                       | 41.9            | 786                             | 80                             |
| 18          | 938.8                    | 1,135                       | 697                        | 352                       | 657                        | 211                       | 23                       | 125                        | 86                         | 2,184                       | 2,042                        | 4,226                       | 59.1            | 1,109                           | 116                            |
| 19          | 356.1                    | 572                         | 418                        | 308                       | 466                        | 239                       | 23                       | 154                        | 67                         | 1,297                       | 1,305                        | 2,602                       | 29.3            | 543                             | 143                            |
| 20          | 241.9                    | 1,101                       | 228                        | 6,342                     | 403                        | 5,252                     | 120                      | 330                        | 1,130                      | 7,670                       | 7,477                        | 15,147                      | 107.2           | 469                             | 100                            |
| 21          | 272.1                    | 438                         | 247                        | 538                       | 315                        | 366                       | 17                       | 130                        | 116                        | 1,223                       | 1,217                        | 2,440                       | 27.7            | 394                             | 114                            |
| 22          | 1,412.3                  | 1,590                       | 1,201                      | 1,360                     | 1,413                      | 1,072                     | 106                      | 306                        | 271                        | 4,151                       | 4,580                        | 8,731                       | 111.3           | 1,461                           | 259                            |
| 23          | 141.4                    | 237                         | 139                        | 219                       | 152                        | 183                       | 13                       | 113                        | 46                         | 594                         | 648                          | 1,242                       | 13.6            | 215                             | 105                            |
| 24          | 407.0                    | 1,666                       | 671                        | 2,778                     | 616                        | 2,341                     | 71                       | 933                        | 583                        | 5,114                       | 4,951                        | 10,065                      | 82.0            | 1,384                           | 831                            |
| 25          | 400.2                    | 963                         | 447                        | 818                       | 428                        | 646                       | 27                       | 420                        | 183                        | 2,228                       | 2,105                        | 4,333                       | 43.6            | 886                             | 392                            |
| 26          | 85.4                     | 438                         | 272                        | 545                       | 247                        | 452                       | 19                       | 294                        | 132                        | 1,255                       | 1,229                        | 2,484                       | 20.3            | 384                             | 274                            |
| 総量          | 27,128                   | 44,793                      | 21,301                     | 44,864                    | 27,549                     | 38,611                    | 1,953                    | 8,868                      | 9,536                      | 110,958                     | 113,644                      | 224,602                     | 2,419           | 40,149                          | 7,180                          |



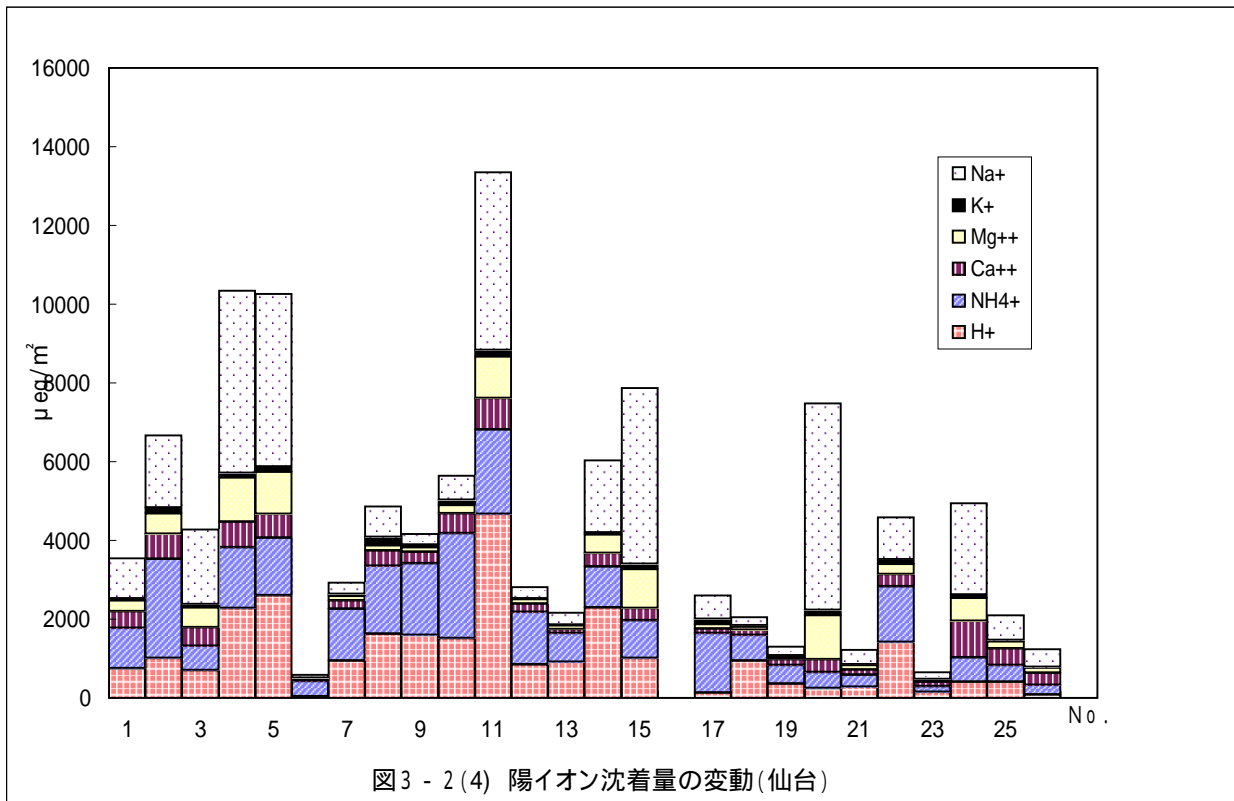


図3 - 2 (4) 陽イオン沈着量の変動(仙台)

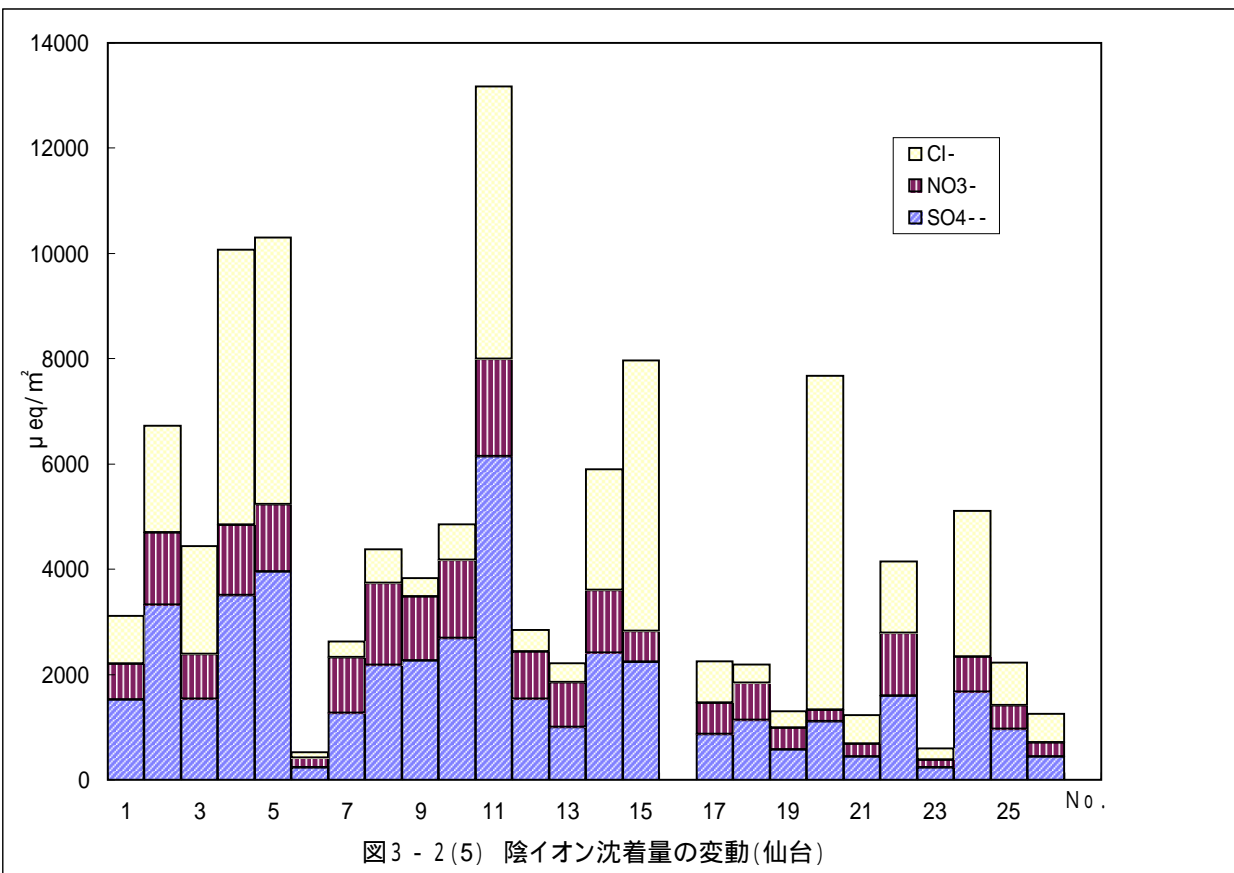


図3 - 2 (5) 陰イオン沈着量の変動(仙台)

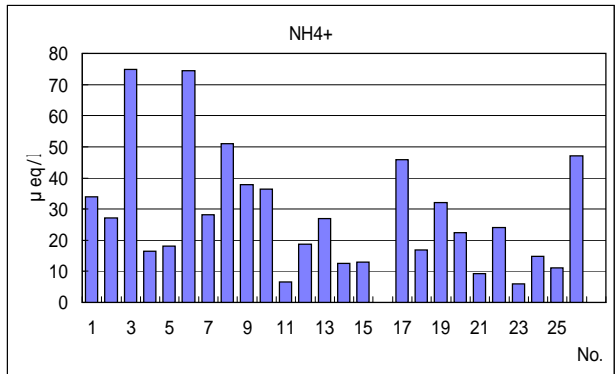
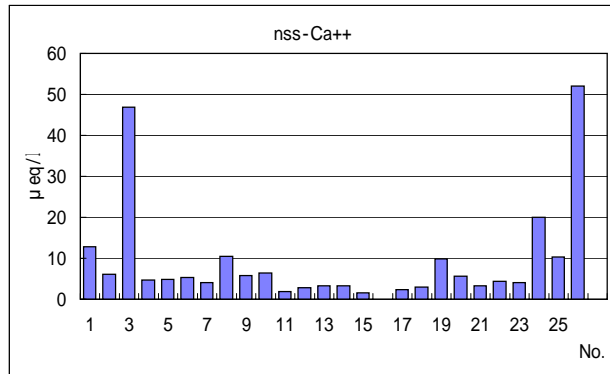
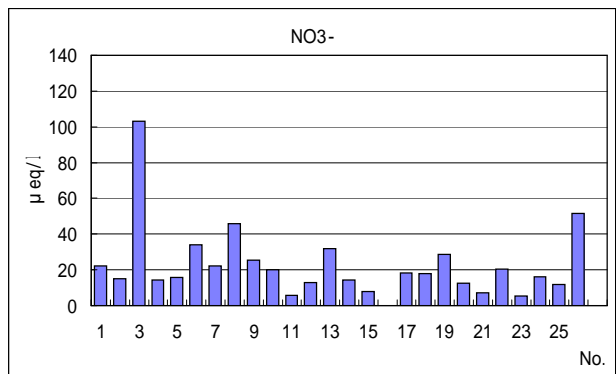
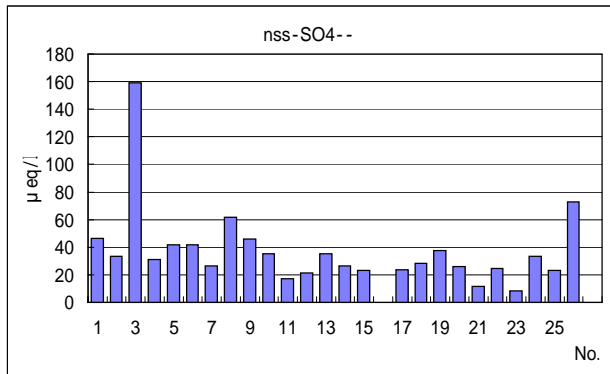


図3 - 2 (6) pH因子成分の当量濃度(仙台)

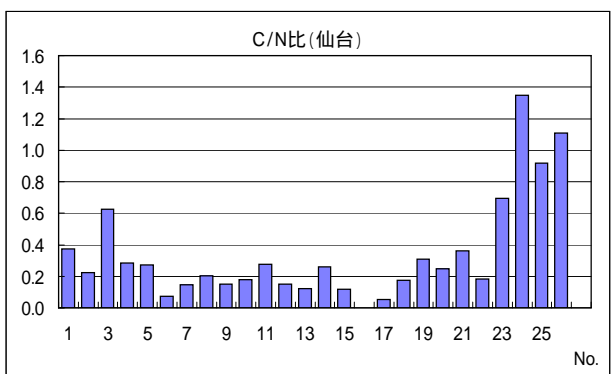
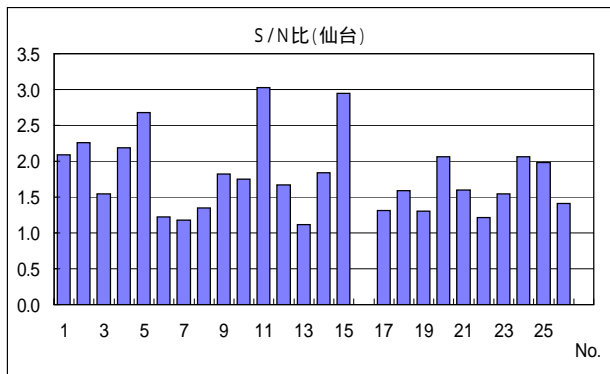


図3 - 2 (7) S / N比・C / N比(仙台)

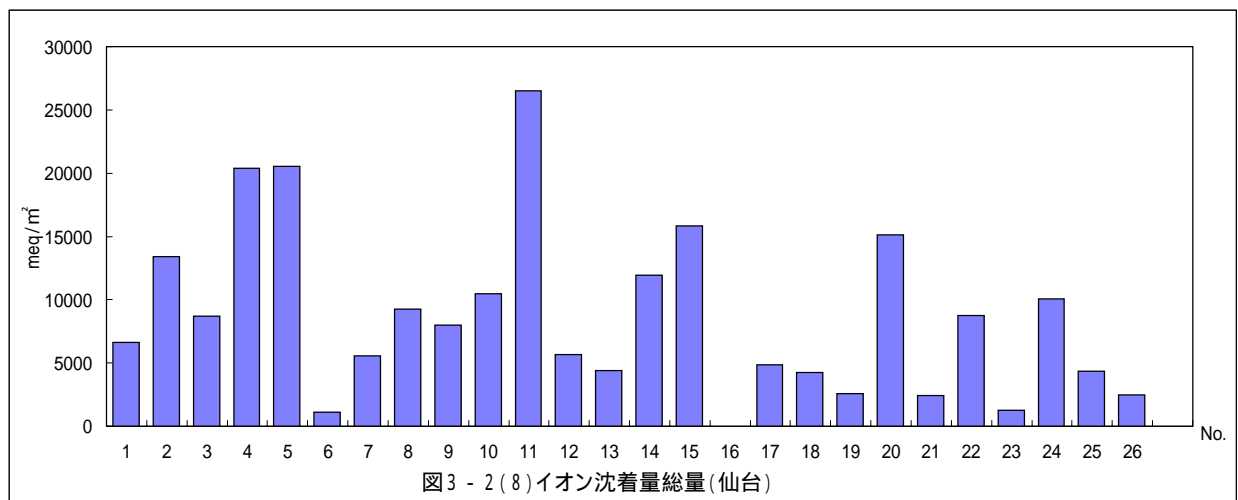


図3 - 2 (8) イオン沈着量総量(仙台)

(様式1)

## 現地調査表(20年9月分)

|                 |                         |       |
|-----------------|-------------------------|-------|
| 採水日時            | 平成20年9月3日               |       |
| 調査開始時刻          | 14:00                   |       |
| 調査終了時刻          | 14:30                   |       |
| 天候              | 曇り                      |       |
| 降雨状況            | 当日                      | ×(なし) |
|                 | 前日                      | (あり)  |
|                 | 前々日                     | ×(なし) |
| 気温( )           | 20.2                    |       |
| 透視度(cm)         | 50以上                    |       |
| 色相              | 薄黄色                     |       |
| 濁り              | 少々あり                    |       |
| 臭気              | 無臭                      |       |
| pH              | 6.93                    |       |
| 電気伝導率<br>(mS/m) | 0.70                    |       |
| 備考              | 水温( ) 21.7<br>水位約20cm増水 |       |

- 1 採水地点の状況が普段と変わっていた場合などは、備考欄にその状況を記載すること。
- 2 現地調査表には、採水地点及び採水状況に関する写真を添付すること。

(古紙利用率100%)

(様式2)

### 水質分析結果表(20年9月分)

| 項目名                                  | 桁数              | 測定結果   | 測定方法           |
|--------------------------------------|-----------------|--------|----------------|
| 採水日及び採水時刻                            | 平成20年9月3日 14:10 |        |                |
| pH                                   | 小数点以下2桁         | 6.90   | JIS K0102 12.1 |
| 電気伝導率(mS/m)                          | 小数点以下2桁         | 0.40   | JIS K0102 13   |
| NH <sub>4</sub> <sup>+</sup> (mg/ )  | 小数点以下2桁         | 0.05未満 | JIS K0102 42.2 |
| Na <sup>+</sup> (mg/ )               | 小数点以下2桁         | 1.27   | JIS K0101 47.1 |
| K <sup>+</sup> (mg/ )                | 小数点以下2桁         | 0.28   | JIS K0101 48.1 |
| Ca <sup>2+</sup> (mg/ )              | 小数点以下2桁         | 1.59   | JIS K0101 49.2 |
| Mg <sup>2+</sup> (mg/ )              | 小数点以下2桁         | 0.54   | JIS K0101 50.2 |
| Cl <sup>-</sup> (mg/ )               | 小数点以下2桁         | 2.27   | JIS K0102 35.3 |
| NO <sub>3</sub> <sup>-</sup> (mg/ )  | 小数点以下2桁         | 0.41   | JIS K0102 43.2 |
| NO <sub>2</sub> <sup>-</sup> (mg/ )  | 小数点以下2桁         | 0.01未満 | JIS K0102 43.1 |
| PO <sub>4</sub> <sup>3-</sup> (mg/ ) | 小数点以下2桁         | 0.01未満 | JIS K0102 46.1 |
| SO <sub>4</sub> <sup>2-</sup> (mg/ ) | 小数点以下2桁         | 2.38   | JIS K0102 41.3 |
| COD(mg/ )                            | 小数点以下2桁         | 12.4   | JIS K0102 17   |
| アルカリ度(meq/ )                         | 小数点以下3桁         | 0.025  | JIS K0101 13.1 |
| 備考                                   |                 |        |                |

(古紙利用率100%)